

# FINAL MAP N<sup>o</sup> 32-07

A DIVISION OF LOT 1 OF MB 2, PAGE 35, SIERRA VIEW ESTATES, LOCATED IN A PORTION OF THE W 1/2, SE 1/4, SEC 28, T5N, R25E, MDB & M, MONOCOUNTY, CALIFORNIA.



SCALE: 1"=100'

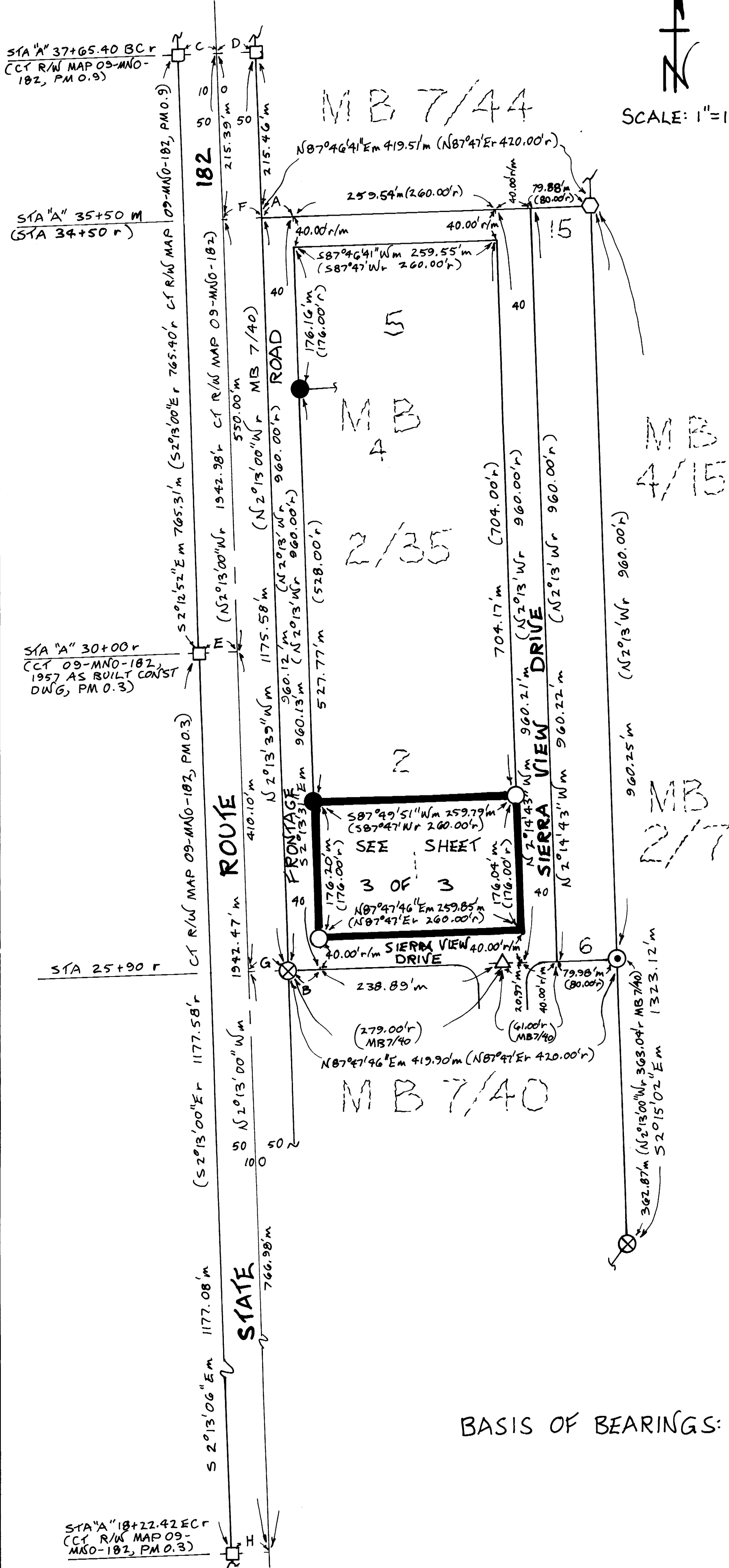
## LEGEND:

- ⊗ FOUND 2" I.D. IRON PIPE & TAG RCE 10467. ACCEPTED PER MB 7/40.
- △ FOUND 3/4" I.D. IRON PIPE & TAG RCE 10467 IN WATER CURB BOX IN CONCRETE VALLEY. ACCEPTED PER MB 7/40.
- ⊙ FOUND BENT 1/2" DIAM REBAR IN LIEU OF 2" I.D. IRON PIPE PER MB 7/40. ACCEPTED AS CORNER PER MB 7/40. RESET WITH 1 1/2" DIAM. ALUM. CAP STAMPED LS 5149 ON 5/8" DIAM. REBAR.
- FOUND BENT 3/8" DIAM ORANGE REBAR ADJACENT TO BRASS TAG STAMPED CE 7522 IN CONC. MONUMENT. ACCEPTED PER MB 2/35. MEASUREMENT TAKEN TO PUNCH MARK IN BRASS TAG.
- FOUND 6"x6" CALTRANS CONC. HIGHWAY MONUMENT
- FOUND 3/8" DIAM ORANGE REBAR KNOWN TO HAVE BEEN COMMONLY SET BY WALTER REID, RCE 7522. ACCEPTED AS CORNER PER MB 2/35.
- SET 1 1/2" DIAM. ALUM. CAP STAMPED LS 5149 ON 5/8" DIAM. REBAR.
- r BASED ON RECORD INFORMATION PER MB 2/35 UNLESS OTHERWISE NOTED.
- m BASED ON FIELD MEASUREMENTS.
- SET 1 1/2" DIAM COPPERWELD MONUMENT STAMPED LS 5149 IN & PAVEMENT.

## TANGENT DATA:

A	N 87° 46' 41" E m	40.09' m
B	N 87° 47' 46" E m	40.06' m
C	S 87° 41' 41" W m	49.87' m
D	S 87° 41' 41" W m	49.87' m
E	N 87° 47' 00" E m	49.90' m
F	S 87° 46' 41" W m	49.91' m
G	N 87° 47' 46" E m	50.09' m
H	N 87° 47' 00" E m	49.86' m

BASIS OF BEARINGS: N 2° 13' 00" W, BETWEEN THE CONCRETE MONUMENTS 50' LEFT OF STA "A" 18+22.42 AND STA "A" 37+65.40 AS SHOWN ON CALTRANS R/W MAP 09-MNO-182, PM 0.3 AND PM 0.9.



T.M. Ltd 10 Page 274