

FOR QUESTIONS, CALL THE
Southern California Office
REGION 86
PHONE: (714) 957-1500
EMAIL: reg86@captiveaire.com

PATENT NUMBERS

EXHAUST HOODS ND-2/BD-2/SND-2 (CANADA) - CA PATENT 2520435 C.

HOOD INFORMATION - JOB#5294505

HOOD NO	TAG	MODEL	MANUFACTURER	LENGTH	MAX COOKING TEMP	TYPE	APPLIANCE DUTY	DESIGN CFM/FT	TOTAL EXH CFM	EXHAUST PLENUM RISER(S)						TOTAL SUPPLY CFM	HOOD CONSTRUCTION	HOOD CONFIG		
										WIDTH	LENG	HEIGHT	DIA	CFM	VEL			SP	END TO END	ROW
1		4824 ND-2	CAPTIVEAIRE	13' 0"	600 DEG	I	HEAVY	262	3400			4"	18"	3400	1924	-1.202'	0	430 SS WHERE EXPOSED	LEFT	ALONE
2		4824 ND-2	CAPTIVEAIRE	11' 2"	600 DEG	I	HEAVY	260	2900			4"	18"	2900	1641	-0.897'	0	430 SS WHERE EXPOSED	RIGHT	ALONE
3		226 MISC ACPSP-ONLY	CAPTIVEAIRE	11' 9"	300 DEG	I	N/A	0	0								2520	430 SS WHERE EXPOSED	ALONE	ALONE
4		226 MISC ACPSP-ONLY	CAPTIVEAIRE	14' 4"	300 DEG	I	N/A	0	0								2520	430 SS WHERE EXPOSED	ALONE	ALONE

HOOD INFORMATION

HOOD NO	TAG	FILTER(S)					LIGHT(S)			UTILITY CABINET(S)					FIRE SYSTEM PIPING	HOOD HANGING WEIGHT	
		TYPE	QTY	HEIGHT	LENGTH	EFFICIENCY @ 7 MICRONS	QTY	TYPE	WIRE GUARD	LOCATION	SIZE	FIRE SYSTEM		ELECTRICAL			SWITCHES
											TYPE	SIZE	MODEL #	QUANTITY			
1		CAPTRATE SOLO FILTER	9	20"	16"	85% SEE FILTER SPEC	7	L55 SERIES E26	NO	WALL MNT	12"x54"x24"	ANSUL R-102	3.0/3.0/3.0	DCV-2111	1 LIGHT 1 FAN	YES	537 LBS
2		CAPTRATE SOLO FILTER	8	20"	16"	85% SEE FILTER SPEC	6	L55 SERIES E26	NO	RIGHT	20"x48"x24"					YES	548 LBS
3							0									NO	162 LBS
4							0									NO	185 LBS

HOOD OPTIONS

HOOD NO	TAG	OPTION
1		LEFT END STANDOFF (FINISHED) 3' WIDE 48" LONG. RISER SENSOR INSTALL 6IN PLEN.
2		RISER SENSOR INSTALL 6IN PLEN.

PERFORATED SUPPLY PLENUM(S)

HOOD NO	TAG	POS	LENGTH	WIDTH	HEIGHT	TYPE	RISER(S)				
							WIDTH	LENG	DIA	CFM	SP
3	Front	141"	10"	6"	AC				8"	236	0.135"
						MUA	10"	28"		1260	0.530"
	Back	141"	12"	6"	MUA		10"	28"		1260	0.530"
						AC			8"	236	0.122"
4	Front	172"	10"	6"	AC				8"	236	0.122"
						MUA	10"	28"		1254	0.497"
	Back	172"	12"	6"	MUA		10"	28"		1254	0.497"
						AC			8"	236	0.122"

WALL-MOUNT UTILITY CABINET

HOOD NO	LOCATION	SIZE	UTILITY CABINET(S)			WEIGHT
			FIRE SYSTEM TYPE	ELECTRICAL SIZE	SWITCHES MODEL # QUANTITY	
1	WALL MNT	12"x54"x24"	ANSUL R-102	3.0/3.0/3.0	DCV-2111 1 LIGHT 1 FAN	305.00 LBS

FIRE SYSTEM INFORMATION - JOB#5294505

FIRE SYSTEM NO	TAG	TYPE	SIZE	FLOW POINTS	INSTALLATION	
					SYSTEM	LOCATION ON HOOD
1		ANSUL R102	3.0/3.0/3.0	29	WALL UTILITY CABINET LEFT	N/A

GAS VALVE(S)

FIRE SYSTEM NO	TAG	TYPE	SIZE	SUPPLIED BY
1		MECHANICAL	2.000	CAPTIVEAIRE SYSTEMS

NOTE: UNLESS OTHERWISE STATED, PANDA RESTAURANT GROUP SHALL PROVIDE ALL EQUIPMENT ON THE FOLLOWING CAPTIVEAIRE SHEETS, INCLUDING: HOODS, FIRE SYTEM, EXHAUST FANS, SUPPLY FAN, BATHROOM FAN AND ELECTRICAL INTERLOCK PACKAGE

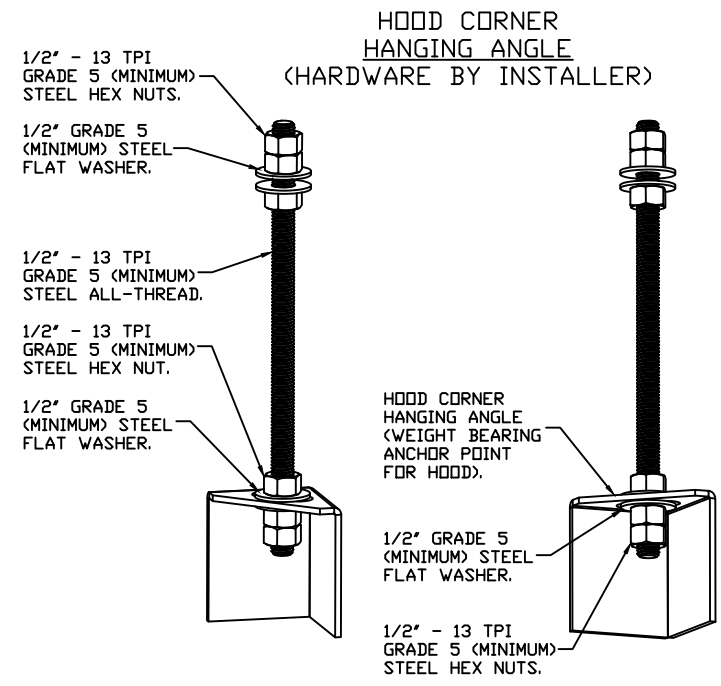
DOUBLE WALL DUCT BY MECHANICAL
PLEASE USE CONTACT BELOW FOR PRICING

ANSUL GAS VALVE:

THE ANSUL GAS VALVE IS PROVIDED BY CAPTIVEAIRE SYSTEMS. CONTACT OUR OFFICE WITH THE VALVE SIZE 3 DAYS IN ADVANCE OF WHEN IT IS NEEDED ON SITE.

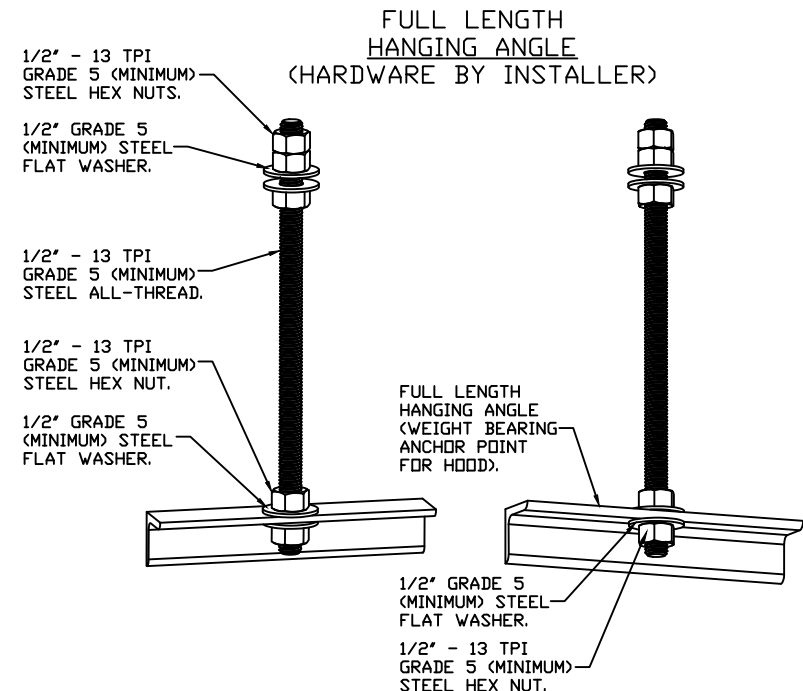
FOR QUESTIONS CALL THE
CAPTIVEAIRE
SOUTHERN CALIFORNIA OFFICE

3002 DOW AVENUE, SUITE 410
TUSTIN, CA 92780
TEL: 714-957-1500 EMAIL: REG86@CAPTIVEAIRE.COM



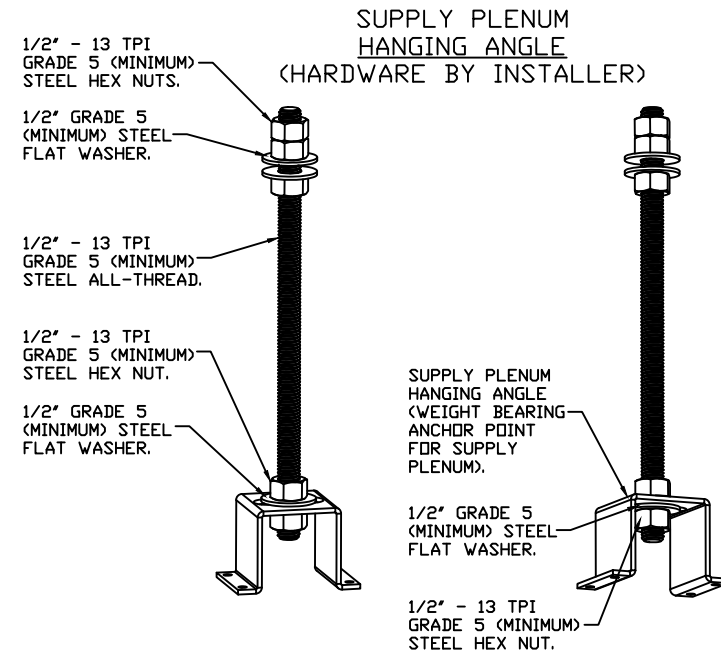
ASSEMBLY INSTRUCTIONS

HANGING ANGLE MUST BE SUPPORTED WITH 1/2" - 13 TPI GRADE 5 (MINIMUM) ALL-THREAD. SANDWICH HANGING ANGLES AND CEILING ANCHOR POINTS WITH 1/2" GRADE 5 (MINIMUM) STEEL FLAT WASHERS AND 1/2" - 13 TPI GRADE 5 (MINIMUM) HEX NUTS AS SHOWN. MUST USE DOUBLED HEX NUT CONFIGURATION BENEATH HOOD HANGING ANGLES AND ABOVE CEILING ANCHORS. MAINTAIN 1/4" OF EXPOSED THREADS BENEATH BOTTOM HEX NUT. TORQUE ALL HEX NUTS TO 57 FT-LBS.



ASSEMBLY INSTRUCTIONS

HANGING ANGLE MUST BE SUPPORTED WITH 1/2" - 13 TPI GRADE 5 (MINIMUM) ALL-THREAD. SANDWICH HANGING ANGLES AND CEILING ANCHOR POINTS WITH 1/2" GRADE 5 (MINIMUM) STEEL FLAT WASHERS AND 1/2" - 13 TPI GRADE 5 (MINIMUM) HEX NUTS AS SHOWN. MUST USE DOUBLED HEX NUT CONFIGURATION ABOVE CEILING ANCHORS. SINGLE HEX NUT BENEATH HANGING ANGLE IS ACCEPTABLE FOR FULL LENGTH HANGING ANGLES. MAINTAIN 1/4" OF EXPOSED THREADS BENEATH BOTTOM HEX NUT. TORQUE ALL HEX NUTS TO 57 FT-LBS.



ASSEMBLY INSTRUCTIONS

HANGING ANGLE MUST BE SUPPORTED WITH 1/2" - 13 TPI GRADE 5 (MINIMUM) ALL-THREAD. SANDWICH HANGING ANGLES AND CEILING ANCHOR POINTS WITH 1/2" GRADE 5 (MINIMUM) STEEL FLAT WASHERS AND 1/2" - 13 TPI GRADE 5 (MINIMUM) HEX NUTS AS SHOWN. MUST USE DOUBLED HEX NUT CONFIGURATION ABOVE CEILING ANCHORS. SINGLE HEX NUT BENEATH HANGING ANGLE IS ACCEPTABLE FOR PSP HANGING ANGLES. MAINTAIN 1/4" OF EXPOSED THREADS BENEATH BOTTOM HEX NUT. TORQUE ALL HEX NUTS TO 57 FT-LBS.

REVISIONS

DESCRIPTION	

www.captiveaire.com

Southern California Office

Panda Express - Newport News VA (08164) - rev1
6104 Jefferson Ave,
Newport News VA 23605

DATE: 1/26/202

DWG.#:
5294505

DRAWN BY: AH-86

SCALE:
3/4" = 1'-0

MASTER DRAWING

SHEET NO.
1



PANDA EXPRESS, INC.
1683 Walnut Grove Ave.
Rosemead, California
91770
Telephone: 626.799.9898
Facsimile: 626.372.8288

All ideas, designs, arrangement and plans indicated or represented by this drawing are the property of Panda Express Inc. and were created for use on this specific project. None of these ideas, designs, arrangements or plans may be used by or disclosed to any person, firm, or corporation without the written permission of Panda Express Inc.

REVISIONS:

Δ	SOLUTION F.2	09.30.21
Δ	OWNER REVISIONS	01.27.22

ISSUE DATE:

	ISSUE FOR PERMIT	01-29-21
	ISSUE FOR BID	04-30-21
	ISSUE FOR BID 2	11-02-21
	ISSUE FOR BID (DT)	02-04-22

DRAWN BY: AE

PANDA PROJECT #: D8164
PANDA STORE #: -
ARCH PROJECT #: 261-321



MPW ENGINEERING, LLC
110 W. 7TH STREET • SUITE 600 • TULSA, OK 74119
(918) 583-4088 • (918) 583-4087 FAX

FOR INFORMATION ONLY

PANDA EXPRESS

TRUE WARM & WELCOME
JEFFERSON AVE. & MORRIS DR.
NEWPORT NEWS, VA 23605

M-400

HOOD DETAIL PLAN

TRUE WARM & WELCOME 2300 R6

ISSUE FOR PERMIT 11-02-21

ISSUE FOR PERMIT 11-02-21