

## CORNER RECORD

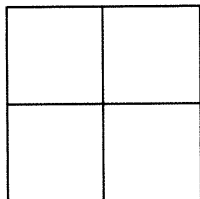
Agency Index

Document Number

CR 9985City of EDEN TOWNSHIPCounty of ALAMEDA, CaliforniaBrief Legal Description BRASS DISK MONUMENT LOCATED WITHIN BLACKSTONE CT.

## CORNER TYPE

## COORDINATES (Optional)



Government Corner ☐ Control ☒  
 Meander ☐ Property ☐  
 Rancho ☐ Other ☐

N. 2072504 E. 6116983

Elevation

Units Metric ☐ U.S. Survey Foot ☒

Horizontal Datum

Zone Epoch Date

Vertical Datum

☐ Complies with Public Resources Code §§8801-8819☐ Complies with Public Resources Code §§8890-8902Date of Survey 5/11/17PLS Act Ref: ☐ 8765(d) ☒ 8771 ☐ 8773 ☐ Other:

Corner/  
Monument: ☒ Left as found ☐ Established ☐ Rebuilt ☐ Pre-Construction  
☐ Found and tagged ☐ Reestablished ☐ Referenced ☒ Post-Construction

Narrative of corner identified and monument as found, set, reset, replaced, or removed:

☒ See sheet #2 for description(s) : SEE CR 8813

FOUND BRASS DISK AND PUNCH IN MONUMENT WELL.

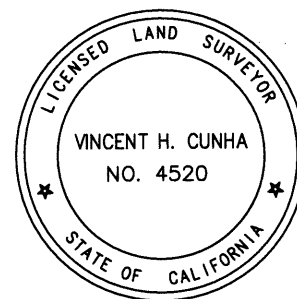
FOUND AND SET POINTS AS SHOWN ON PAGE 2.

THIS POINT WAS FOUND IN GOOD CONDITION AFTER A CONSTRUCTION PROJECT IN THE VICINITY.

THE TIES SHOWN HEREON ARE FOR THE PURPOSE OF PERPETUATING FOUND MONUMENTATION.  
 NO CLAIM IS MADE AS TO THE RELATIONSHIP OF THE POINTS OR LINES SHOWN HEREON TO TRUE  
 BOUNDARY LOCATION.

## SURVEYOR'S STATEMENT

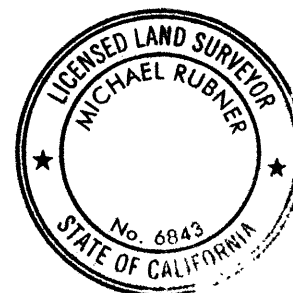
This Corner Record was prepared by me or under my direction in conformance with

the Professional Land Surveyors' Act on MAY 12, 2017.Signed Vincent H. Cunha P.L.S. or R.C.E. No. LS 4520  
VINCENT H. CUNHA

## COUNTY SURVEYOR'S STATEMENT

This Corner Record was received 22 MAY, 2017and examined and filed 29 JUNE, 2017.Signed Michael Rubner P.L.S. or R.C.E. No. 6843Title COUNTY SURVEYOR

County Surveyor's Comment



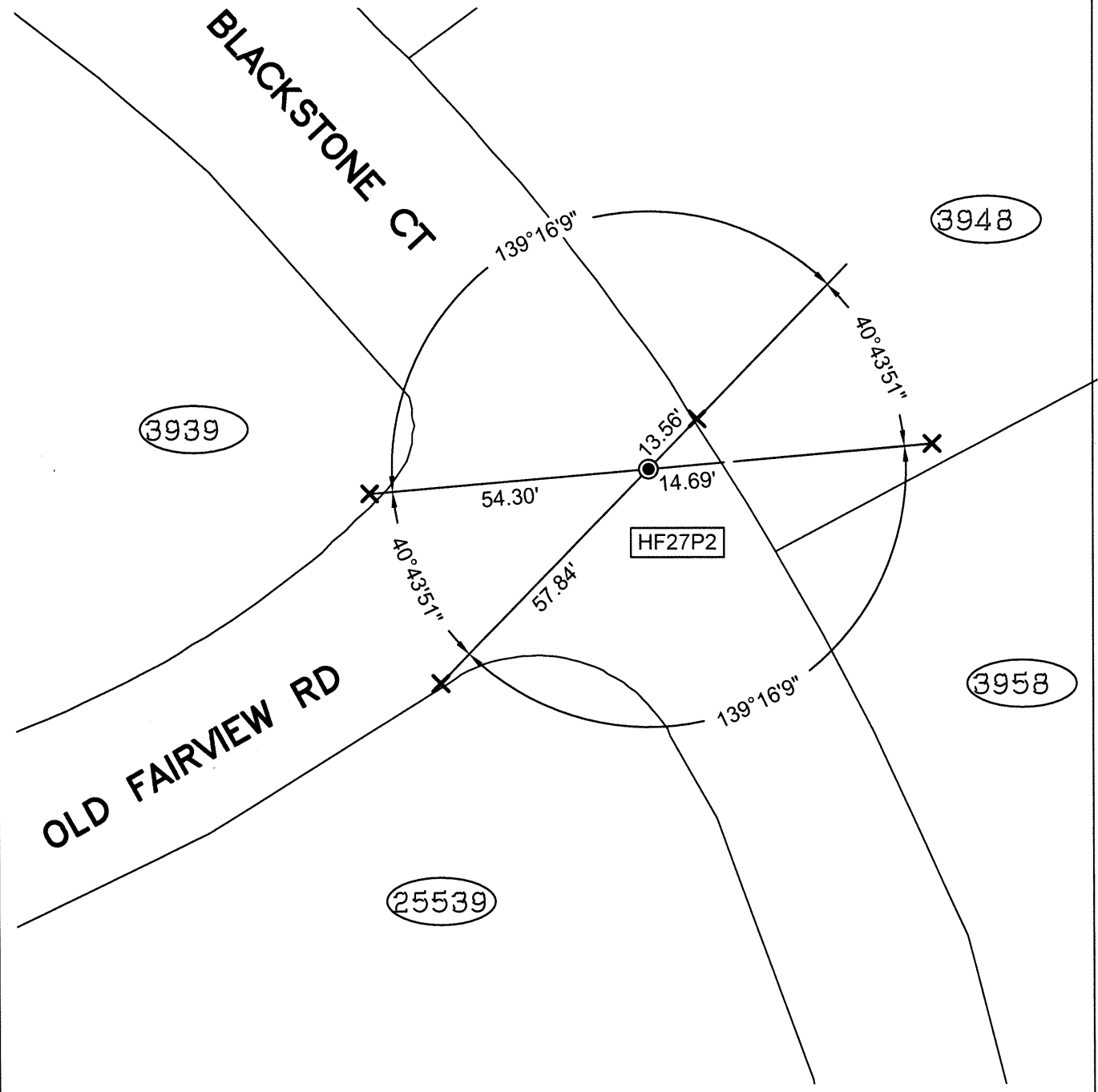
SPEC-2303-POST

SCALE: 1"=30'

## LEGEND

- FOUND BRASS DISK WITH PUNCH IN MONUMENT WELL
- ⊗ FOUND CUT CROSS IN WALK
- ✕ FOUND CUT CROSS IN CURB
- ✕ FOUND MAG AND SHINER
- FOUND REBAR & CAP STAMPED "CEI RP"
- AA##A# ALAMEDA COUNTY MONUMENT ID

(19592) REFERENCE STREET ADDRESS



216129-Blackstone-CR03 Poat