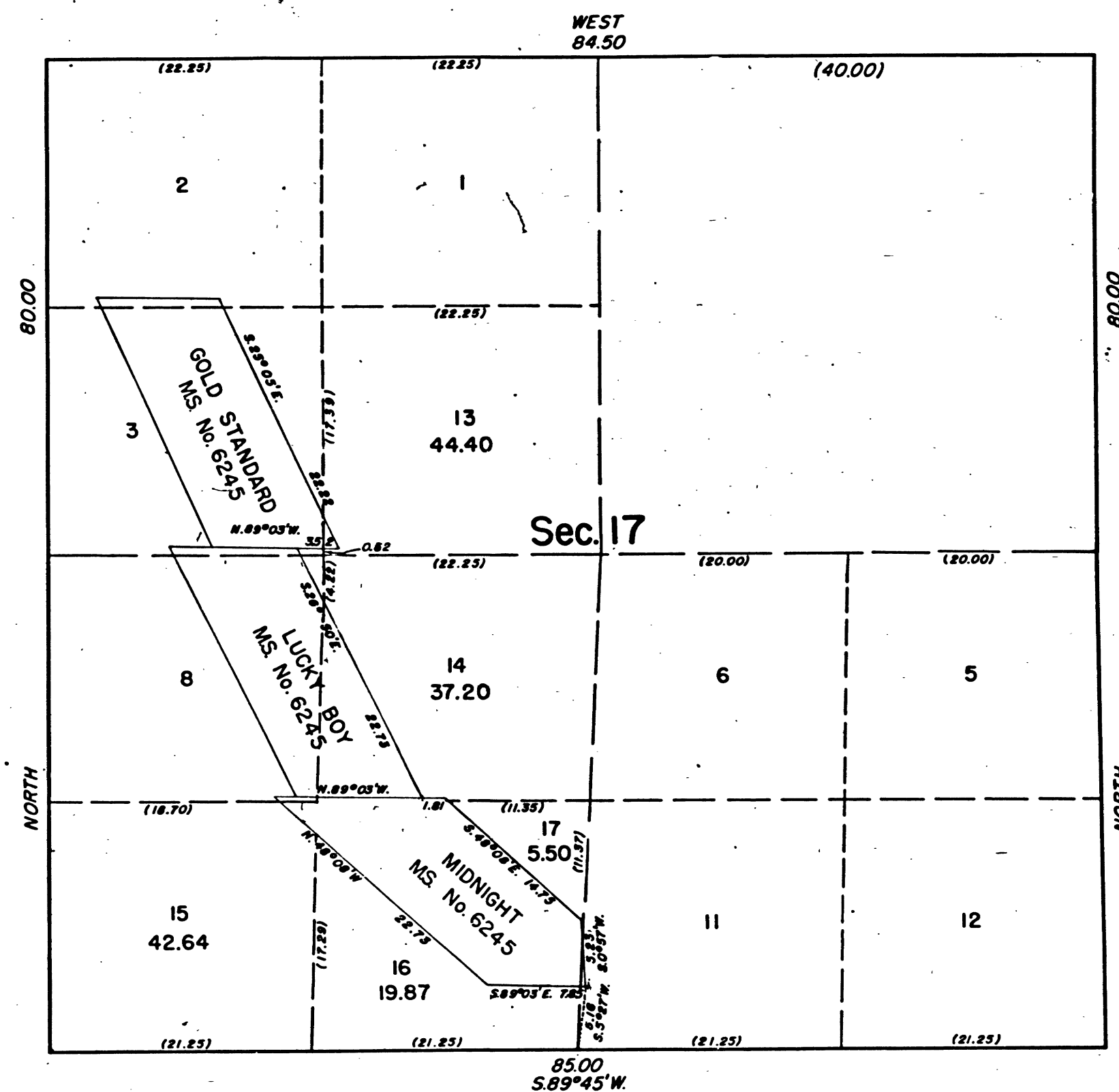


TOWNSHIP 3 NORTH, RANGE 11 EAST, OF THE MOUNT DIABLO MERIDIAN, CALIFORNIA.
SUPPLEMENTAL PLAT



This plat, showing amended lottings by the segregation of the Gold Standard, Lucky Boy, and Midnight lodes of Mineral Survey No. 6245 in Section 17, T. 3 N., R. 11 E., Mount Diablo Meridian, California, is based upon the plats approved February 24, 1871 and July 14, 1884, and the mineral survey approved October 22, 1943.

UNITED STATES DEPARTMENT OF THE INTERIOR
BUREAU OF LAND MANAGEMENT
Washington, D. C. May 27, 1958

This plat, showing amended lottings, is based upon the official records, and having been correctly prepared in accordance with the regulations, is hereby accepted.

For the Director

Donald O. Cement

Acting Cadastral Engineering Staff Officer

41 220-A

T 3 N, R 11 E, MDM

BLM 86