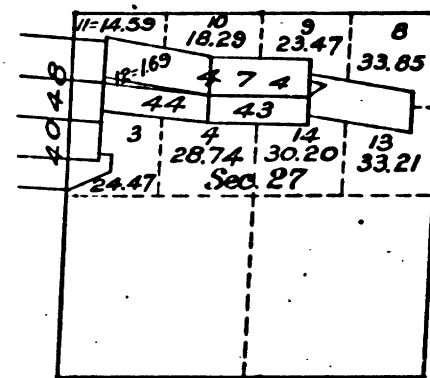
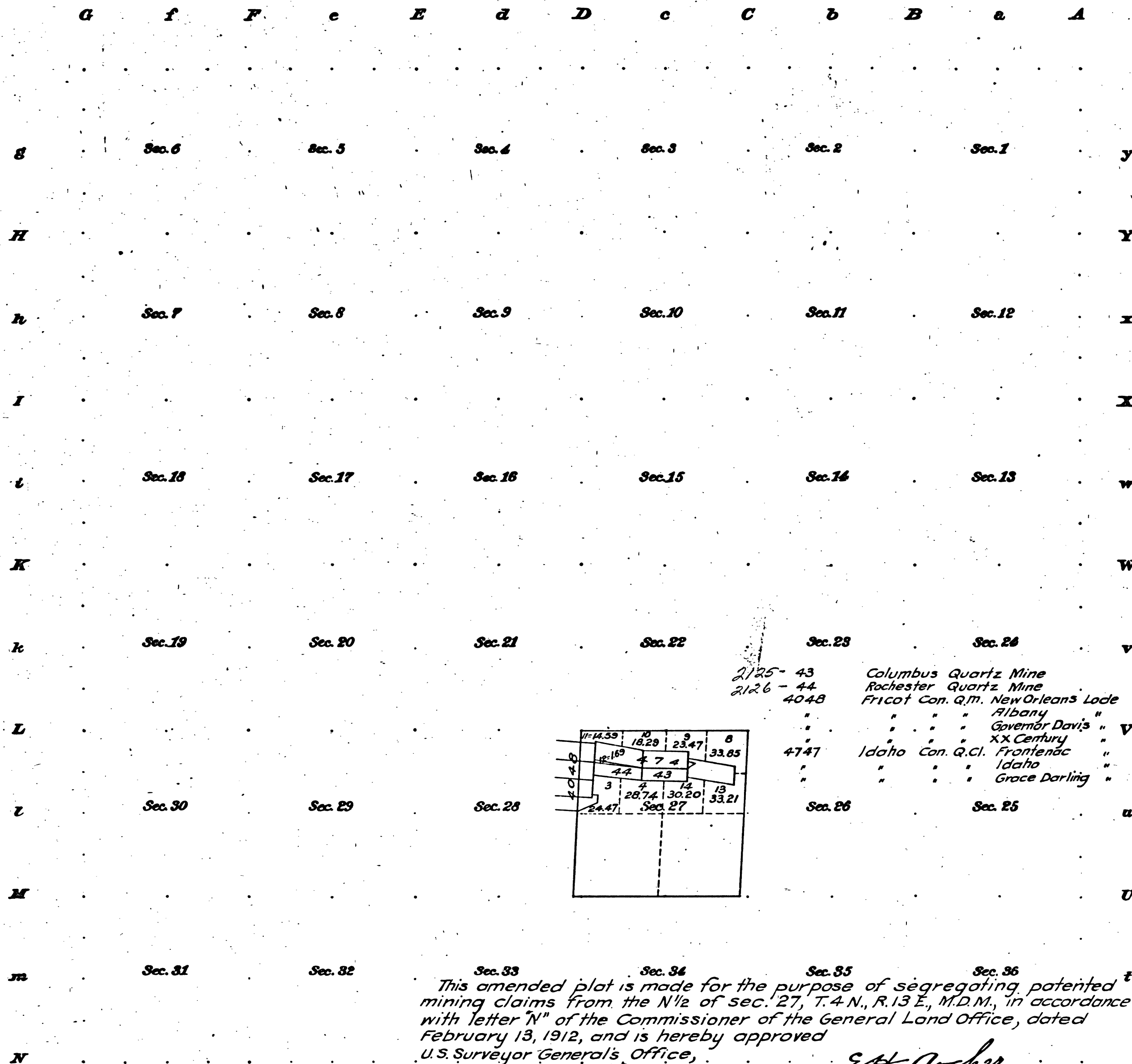


Amended Plat of N½ of Section 27,
Township No. 4 North Range No. 13 East, Mount Diablo Meridian, California



2125-43 Columbus Quartz Mine
2126-44 Rochester Quartz Mine
4048 Fricot Con. Q.M. New Orleans Lode
" Albany Governor Davis "
" XX Century
4747 Idaho Con. Q.Cl. Frontenac
" Idaho Grace Darling
" "

Areas in Acres.	
Public Land	
Indian Reservation	
Indian Allotments	
Mineral Claims	
Water Surface	
Total Area	

This amended plat is made for the purpose of segregating patented mining claims from the N½ of sec. 27, T.4 N., R.13 E., M.D.M., in accordance with letter 'N' of the Commissioner of the General Land Office, dated February 13, 1912, and is hereby approved
U.S. Surveyor General's Office,
San Francisco, California.
February 27, 1912.

E.H. Archer
U.S. Surveyor General
for California.

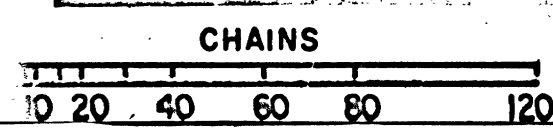
Scale 40 Chains to an inch
Mean Magnetic Declination.

Surveys Designated.	By Whom Surveyed.	Contract		Amount of Surveys		When Surveyed.	
		No.	Dts.	1/4. chs.	1/4. chs.	Begin.	Completed.

The above map of Township No. _____ Range No. _____ of the _____ Meridian _____ is strictly conformable to the field notes of the survey thereof on file in this office, which have been examined and approved.
U.S. Surveyor General's Office,
Surveyor General.

41 340

Accepted per Letter "E"
dated *mch 11* 1912
Chas. H. 12



T4 N R13E MD

BLM 180