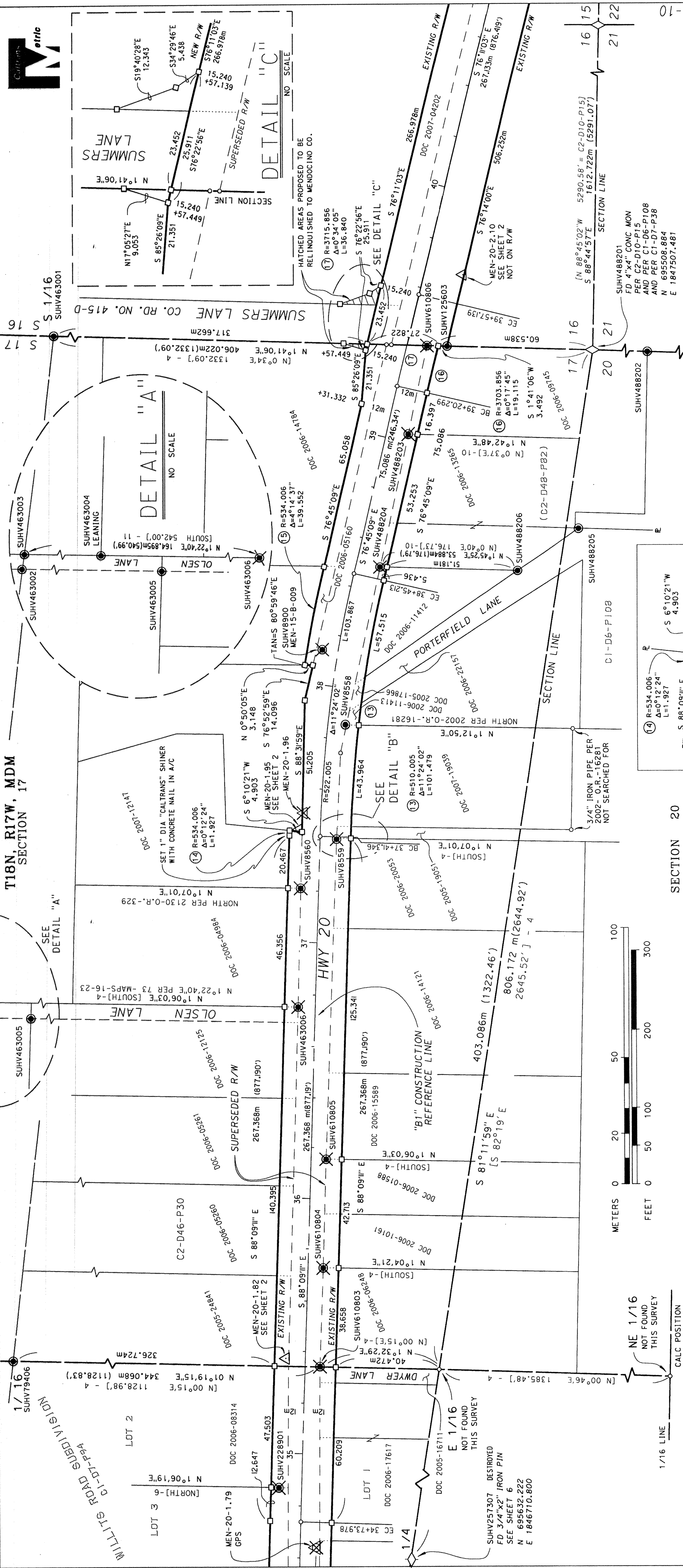


T18N, R17W, MDM
SECTION 17



SECTION 20

LEGEND

- SET 1" GALV IRON PIPE W/ COOT PLASTIC CAP STAMPED "CALTRANS RW"
- △ SET CONTROL MONUMENT, 3/4" REBAR W/ ALUM CAP STAMPED "AS NOTED"
- ✕ DESTROYED CONTROL MONUMENT PER MAPS, DRAWER T3, PAGES 16 - 23
- ◇ FOUND SECTION CORNER AS NOTED
- FOUND MONUMENT PER TABLES
- ✕ DESTROYED LANDMARK MONUMENT PER MAPS, DRAWER T3, PAGES 16 - 23
- ANGLE POINT, NOTHING FOUND OR SET
- [~]-1 RECORD DATA PER HARDELL SUBDIVISION C1-D6-P97
- [~]-4 RECORD DATA PER C1-D6-P108
- [~]-6 RECORD DATA PER C1-D7-P94
- [~]-7 RECORD DATA PER C2-D59-P40
- [~]-8 RECORD DATA PER C2-D25-P73
- [~]-9 RECORD DATA PER C2-D22-P89
- [~]-10 RECORD DATA PER C2-D48-P82
- [~]-11 RECORD DATA PER C2-D46-P30

FOUND MONUMENT DATA				MAP REFERENCE	
NAME	NORTHING	EASTING	DESCRIPTION		
SUHV8558	695606.252	1847361.080	1" IRON PIPE, NO TAG	2002- O.R. -16281	
SUHV79406	695961.191	1847118.327	1" BOLT	C1 - D7 - P94	
SUHV10501	695115.068	1847494.447	3/4" REBAR, NO TAG	C2 - D10 - P15	
SUHV463001	695914.730	1847519.419	1.25" IRON PIPE, NO TAG	C1 - D6 - P108	
SUHV463002	695791.226	1847248.781	PK NAIL W/WASHER, LS 3184	C2 - D46 - P30	
SUHV463003	695790.285	1847254.862	3/4" REBAR, MKD LS 3184	C2 - D46 - P30	
SUHV463004	695753.693	1847254.095	3/4" REBAR, MKD LS 3184	C2 - D46 - P30	
SUHV463005	695729.856	1847247.598	PK NAIL W/WASHER, LS 3184	C2 - D46 - P30	
SUHV488201	695508.884	1847507.481	4"x4" CONC MON, SEC COR	C1 - D6 - P108	
SUHV488202	695487.587	1847506.818	3/4" REBAR, MKD LS 3184	C2 - D48 - P82	
SUHV488205	695514.756	1847437.936	3/4" REBAR, MKD LS 3184	C2 - D48 - P82	
SUHV488206	695538.628	1847421.300	3/4" REBAR, MKD LS 3184	C2 - D48 - P82	
SUHV25603	695565.896	1847509.198	1/2" REBAR, MKD LS 3184	C2 - D12 - P56	

BEARINGS, DISTANCES, AND COORDINATES ARE BASED ON THE CALIFORNIA COORDINATE SYSTEM OF 1983, ZONE 2, EPOCH 1991.35 (CCS83 METRIC).
DIVIDE DISTANCES SHOWN BY 0.9999228 TO OBTAIN GROUND DISTANCES.
TO CONVERT METERS TO U.S. SURVEY FEET, MULTIPLY DISTANCES BY (3937 / 1200).

RECORD OF SURVEY
OF MONUMENTATION
ALONG STATE HIGHWAY 20
IN MENDOCINO COUNTY, CALIFORNIA

FOR
STATE OF CALIFORNIA
DEPARTMENT OF TRANSPORTATION
1656 UNION STREET, EUREKA

IN SECTIONS 16, 17, 20, 21
T 18 N, R 17 W, MDM

SCALE: 1:1000		DATE: MAY, 2010		MAPS	
CO	ROUTE	POST MILE	SHEET	DRAWER	
MEN	20	0.3/2.4	7 OF 8	PAGE	87

#033