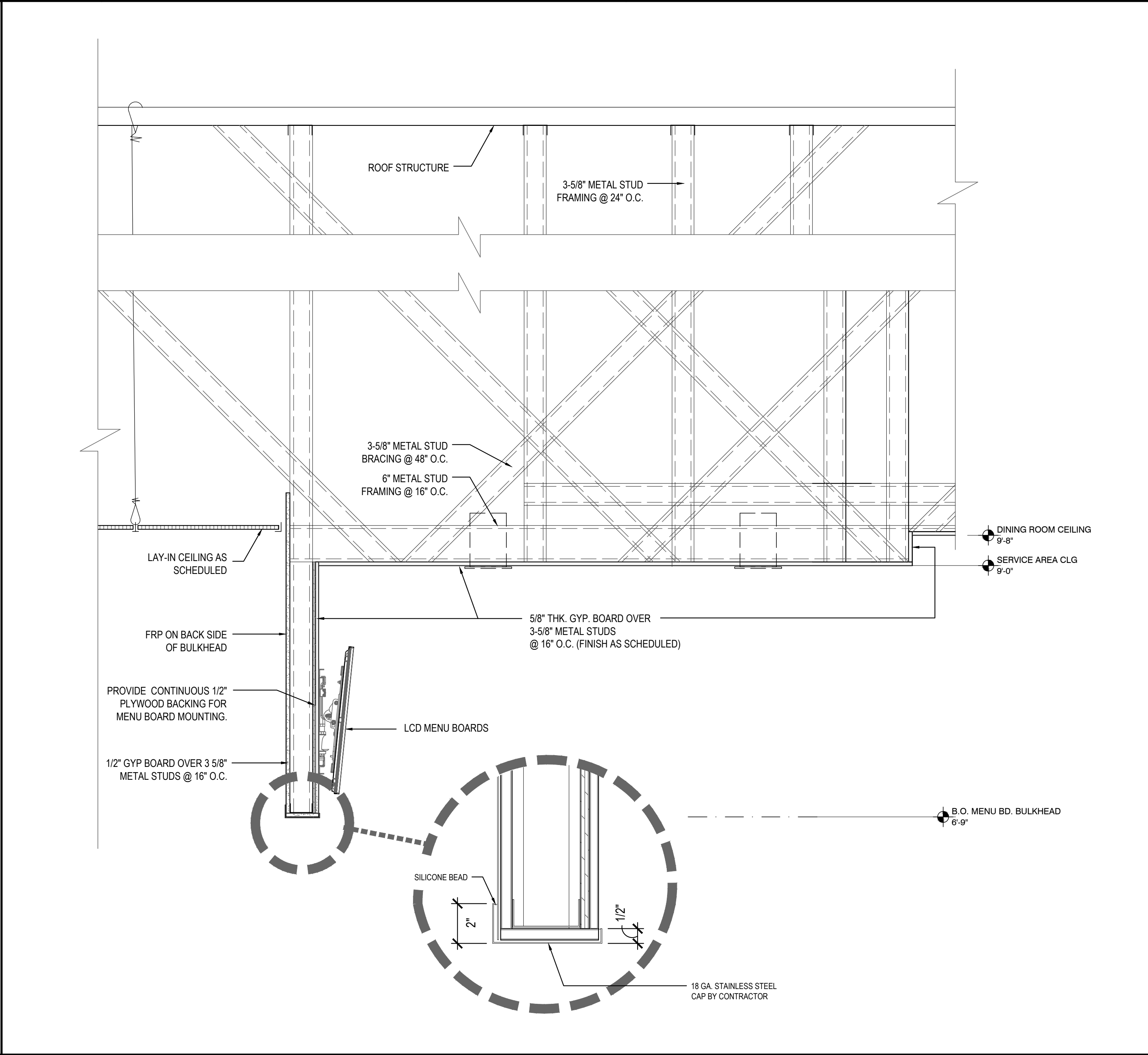
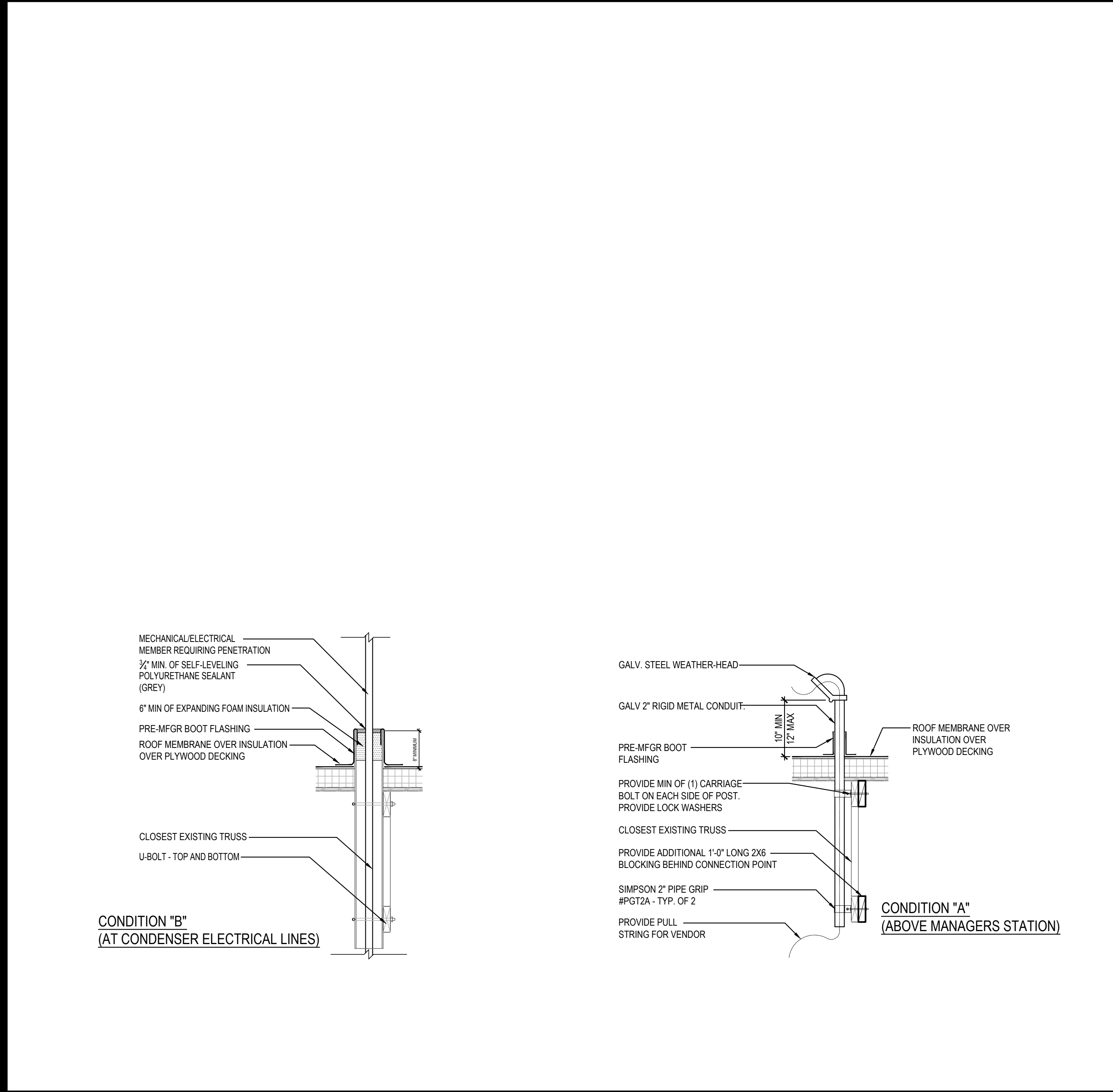


NOT USED		5	ROOF PENETRATION DETAIL (WHERE APPLICABLE)	3	S.S. DETAIL @ COOLER/ FREEZER
NTS		A-407	NTS	A-407	NTS



ROOF PENETRATION DETAIL (WHERE APPLICABLE)		4	SECTION AT SERVICE AREA CEILING		1
NTS		A-407	NTS		A-407



PANDA EXPRESS, INC.
1683 Walnut Grove Ave.
Rosemead, California
91770
Telephone: 626.799.9898
Facsimile: 626.372.8288

All ideas, designs, arrangement and plans indicated or represented by this drawing are the property of Panda Express Inc. and were created for use on this specific project. None of these ideas, designs, arrangements or plans may be used by or disclosed to any person, firm, or corporation without the written permission of Panda Express Inc.

REVISIONS:		
1	PLAN REVIEW COMMENTS	05/17/2022
2	PLAN REVIEW COMMENTS	03/08/2023

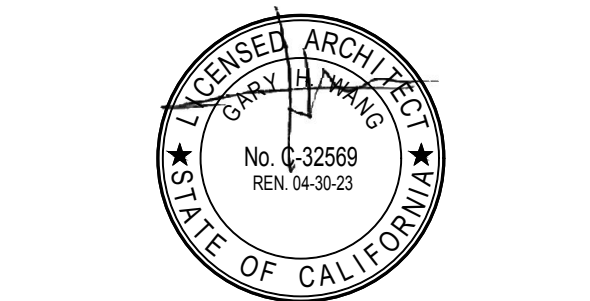
ISSUE DATE:		
1	95% SUBMITTAL	04/22/2022
2	100% SUBMITTAL	10/28/2022
3	100% RESUBMITTAL	03/08/2023

DRAWN BY: STAFF

PANDA PROJECT #: D7898
ARCH PROJECT #:



GARY WANG
& ASSOCIATES, INC.
1000 Corporate Center Dr., Ste. 550
Monterey Park, CA 91754
TEL: (626) 288-6898 FAX: (626) 768-7101
<http://www.garywang.com>



PANDA EXPRESS &
HIBACHI-SAN
MCAS NEW RIVER BLDG AS 4052
CURTIS RD & CAMPBELL ST
JACKSONVILLE, NC 28540

A-407
ARCHITECTURAL
DETAILS

BID SET (04/10/2023) NOT FOR CONSTRUCTION