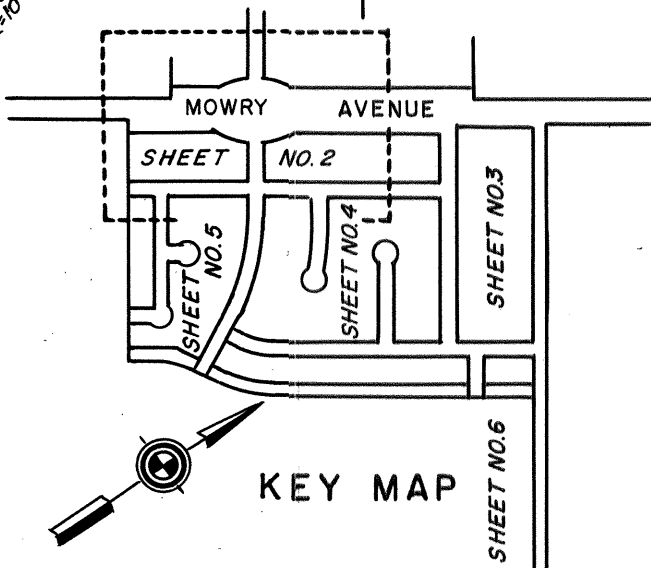


TR
2101

LEGEND:
Existing monuments are shown thus
Concrete monuments with castiron frame and cover to be installed are shown thus
Public utility easements are designated thus P.U.E.
Anchor easements are designated thus A.E.
Building set-back lines, to be as required by the Zoning Ordinance of the City of Fremont, are designated thus B.S.B.L.

BASIS OF BEARINGS:
The bearing of MOWRY AVENUE was taken as N. 33° 28' E. as a basis of bearings for this tract.



**TRACT 2101
FREMONT VILLAGE
UNIT NO. 3
IN THE CITY OF FREMONT
IN THE COUNTY OF ALAMEDA
CALIFORNIA**

NOVEMBER, 1959 SCALE: 1 INCH = 50 FEET
John A. Mancini,
Registered Civil Engineer No. 1592
AR41822 Sheet No. 2 of 6 Sheets

