

SCALE: 1" = 50'

BASIS OF BEARINGS

THE BASIS OF BEARINGS USED FOR THIS MAP IS THE MEASURED BEARING BETWEEN TWO MONUMENTS NEAR THE EAST R/W LINE OF HIGHWAY 182, SHOWN HEREON AS N 02°13'39" W, AS SHOWN ON TMB 10/27. (NOTE: THESE MONUMENTS WERE NOT HELD FOR THE EAST R/W LINE - SEE DETAIL)

EASEMENT NOTE: A BLANKET EASEMENT TO WALKER RIVER IRRIGATION DISTRICT FOR POWER AND TELEPHONE LINES EXISTS ON THESE PROPERTIES PER 40/572 O.R.

NORTH TAMARACK DRIVE

SIERRA VIEW DRIVE

STATE ROUTE 182

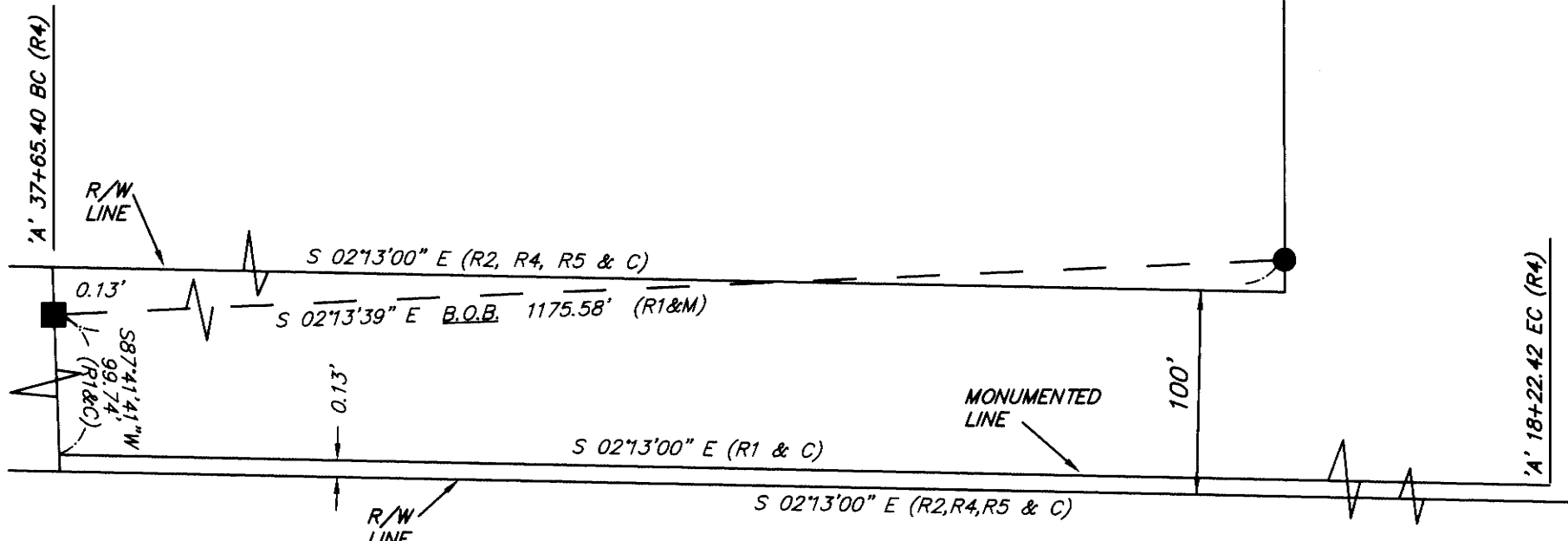
ALPINE

VISTA

WAY

LEGEND

- SET 5/8" RB & CAP, "LS 4587", UNLESS OTHERWISE NOTED
- FOUND SURVEY MONUMENT AS NOTED
- FOUND 6X6 CONC. MON. PER R/W RECORD MAP 09-MNO-182 P.M. 0.3&0.9, UNLESS OTHERWISE NOTED
- R1 - TRACT MAP BOOK 10, PAGE 27
- R2 - MAP BOOK 2, PAGE 35
- R3 - MAP BOOK 7, PAGE 40
- R4 - CALTRANS R/W MAP, 09-MNO-182 P.M. 0.3&0.9
- R5 - PARCEL NO. 1, VOL. 12, PAGE 194 O.R.



DETAIL  
NTS

GROSS AREA = 3.63 ACRES NET AREA = 3.03 ACRES

ALPINE VISTA ESTATES  
FINAL MAP TRACT NO. 32-09

IN THE UNINCORPORATED TERRITORY OF MONO COUNTY

BEING A RESUBDIVISION OF LOTS 2, 3, AND 4 OF  
SIERRA VIEW ESTATES PER MAP RECORDED IN MAP  
BOOK 2 AT PAGE 35 IN THE COUNTY OF MONO, STATE  
OF CALIFORNIA

1264 TM32-09.DWG  
triad/holmes associates

SHEET 2 OF 2