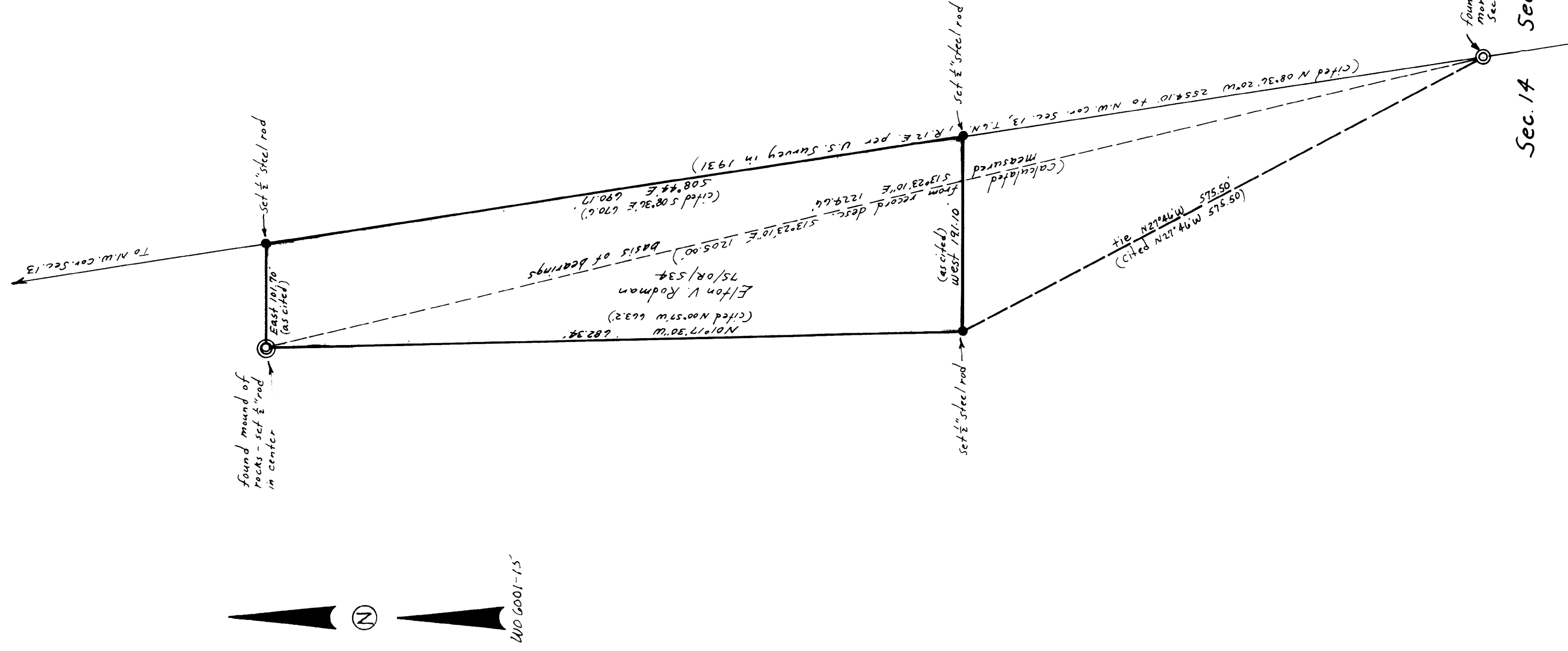


RECORD OF SURVEY
PROPERTY OF ELTON V. RODMAN

PORTION OF THE S.E. $\frac{1}{4}$ OF THE NE. $\frac{1}{4}$
OF SECTION 14, T.6N, R.12E, M.D.M.

LEDGER L. McMINN - AMADOR COUNTY SURVEYOR
JANUARY 1960
SCALE 1"=100'



Note: This is a retracement of that portion of the "CLINTON BAR PLACER MINE" lying within Section 14, T.6N, R.12E, M.D.M. The original survey of the mine was made by Walter H. Ralph, and is shown upon map recorded July 29, 1935 in Book 1 of Maps and Plats at page 27.

The only original points recovered were the $\frac{1}{4}$ corner monument and a mound of rocks marking the established corner of the placer mine. The calculated course based upon Ralphs map between these points is South 13°23'10" East 1205.00 feet. The measured course between these points based upon this survey is South 13°23'10" East 1224.66. The tie distance to the South boundary was held and the excess placed in the North-South dimension.

The meridian of this survey is referred to the bearing calculated from Ralphs recorded map between the $\frac{1}{4}$ Sec. cor. mon and the mound of rocks at the N.W. cor. of the placer mine.

SURVEYORS CERTIFICATE

This map correctly represents a survey made by me or under my direction in conformance with the requirements of Chapter 15 of Division 3 of the Business and Professions Code at the request of Elton V. Rodman in January, 1960.

Ledger L. McMinn
Ledger L. McMinn - L.S. 2902
Amador County Surveyor

COUNTY SURVEYORS CERTIFICATE

This map has been examined for conformance with the requirements of Chapter 15 of Division 3 of the Business and Professions Code this 21st day of January, 1960.

Ledger L. McMinn
Ledger L. McMinn
Amador County Surveyor

COUNTY RECORDERS CERTIFICATE

Filed for record this 2 day of February, 1960, at 11:35 a.m. in Book 6 of Maps and Plats at page 55 at the request of Elton V. Rodman.

William D. Decker
Amador County Recorder

Fee 5.00 p.i.

Deputy Recorder