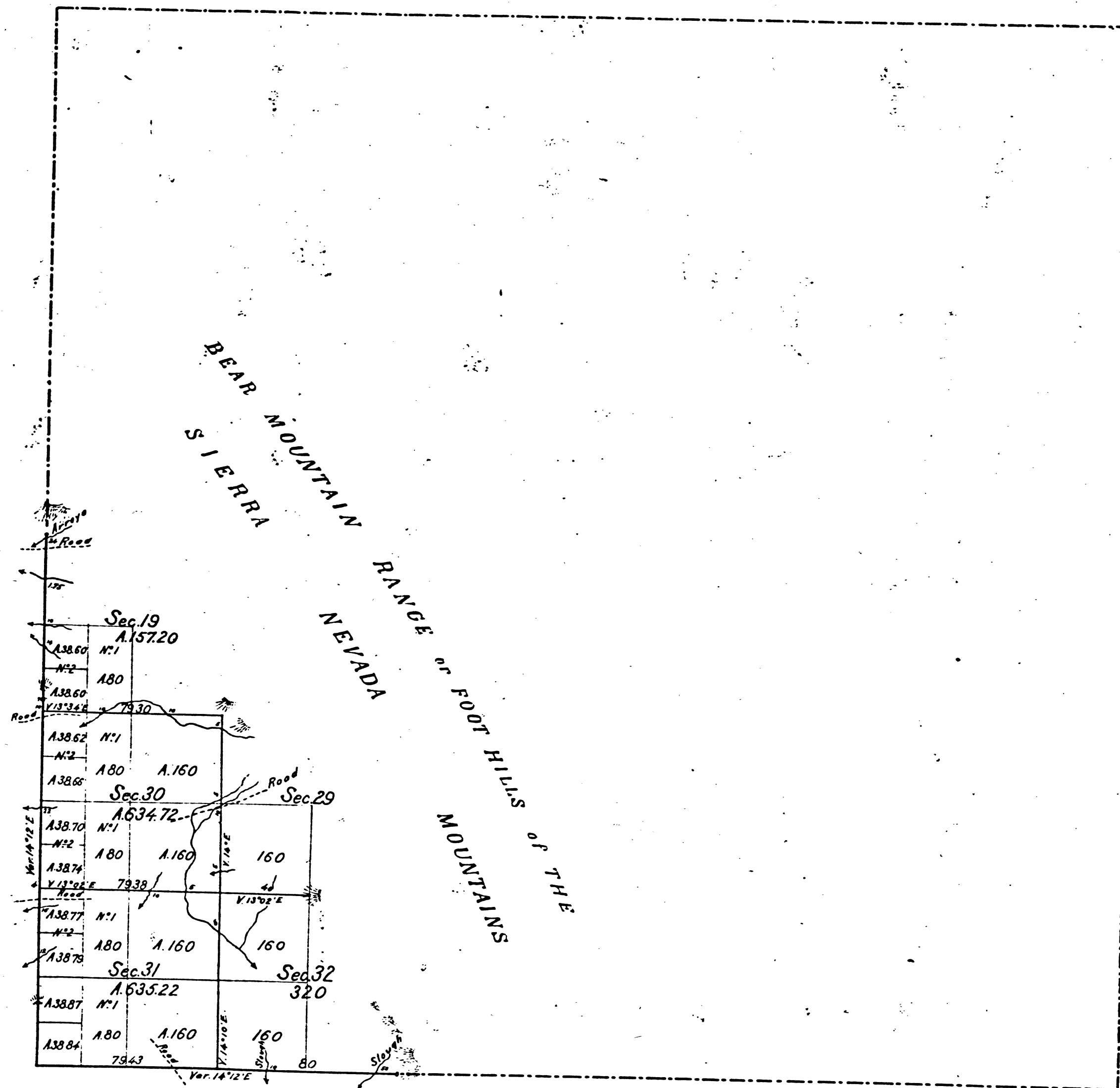


Fractional Township N°2 North

Range N°11 East

Mount Diablo Meridian

gem  
0.1  
128  
185.1



Aggregate Area of Public Lands (surveyed) 1,907.14 Acres  
Estimated ... " Mountain " (unsurveyed) 21,132.86 "  
Aggregate 23,040.00 "

Surveys Designated	By Whom Surveyed	Date of Contract	Amount of Surveys	When Surveyed
South Boundary of Township	Jasper Whiting	February 13 <sup>th</sup> 1855	1 79 43	1855
West Section " lines "	" "	" " "	3 00 00	"
	" "	" " "	4 38 68	"

The above Map of Township N°2 North, Range N°11 East, (Mount Diablo Meridian) is strictly conformable to the field notes of the surveys thereof on file in this Office which have been examined and approved  
Surveyor General's Office  
San Francisco California  
October, 19<sup>th</sup> 1855

*John C. Neary*  
Surv. Gen. Cal.

DEPARTMENT OF  
GENERAL LANDS  
Washington, D. C.  
I hereby certify that  
of the plat of official  
to which it relates, on file

*H. J. [Signature]*  
Recorder

41 099

BLM 15