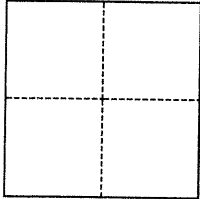


# CORNER RECORD

Agency Index BK 121 PG 64Document Number CR-12745City of SAN LEANDRO County of ALAMEDA, CaliforniaBrief Legal Description City Monument at the intersection of Montreal and Vining; TR 1924, 39M5**CORNER TYPE**

- ☐ Government Corner ☒ Control  
☐ Meander ☐ Property  
☐ Rancho ☐ Other

Date of Survey September 20, 2018**COORDINATES (Optional)**

N. \_\_\_\_\_ E. \_\_\_\_\_

Elevation \_\_\_\_\_

Units ☐ Metric ☐ U.S. Survey Foot

Horizontal Datum \_\_\_\_\_

Zone \_\_\_\_\_ Epoch Date \_\_\_\_\_

Vertical Datum \_\_\_\_\_

☐ Complies with Public Resources Code §§8801-8819☐ Complies with Public Resources Code §§8890-8902PLS Act Ref.: ☐ 8765(d) ☒ 8771 ☐ 8773 ☐ Other:

Corner/  
Monument: ☒ Left as found ☐ Established ☐ Rebuilt ☒ Pre-Construction  
☐ Found and tagged ☐ Reestablished ☒ Referenced ☐ Post-Construction

Narrative of corner identified and monument as found, set, reset, replaced, or removed:

☒ See sheet #2 for description(s):

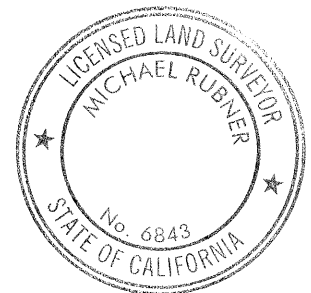
Referenced City Monument at the intersection of Montreal Street and Vining Drive as shown on Tract Map 1924, Book 39 Page 5, as shown on page 2.

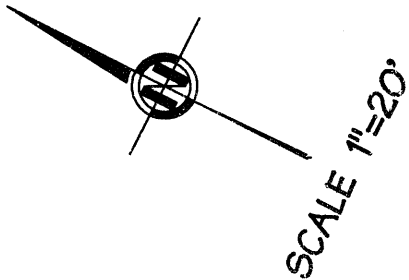
**SURVEYOR'S STATEMENT**

This Corner Record was prepared by me or under my direction in conformance with

the Professional Land Surveyors' Act on May 9, 2019Signed [Signature] P.L.S. or P.C.E. No. 7905**COUNTY SURVEYOR'S STATEMENT**This Corner Record was received 13 FEBRUARY 2019and examined and filed 10 JULY 2019Signed Michael Rubner P.L.S. or P.C.E. No. 6843Title COUNTY SURVEYOR

County Surveyor's Comment

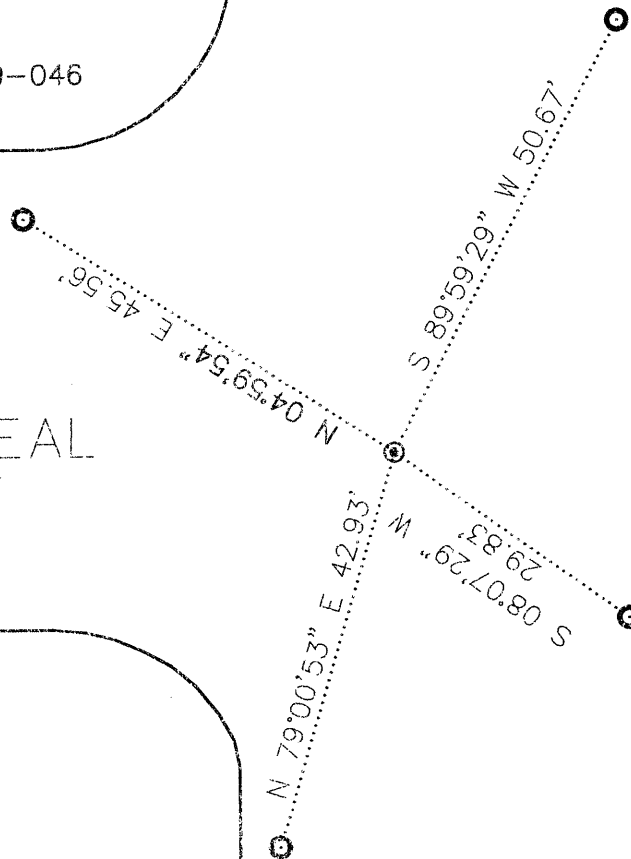




APN: 80G-1099-046

MONTREAL  
STREET

VINING DRIVE

BASIS OF BEARING:

N 62°28'34" E IS TAKEN BETWEEN  
THE MONUMENT AT VINING DRIVE AND  
CRANBROOK STREET, AND THE MONUMENT  
A VINING DRIVE AND ELKO COURT.

LEGEND:

FOUND STANDARD CITY  
MONUMENT  
SET STAINLESS STEEL  
TAG L.S. 7905

REFERENCE:

TRACT 1924 BOOK 39 PAGE 5