

REVISED

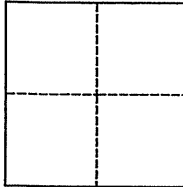
# CORNER RECORD

Agency Index **BK 102 PG 48**  
Document Number CR 10652

City of CASTRO VALLEY County of ALAMEDA, California  
Brief Legal Description MH93B4 (FAIRMONT DRIVE EAST OF FOOTHILL BLVD)

## CORNER TYPE

## COORDINATES (Optional)



Government Corner ☒ Control  
Meander ☐ Property  
Rancho ☐ Other

N. \_\_\_\_\_ E. \_\_\_\_\_

Elevation \_\_\_\_\_

Units Metric ☐ U.S. Survey Foot ☒

Horizontal Datum \_\_\_\_\_

Zone \_\_\_\_\_ Epoch Date \_\_\_\_\_

Vertical Datum \_\_\_\_\_

Date of Survey 07/24/2017

☐ Complies with Public Resources Code §§8801-8819

☐ Complies with Public Resources Code §§8890-8902

PLS Act Ref.: ☒ 8765(d) ☐ 8771 ☐ 8773 ☐ Other:

Corner/  
Monument: ☐ Left as found ☐ Established ☐ Rebuilt ☒ Pre-Construction  
☐ Found and tagged ☐ Reestablished ☐ Referenced ☐ Post-Construction

Narrative of corner identified and monument as found, set, reset, replaced, or removed:

☐ See sheet #2 for description(s):

*FOUND COUNTY BRASS CAP MON MARKED "23B" IN MON WELL, DOWN 12",  
SET FOUR MAG NAILS AND TIES TO LG82A3 AS SHOWN ON SHEET 2.*

## SURVEYOR'S STATEMENT

This Corner Record was prepared by me or under my direction in conformance with

the Professional Land Surveyors' Act on JULY 30, 2017

Signed *[Signature]* P.L.S. or R.C.E. No. LS 5837



## COUNTY SURVEYOR'S STATEMENT

This Corner Record was received September 20, 2017

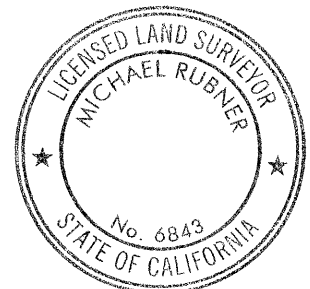
and examined and filed 16 MARCH 2018

Signed *Michael Rubner* P.L.S. or R.C.E. No. 6843

Title COUNTY SURVEYOR

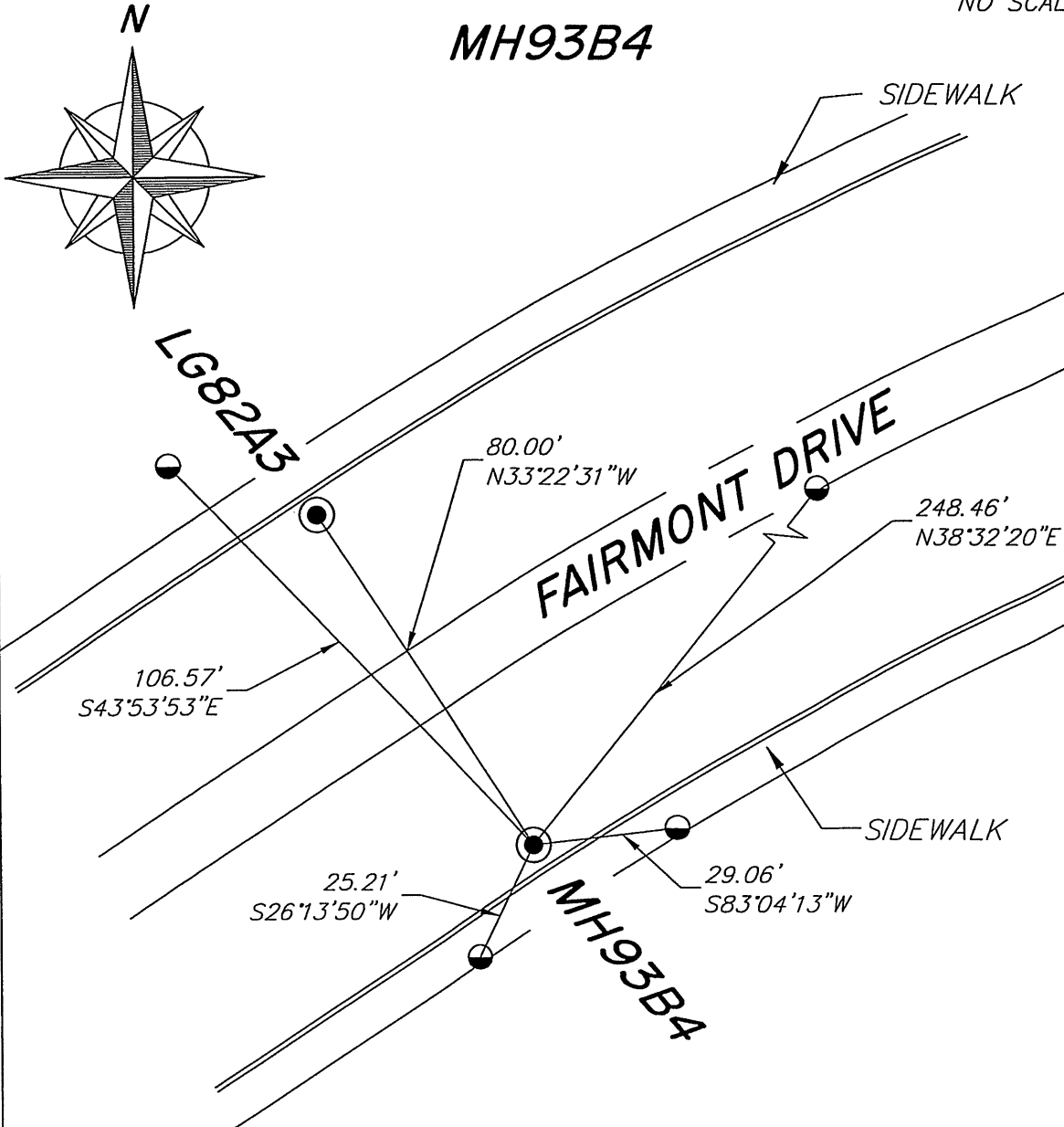
County Surveyor's Comment

*REVISED (26/02/2018)*



SPEC 2279

NO SCALE



## LEGEND

● FOUND ACBCM IN MON WELL

SET MAG NAIL UNLESS  
OTHERWISE SHOWN

ACBCM ALAMEDA COUNTY  
BRASS CAP MONUMENT

NOTE THAT BEARINGS ARE  
APPROXIMATE AND ARE TO  
BE USED FOR ANGLE  
CALCULATIONS ONLY.