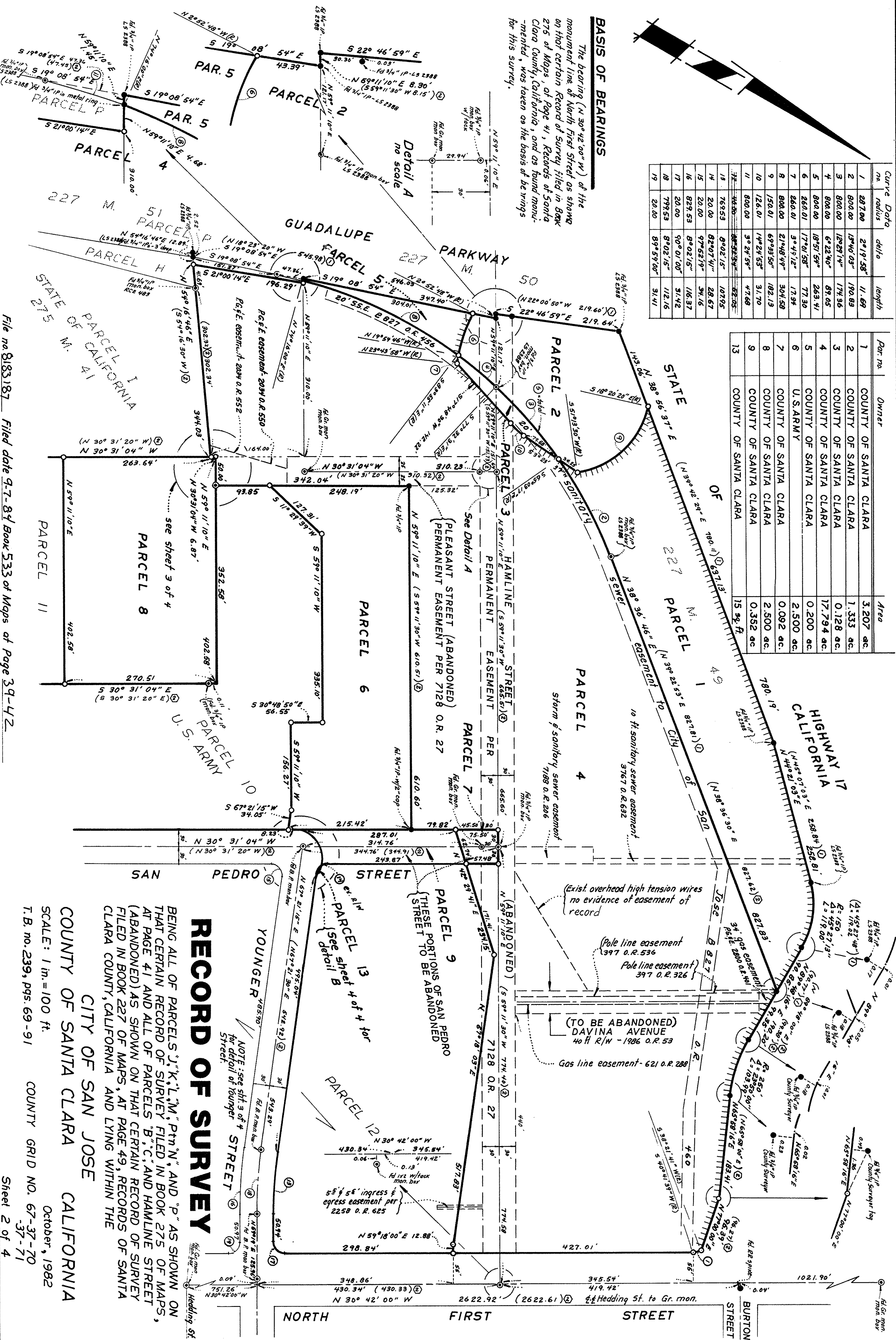
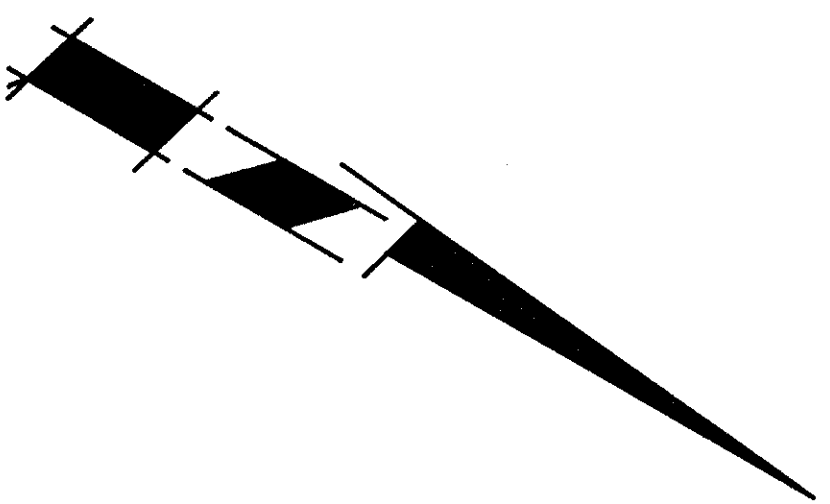


Curve no.	radius	chord	length
1	287.00	219.58'	11.69'
2	800.00	159.40'	170.89'
3	800.00	122.29'	174.96'
4	800.00	62.24'	87.05'
5	800.00	18.51'	26.34'
6	260.01	17.01'	17.30'
7	800.00	2.94'	30.45'
8	150.01	6.93'	182.13'
9	126.01	1.44'	31.70'
10	800.00	3.24'	47.68'
11	765.53	8.02'	107.95'
12	20.00	82.07'	28.67'
13	20.00	97.52'	34.16'
14	823.53	8.02'	16.37'
15	798.53	8.02'	112.16'
16	20.00	89.59'	31.41'

Par. no.	Owner	Area
1	COUNTY OF SANTA CLARA	3.207 ac.
2	COUNTY OF SANTA CLARA	1.333 ac.
3	COUNTY OF SANTA CLARA	0.128 ac.
4	COUNTY OF SANTA CLARA	17.794 ac.
5	COUNTY OF SANTA CLARA	0.200 ac.
6	U.S. ARMY	2.500 ac.
7	COUNTY OF SANTA CLARA	0.082 ac.
8	COUNTY OF SANTA CLARA	2.500 ac.
9	COUNTY OF SANTA CLARA	0.352 ac.
13	COUNTY OF SANTA CLARA	15.34 ac.

# BASIS OF BEARINGS

The bearing (N 30° 42' 00" W) of the monument line of North First Street as shown on that certain Record of Survey filed in Book 275 of Maps, of Page 41, Records of Santa Clara County, California, and as found monumented, was taken as the basis of bearings for this survey.



## RECORD OF SURVEY

BEING ALL OF PARCELS "J", "K", "L", "M", "P", "N", AND "P" AS SHOWN ON THAT CERTAIN RECORD OF SURVEY FILED IN BOOK 275 OF MAPS, AT PAGE 41 AND ALL OF PARCELS "B", "C", AND HAMLINE STREET (ABANDONED) AS SHOWN ON THAT CERTAIN RECORD OF SURVEY FILED IN BOOK 227 OF MAPS, AT PAGE 49, RECORDS OF SANTA CLARA COUNTY, CALIFORNIA AND LYING WITHIN THE

CITY OF SAN JOSE  
COUNTY OF SANTA CLARA  
CALIFORNIA

SCALE: 1 in. = 100 ft.

T.B. no. 239, pgs. 69-91

COUNTY GRID NO. 67-37-70

-37-71

Sheet 2 of 4

File no. 8183187 Filed date 9-7-84 Book 533 of Maps of Page 39-42