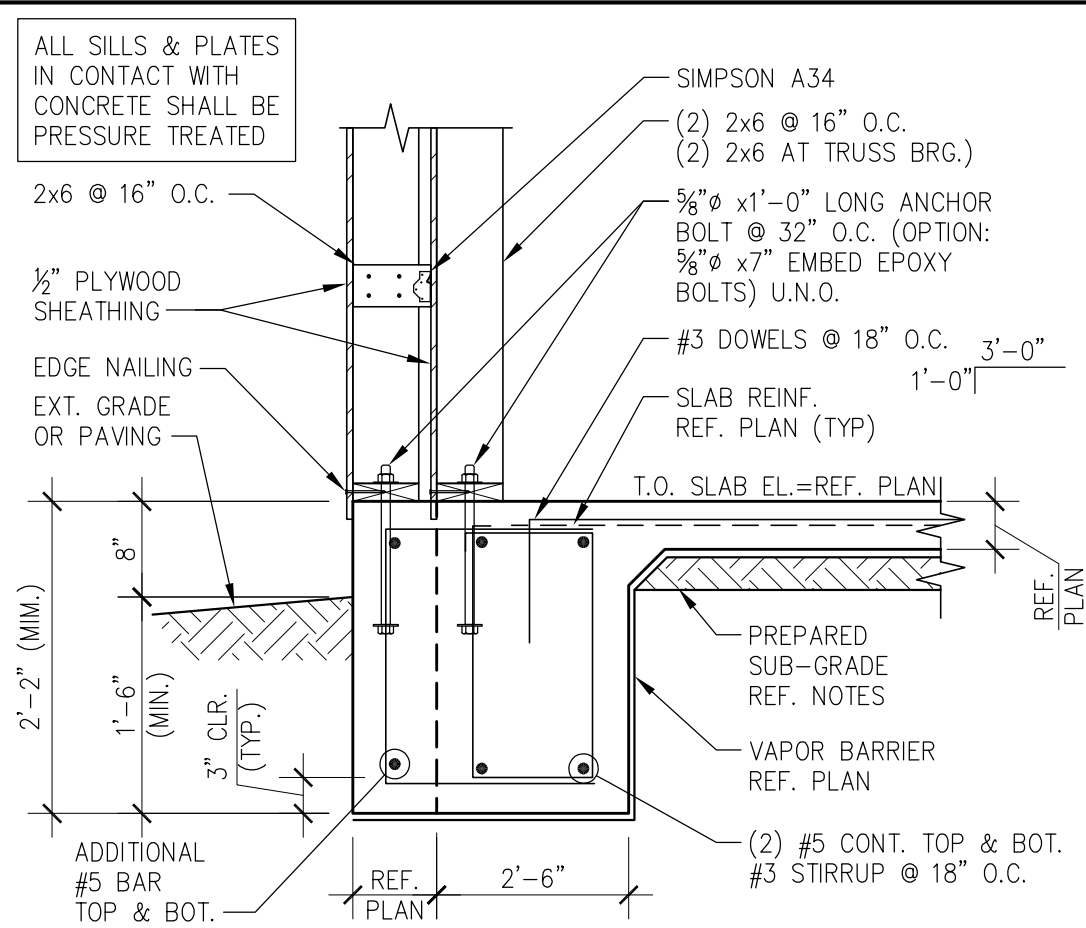
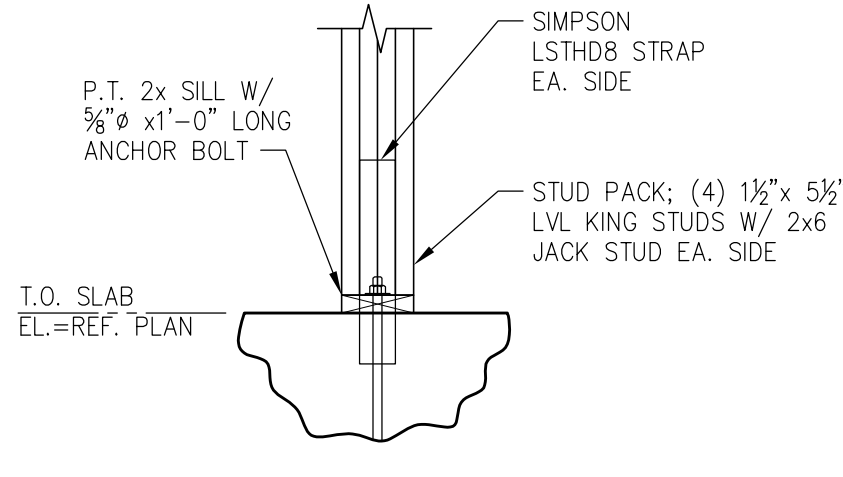


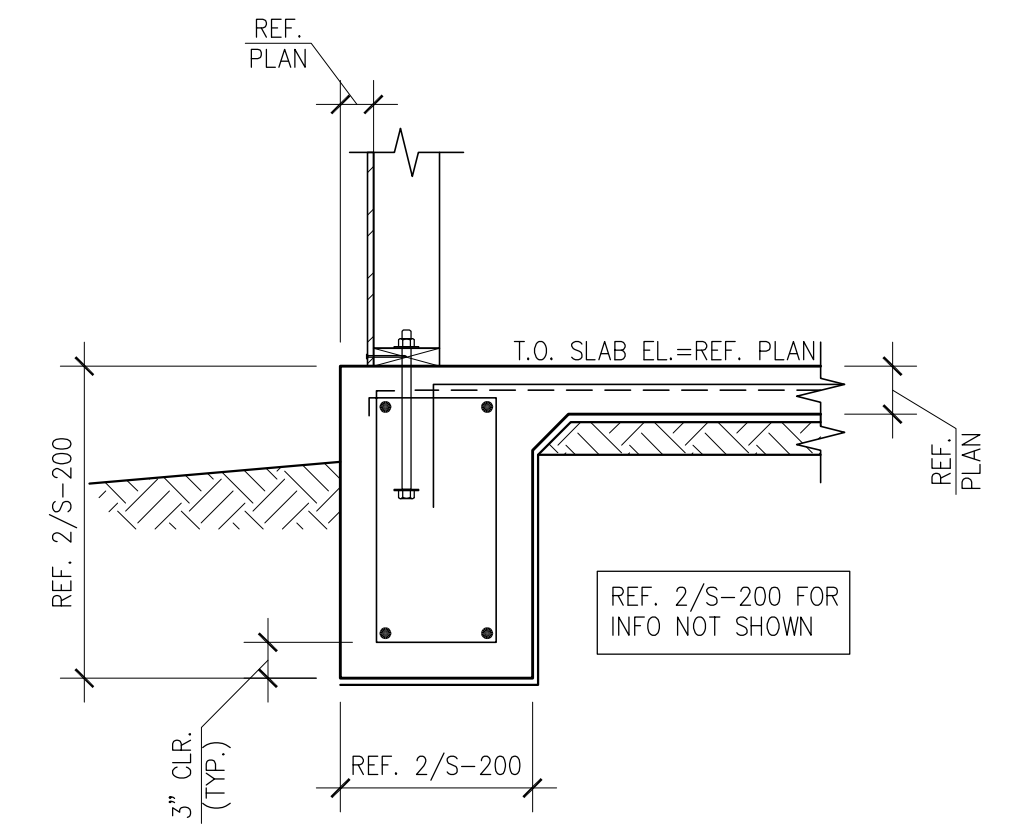
SECTION 20
SCALE: 3/4"=1'-0" S-200



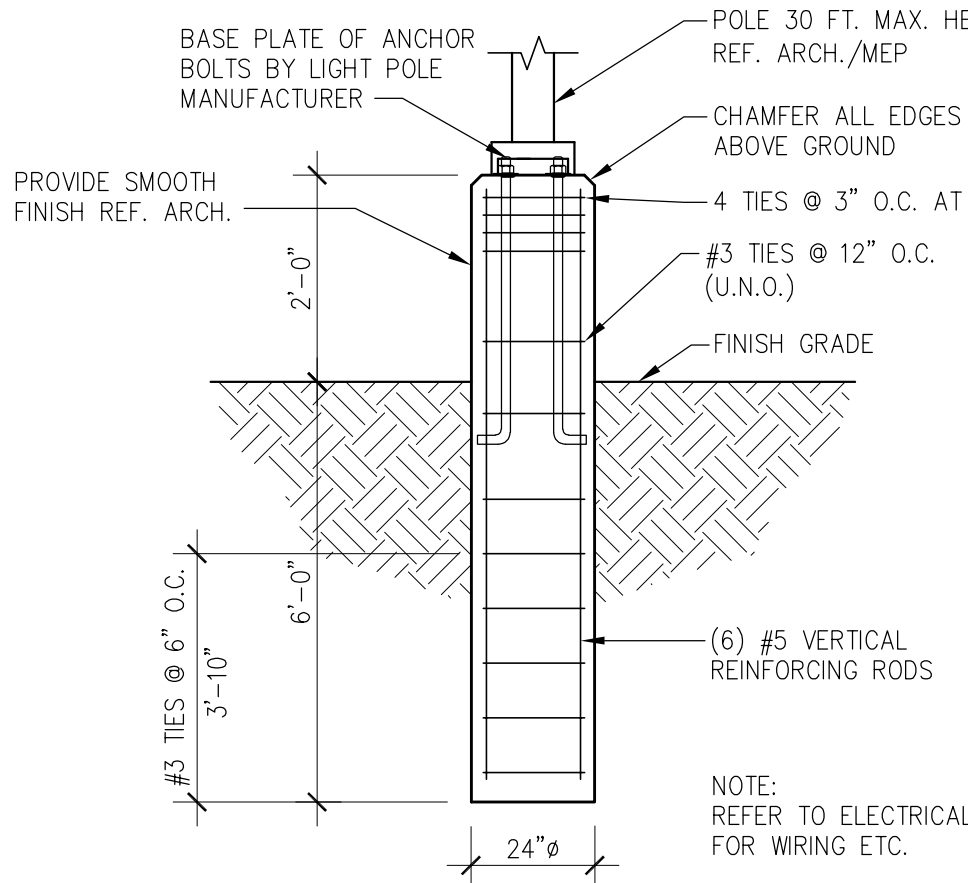
SECTION 16
SCALE: N.T.S. S-200



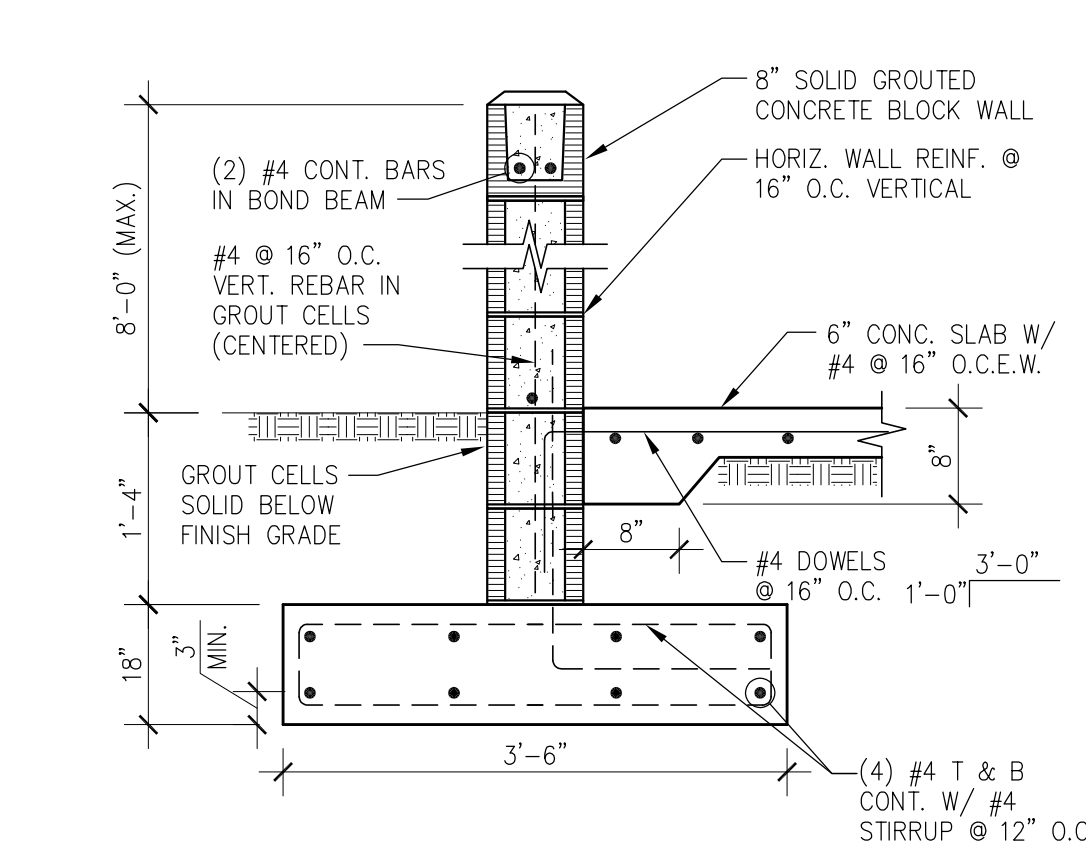
SECTION 12
SCALE: 3/4"=1'-0" S-200



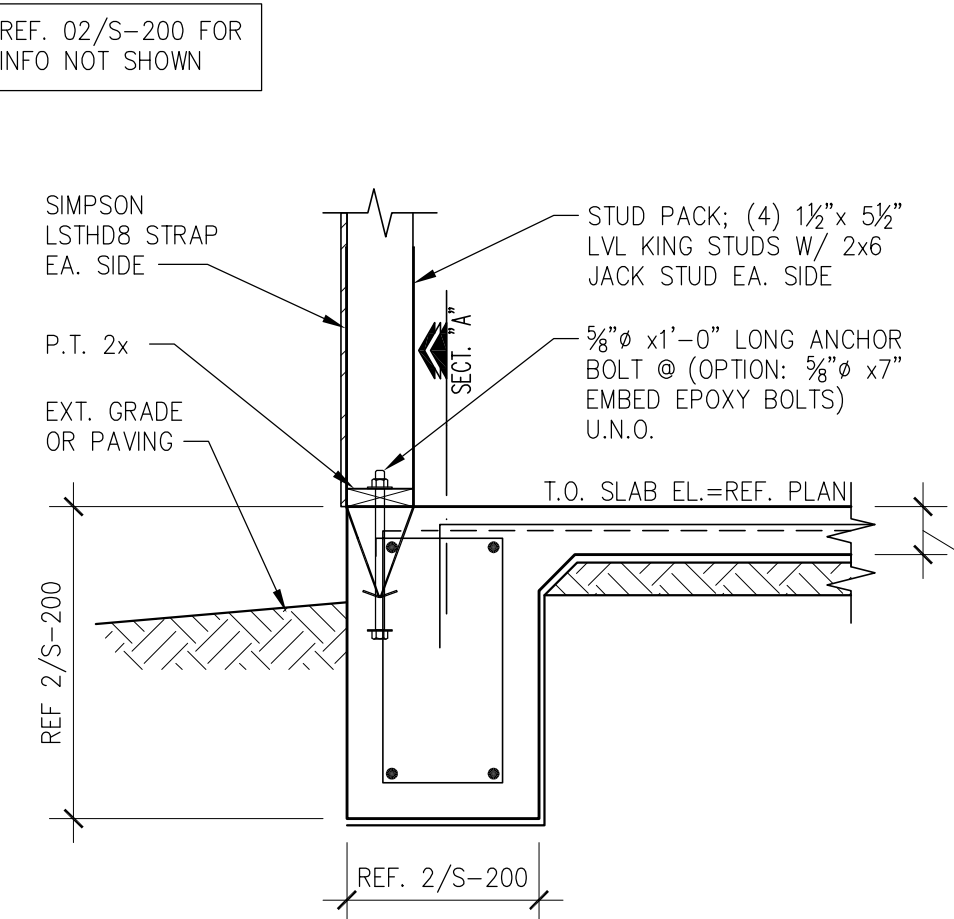
SECTION 19
SCALE: 3/4"=1'-0" S-200



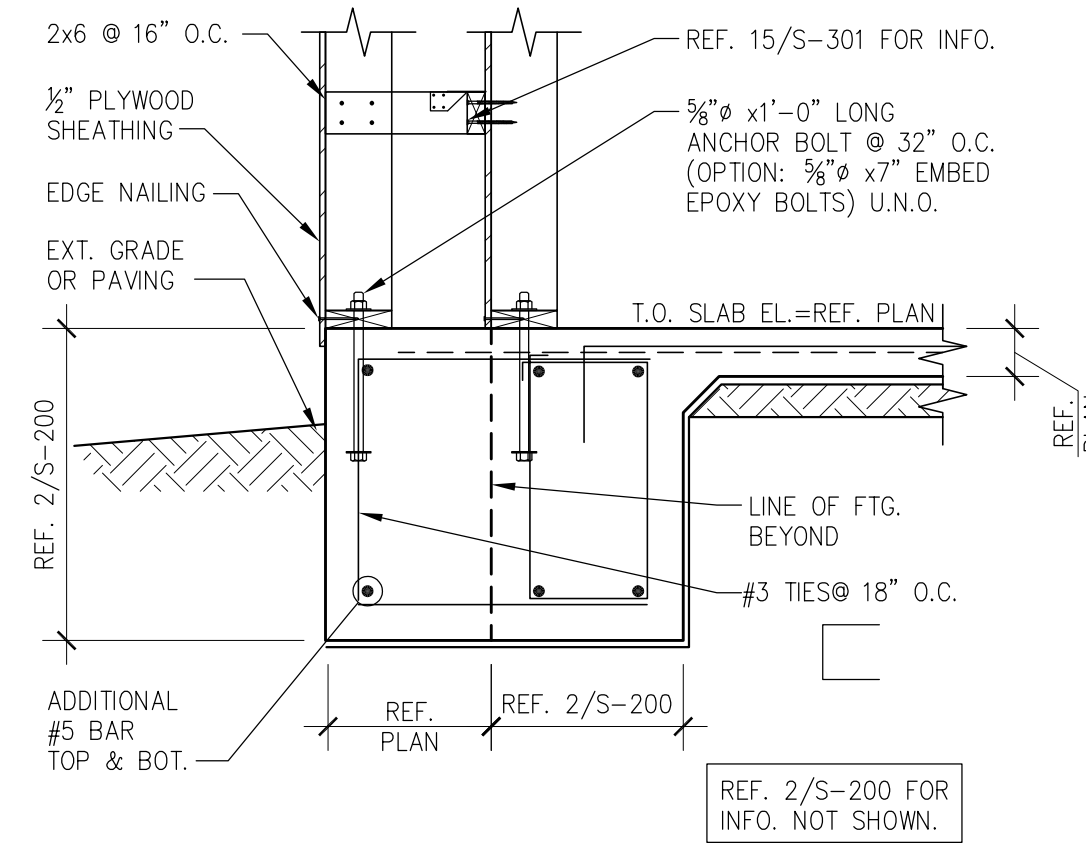
SECTION 15
SCALE: N.T.S. S-200



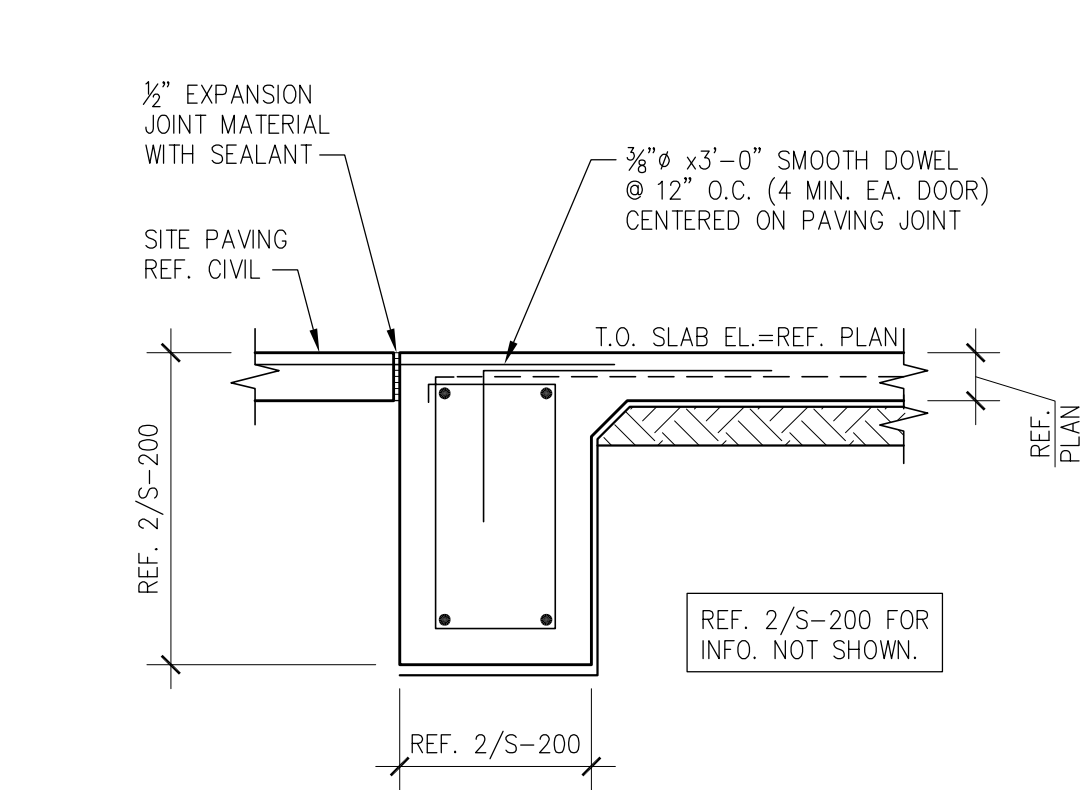
SECTION 11
SCALE: 3/4"=1'-0" S-200



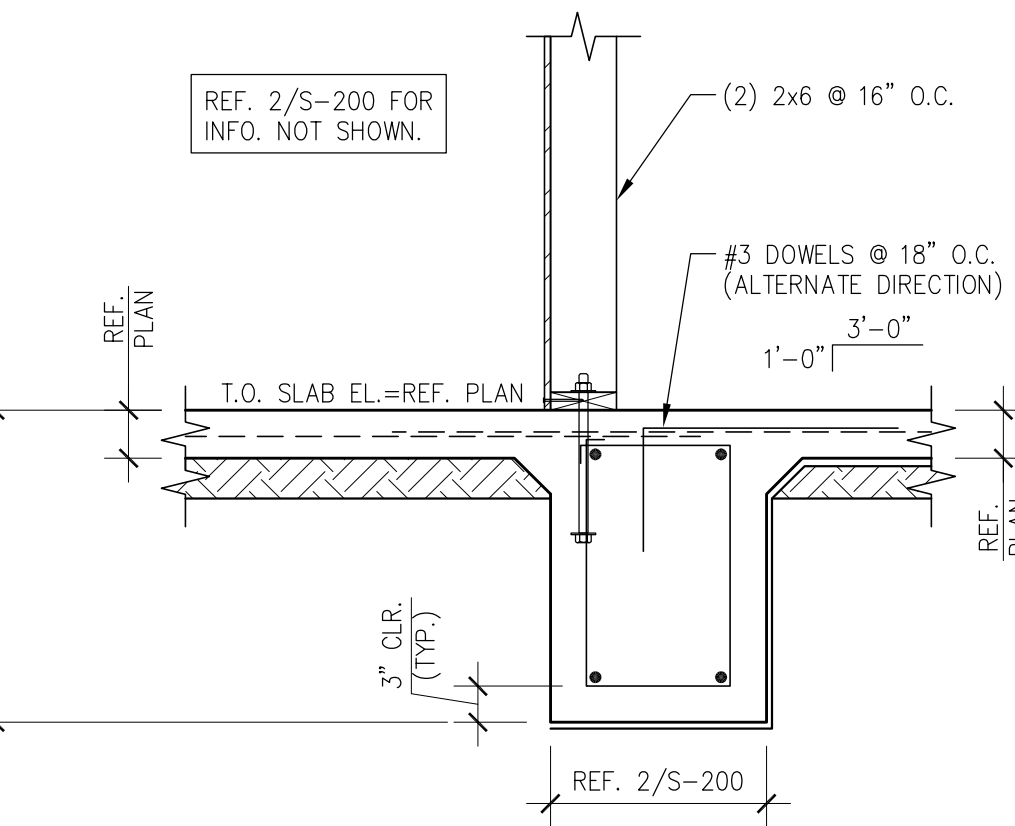
SECTION 7
SCALE: 3/4"=1'-0" S-200



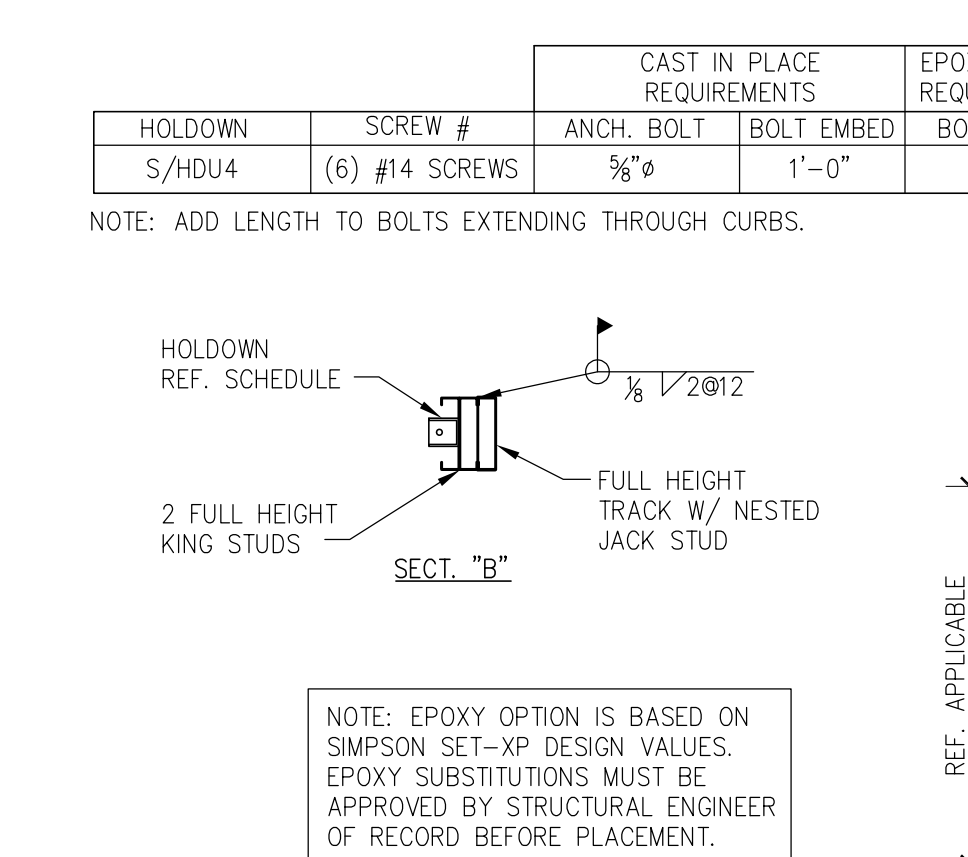
SECTION 4
SCALE: 3/4"=1'-0" S-200



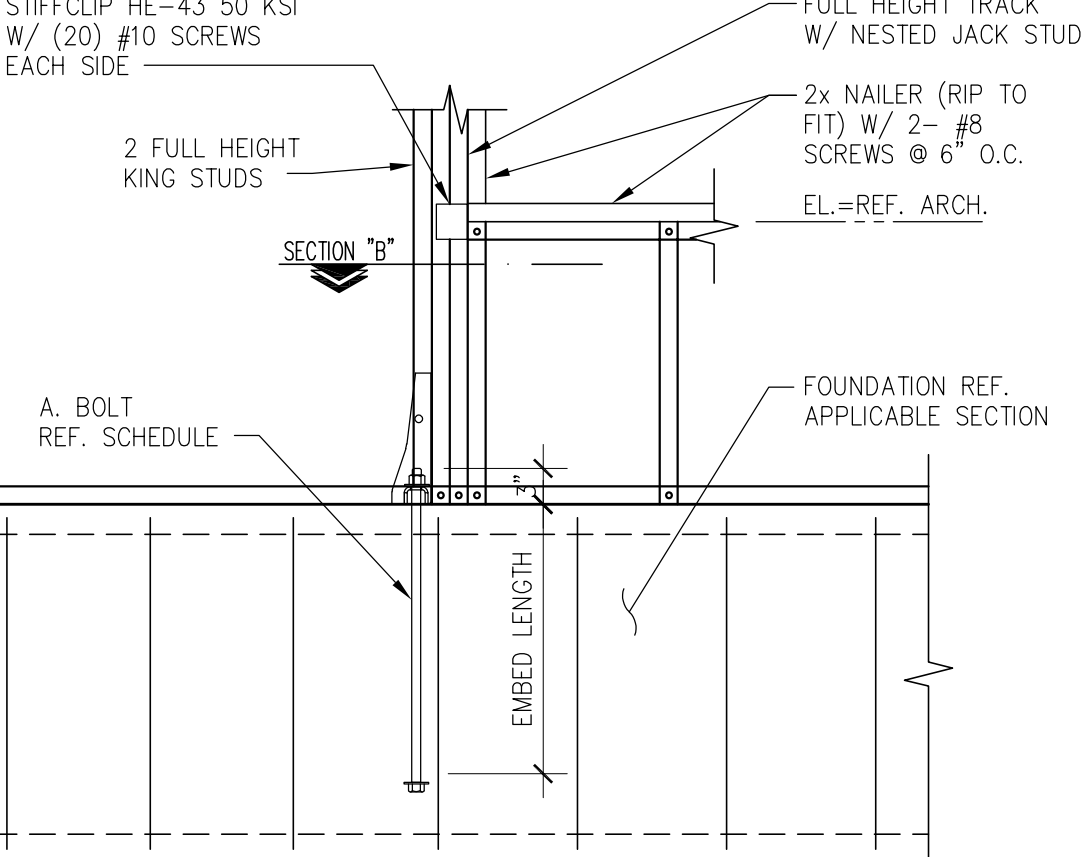
SECTION 3
SCALE: 3/4"=1'-0" S-200



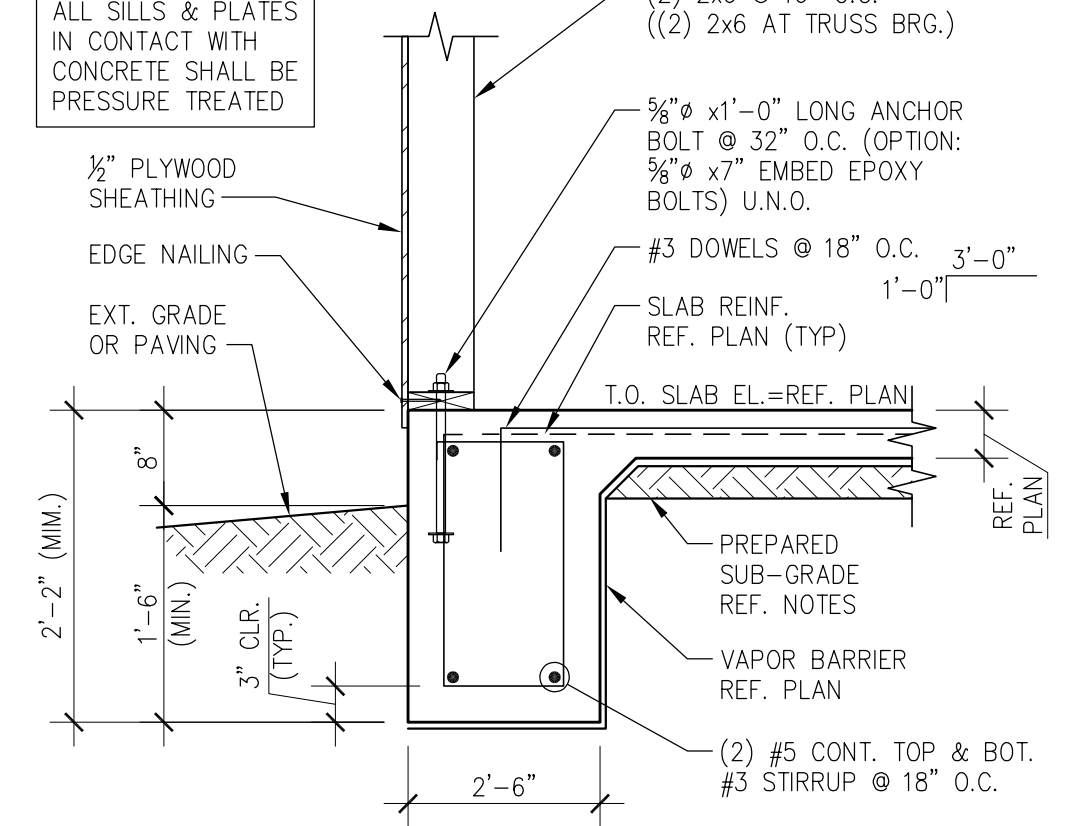
SECTION 18
SCALE: 3/4"=1'-0" S-200



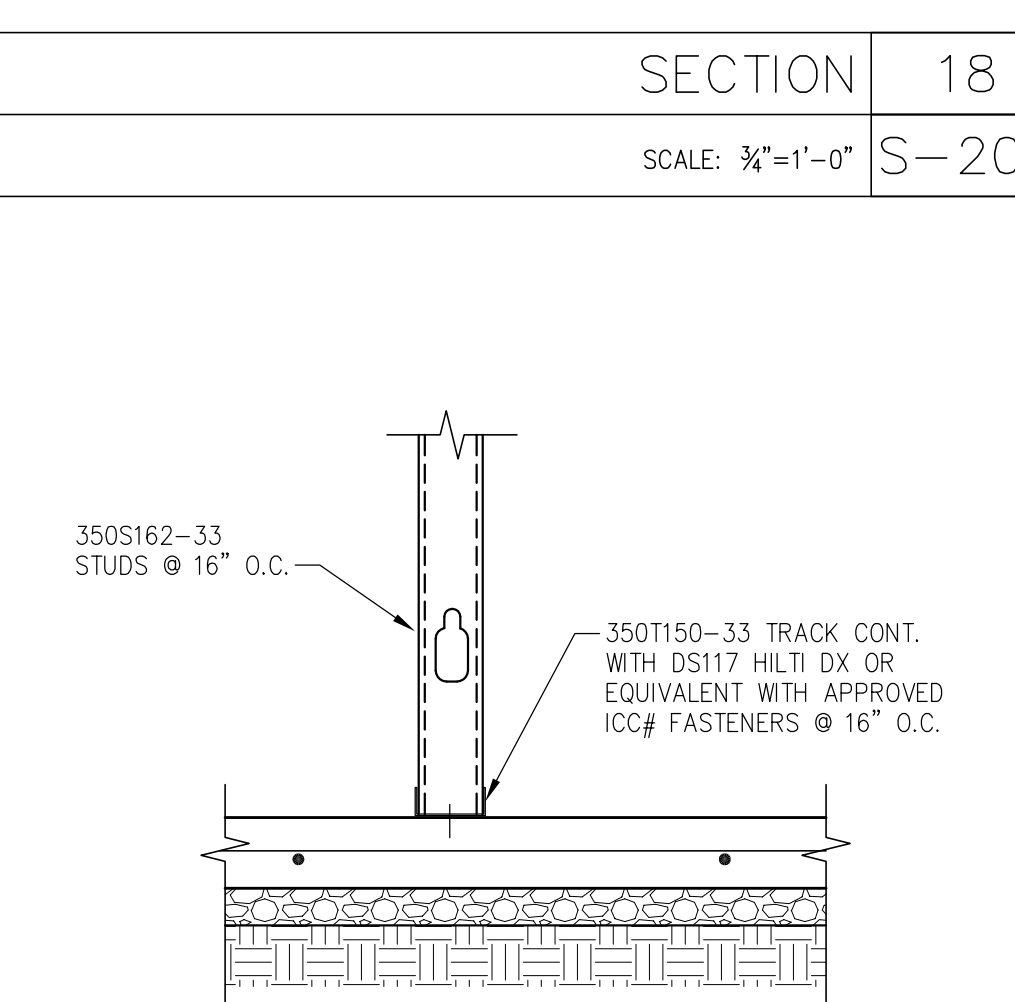
SECTION 10
SCALE: 3/4"=1'-0" S-200



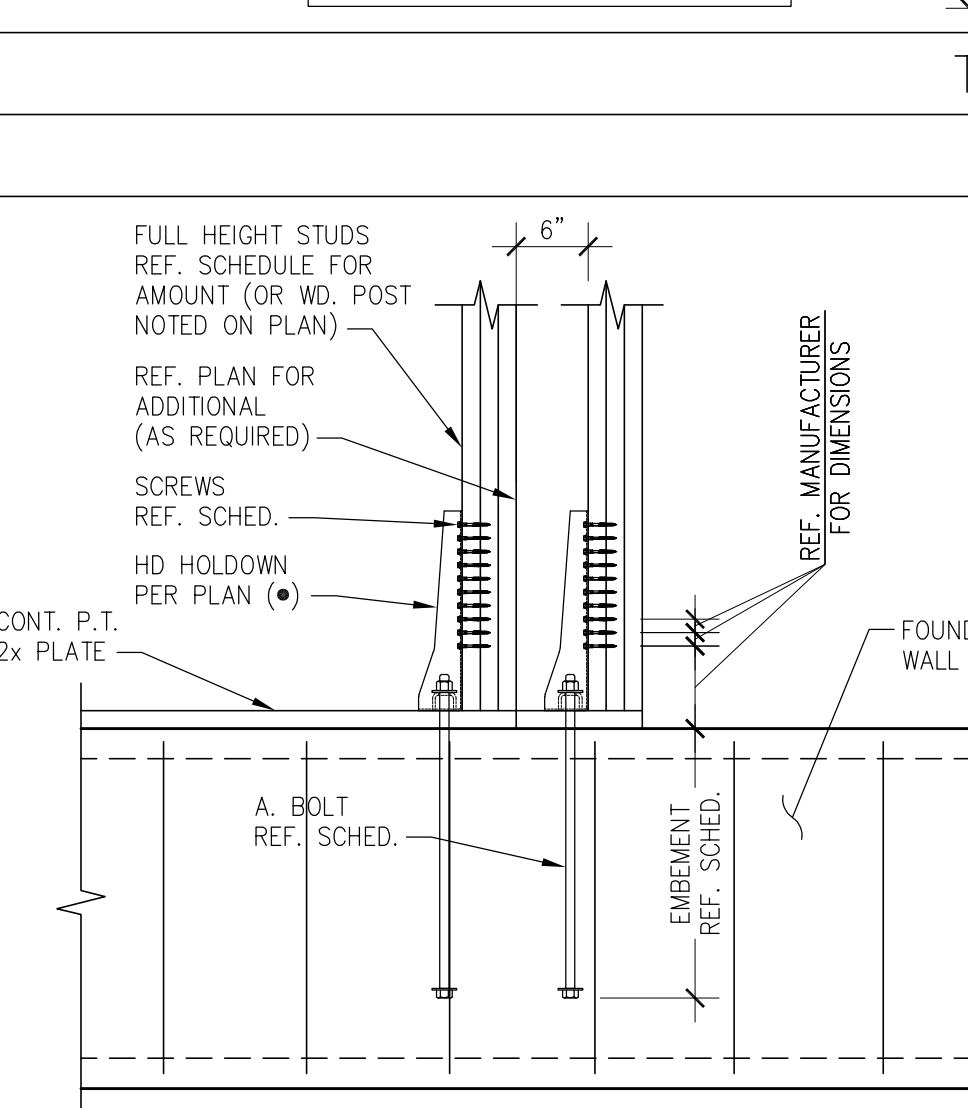
SECTION 6
SCALE: 3/4"=1'-0" S-200



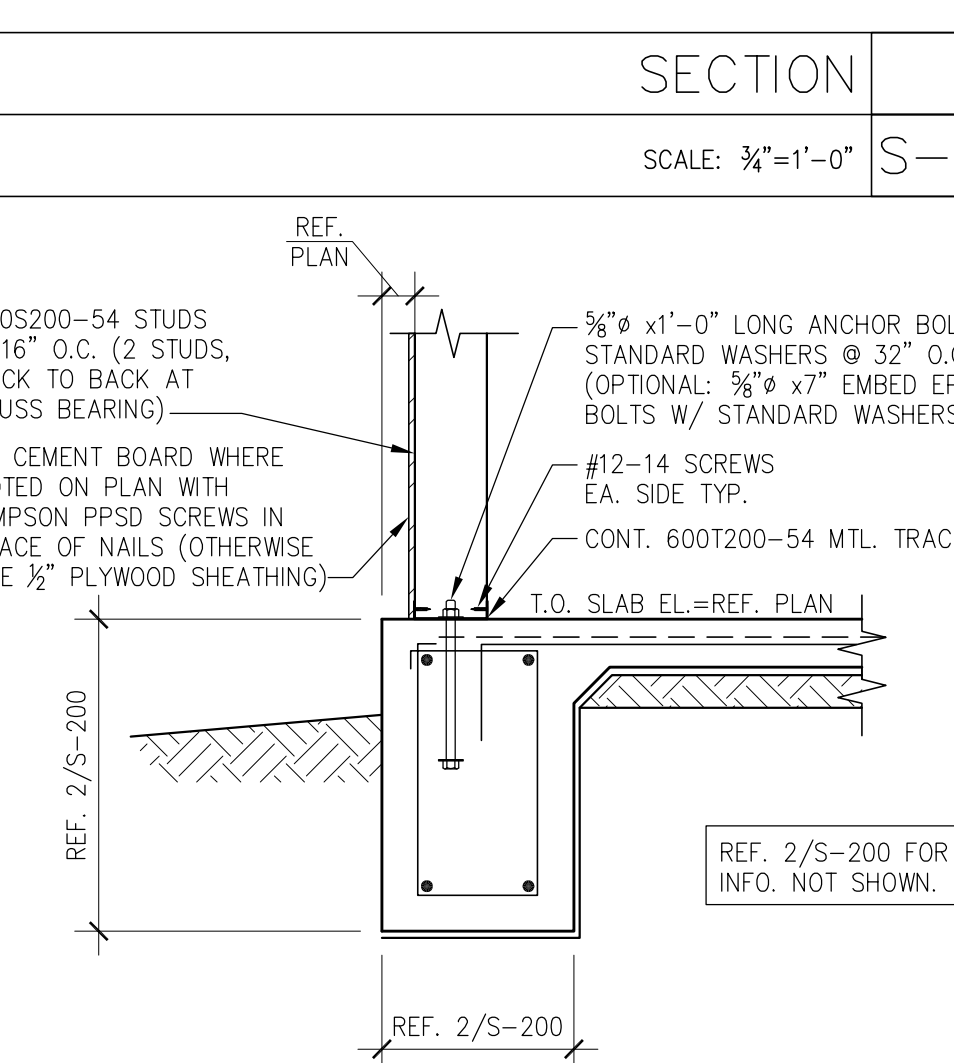
SECTION 2
SCALE: 3/4"=1'-0" S-200



SECTION 17
SCALE: N.T.S. S-200



SECTION 9
SCALE: N.T.S. S-200



SECTION 5
SCALE: 3/4"=1'-0" S-200



PANDA RESTAURANT GROUP INC.
1683 Walnut Grove Ave.
Rosemead, California 91770
Telephone: 626.799.9898
Facsimile: 626.372.8288

All ideas, designs, arrangement and plans indicated or represented by this drawing are the property of Panda Express Inc. and were created for use on this specific project. None of these ideas, designs, arrangements or plans may be used by or disclosed to any person, firm, or corporation without the written permission of Panda Express Inc.

REVISIONS:

| | |
|---|-----------------------------|
| 1 | 04.29.2021 ISSUE FOR PERMIT |
| 2 | 06.04.2021 ISSUE FOR BID |
| | |
| | |
| | |
| | |
| | |
| | |
| | |
| | |

ISSUE DATE:

| | |
|---|-----------------------------|
| 1 | 04.29.2021 ISSUE FOR PERMIT |
| 2 | 06.04.2021 ISSUE FOR BID |

DRAWN BY:

PANDA PROJECT #: - S8-22-D8135
C&P PROJECT #: - 2200775



2600 Maitland Center Pkwy, Maitland, FL 32751
P (407) 661-9100
F (407) 661-9101
Panda Express Foundation (P&E) C00026

06.04.2021

PANDA EXPRESS

TRUE WARM AND WELCOME 2300
SKYBROOKE BOULEVARD & STATE ROAD 54
LUTZ, FL 33558

S-200

FOUNDATION DETAILS

TRUE WARM & WELCOME 2300 RA