

SURVEYOR'S CERTIFICATE

This map represents a survey made by me or under my direction in conformity with the requirements of Chapter 15 of Division 3 of the Business and Professions Code at the request of the Lutheran Church, Missouri Synod, in April, 1963.

DONALD G. MACKAY, R.C.E. 7184

Donald G. Mackay

COUNTY SURVEYOR'S CERTIFICATE

This map has been examined for conformance with the requirements of Chapter 15 of Division 3 of the Business and Professions Code this 3rd day of June, 1963.

JAMES T. POTT, COUNTY SURVEYOR, Santa Clara County, California

By: DEPUTY *James A. Widen*

RECORDER'S CERTIFICATE

FILE NO. 2414260 FEE \$ 5.00 PAID
Filed for record this 3rd day of June, 1963, at 2:49 P.M., in Book 161 of Maps at page 55, at the request of Mackay & Somps.

PAUL R. TEILH, COUNTY RECORDER, Santa Clara County

by: DEPUTY *Donald E. Rhin*

BASIS OF BEARINGS, NOTES & LEGEND

The bearing "S. 32° 27' W." along the Northwest line of that certain 4.051± AC. parcel shown on a Record of Survey for the Lutheran Church, filed May 3, 1961, in Book 132 of Maps at page 26, Santa Clara County Records, was taken as the basis of bearings shown on this map.

All distances and dimensions are given in feet and decimals thereof.
○ indicates 3/4" iron pipe set. ● indicates 3/4" iron pipe found unless noted otherwise.

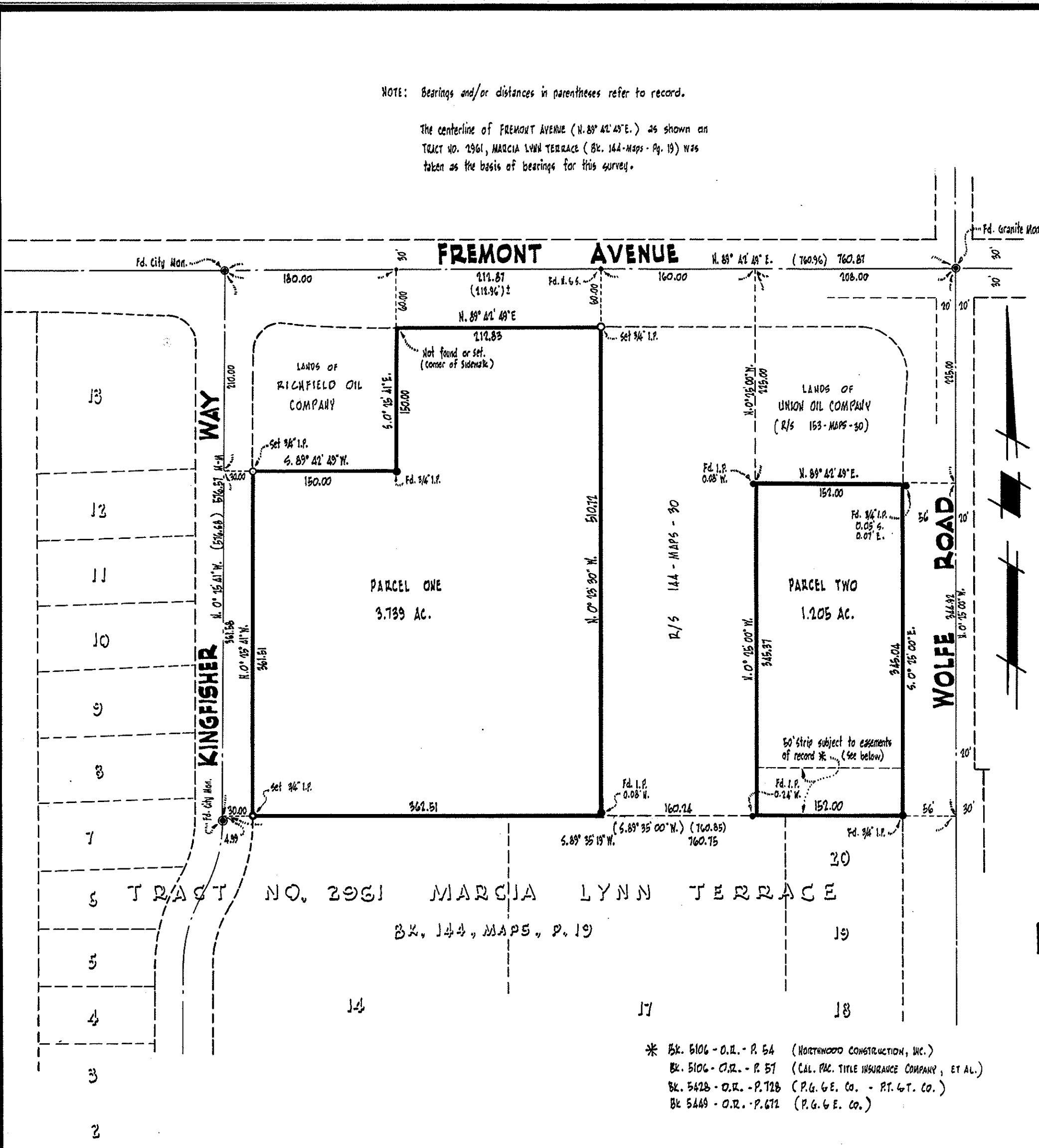
RECORD OF SURVEY

OF A PORTION OF THAT CERTAIN 4.051 ACRE PARCEL SHOWN ON A RECORD OF SURVEY FOR LUTHERAN CHURCH, FILED IN BK. 132, MAPS, P. 26, S.C. CO. RECS., AND PART OF SEC. 33, T. 6 S., R. 1 W., M.D.M. SCALE: 1"=100' AND LYING ENTIRELY WITHIN THE CORPORATE LIMITS OF THE CITY OF APRIL, 1963

SANTA CLARA, CALIFORNIA

MACKAY & SOMPS CIVIL ENGINEERS 347 COMMERCIAL ST. SAN JOSE

2462 (2220)



SURVEYOR'S CERTIFICATE

This map represents a survey made by me or under my direction in conformity with the requirements of Chapter 15 of Division 3 of the Business & Professions Code at the request of U.G. MARKET CENTER, a co-Partnership, in May, 1963.

DONALD G. MACKAY, R.C.E. 7184

Donald G. Mackay

COUNTY SURVEYOR'S CERTIFICATE

This map has been examined for conformance with the requirements of Chapter 15 of Division 3 of the Business & Professions Code this 3rd day of June, 1963.

JAMES T. POTT, COUNTY SURVEYOR, SANTA CLARA COUNTY

By: DEPUTY *James A. Widen*

RECORDER'S CERTIFICATE

FILE NO. 2414261 FEE \$ 5.00 PAID
FILED FOR RECORD THIS 3rd DAY OF June, 1963, AT 2:49 P.M., IN BOOK 161 OF MAPS AT PAGE 55, AT THE REQUEST OF MACKAY & SOMPS.

PAUL R. TEILH, COUNTY RECORDER, SANTA CLARA COUNTY

by: DEPUTY *Donald E. Rhin*

RECORD OF SURVEY

OF A PORTION OF LOT 1 OF THE QUITO RANCHO AND LYING ENTIRELY WITHIN THE CORPORATE LIMITS OF THE CITY OF

SUNNYVALE, CALIFORNIA

SCALE: 1"=100'

MAY, 1963

MACKAY & SOMPS - CIVIL ENGINEERS
SAN JOSE, CALIFORNIA

1384