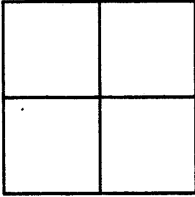


Document Number CR 1571
 City of BERKELEY County of ALAMEDA, California
 Brief Legal Description CROSS IN CONCRETE IN STREET ON EUCLID AVE.
IN FRONT OF #960 EUCLID AVE.



CORNER TYPE

Government Corner ☐ Control ☐
 Meander ☐ Property ☒
 Rancho ☐ Other ☐
 Date of Survey AUGUST 27, 2001

COORDINATES (Optional)

N. _____
 E. _____
 Zone _____ NAD27 ☐ NAD83 ☐
 NAD83 Epoch _____
 Elev. _____
 VERT. DATUM: NGVD29 ☐ NAVD88 ☐
 MEAS. UNITS: METRIC ☐ IMPERIAL ☐

Corner — Left as found ☒ Found and tagged ☐ Established ☐ Reestablished ☐ Rebuilt ☐

Identification and type of corner found: Evidence used to identify or procedure used to establish or reestablish the corner:

CROSS IN CONCRETE IDENTIFIED BY CITY OF BERKELEY
AS HORIZONTAL CONTROL POINT R502, NO.5756

THIS POINT WAS REFERENCED PRIOR TO CONSTRUCTION OF
A PROJECT IN THE VICINITY.

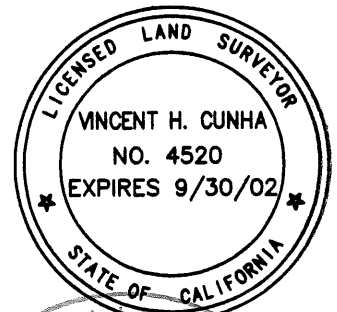
A description of the physical condition of the monument as found and as set or reset:

CROSS IN CONCRETE PAVEMENT

SURVEYOR'S STATEMENT

This Corner Record was prepared by me or under my direction in conformance with
 the Land Surveyors' Act on AUGUST 27 20 01.

Signed Vincent H. Cunha P.L.S. or R.C.E. No. LS 4520
 VINCENT H. CUNHA



COUNTY SURVEYOR'S STATEMENT

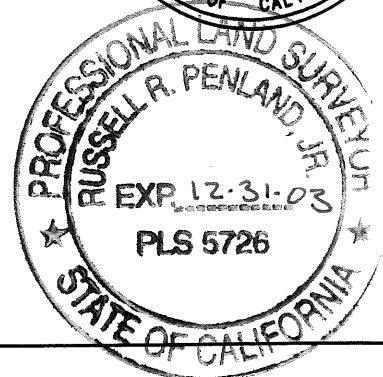
This Corner Record was received 10-4-01

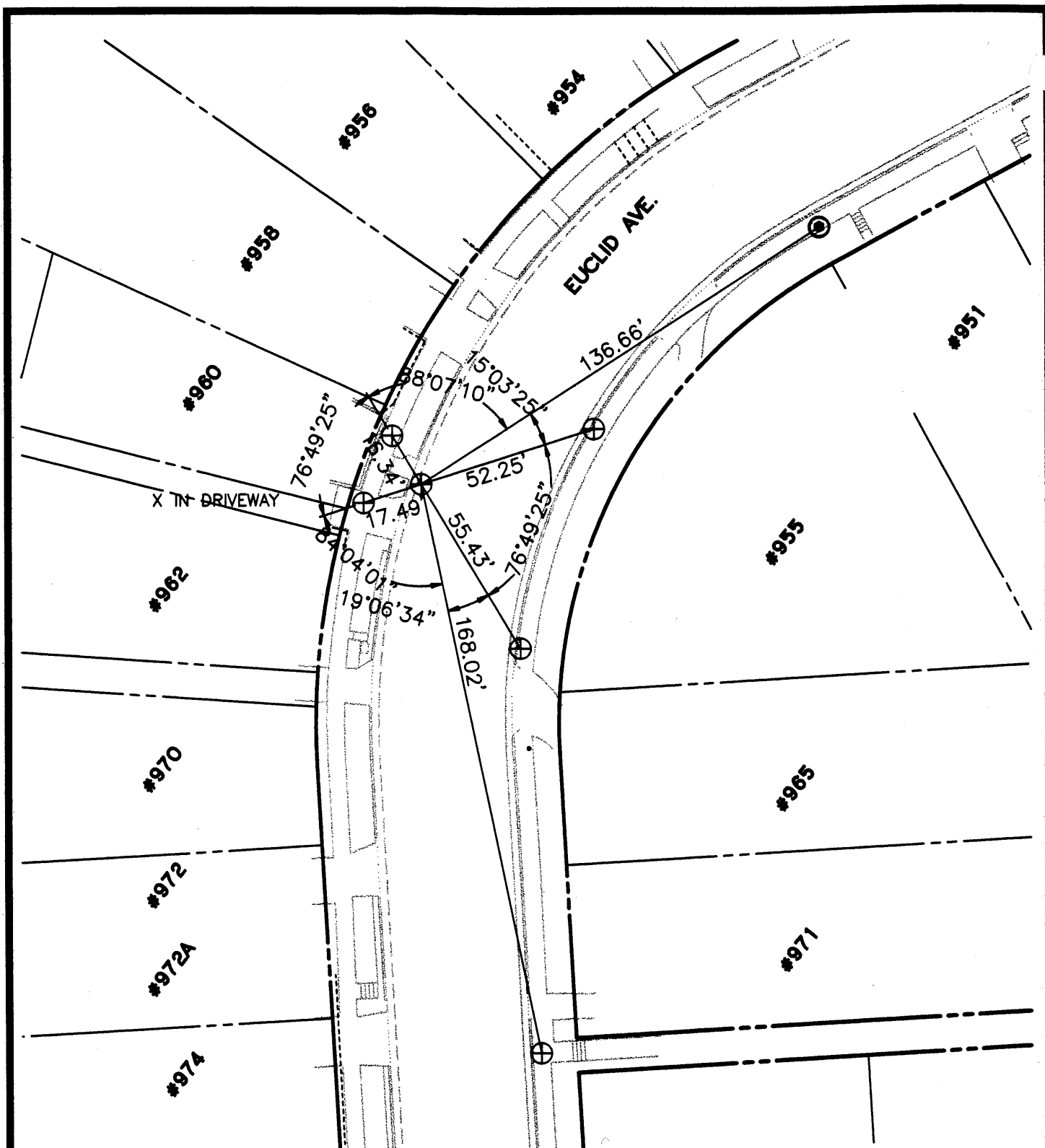
examined and filed 12-5-01

Signed Russell A. Penland, Jr. P.L.S. or R.C.E. No. 5726

Title COUNTY SURVEYOR

County Surveyor's Comment _____





LEGEND

- ⊙ FOUND STANDARD STREET MONUMENT
- ⊕ FOUND NAIL (NO TAG)
- ⊕ FOUND CUT CROSS ON SIDEWALK, UNLESS NOTED OTHERWISE



SCALE: 1"=40'