

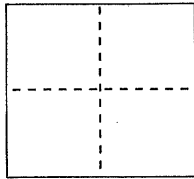
BK 16 Pg 72

CORNER RECORD

Document Number CR 1978

City of Oakland County of Alameda, California

Brief Legal Description Monument at intersection of 47th Ave. and Melrose Ave., Fruitvale Blvd. Tract



CORNER TYPE

Government Corner ☐ Control ☒
Meander ☐ Property ☒
Rancho ☐ Other ☐

Date of Survey 26 July 2002

COORDINATES (Optional)

N. _____
E. _____
Zone _____ NAD27 ☐ NAD83 ☐
NAD83 Epoch _____
Elev. _____
Vert. Datum: NGVD29 ☐ NAVD88 ☐
Meas. Units: Metric ☐ Imperial ☐

Corner - Left as found ☐ Found and tagged ☒ Established ☐ Reestablished ☐ Rebuilt ☐

Identification and type of corner found: Evidence used to identify or procedure used to establish or reestablish the corner:
Monument at intersection of 47th Ave.; 4' NW of centerline and at centerline of Melrose Ave. Monument is not
shown on Fruitvale Blvd. Tract Map. Monument was referenced with nails and EBMUD monument R.P. tags.
Reference: EBMUD fieldbook #4192, page 26, July 26 2002.

A description of the physical condition of the monument as found and as set or reset:
Pin monument in standard street casing, found in good condition.

SURVEYOR'S STATEMENT

This Corner Record was prepared by me or under my direction in conformance with
the Professional Land Surveyor's Act on Oct. 6 2003

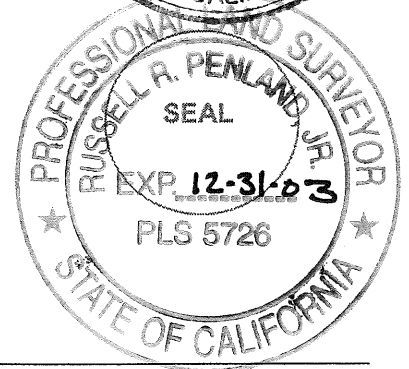
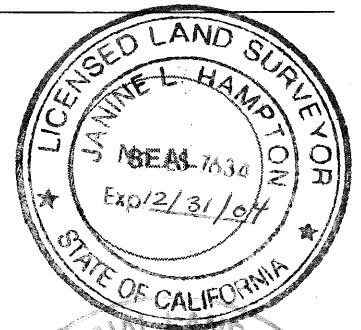
Signed Janine L Hampton P.L.S or R.C.E. No. 7634

COUNTY SURVEYOR'S STATEMENT

This Corner Record was received 10-07-03
and examined and filed 11-17-03

Signed Russell R. Penland, Jr. P.L.S or R.C.E. No. 5726
Title COUNTY SURVEYOR

County Surveyor's Comment: _____



FRUITVALE BOULEVARD TRACT

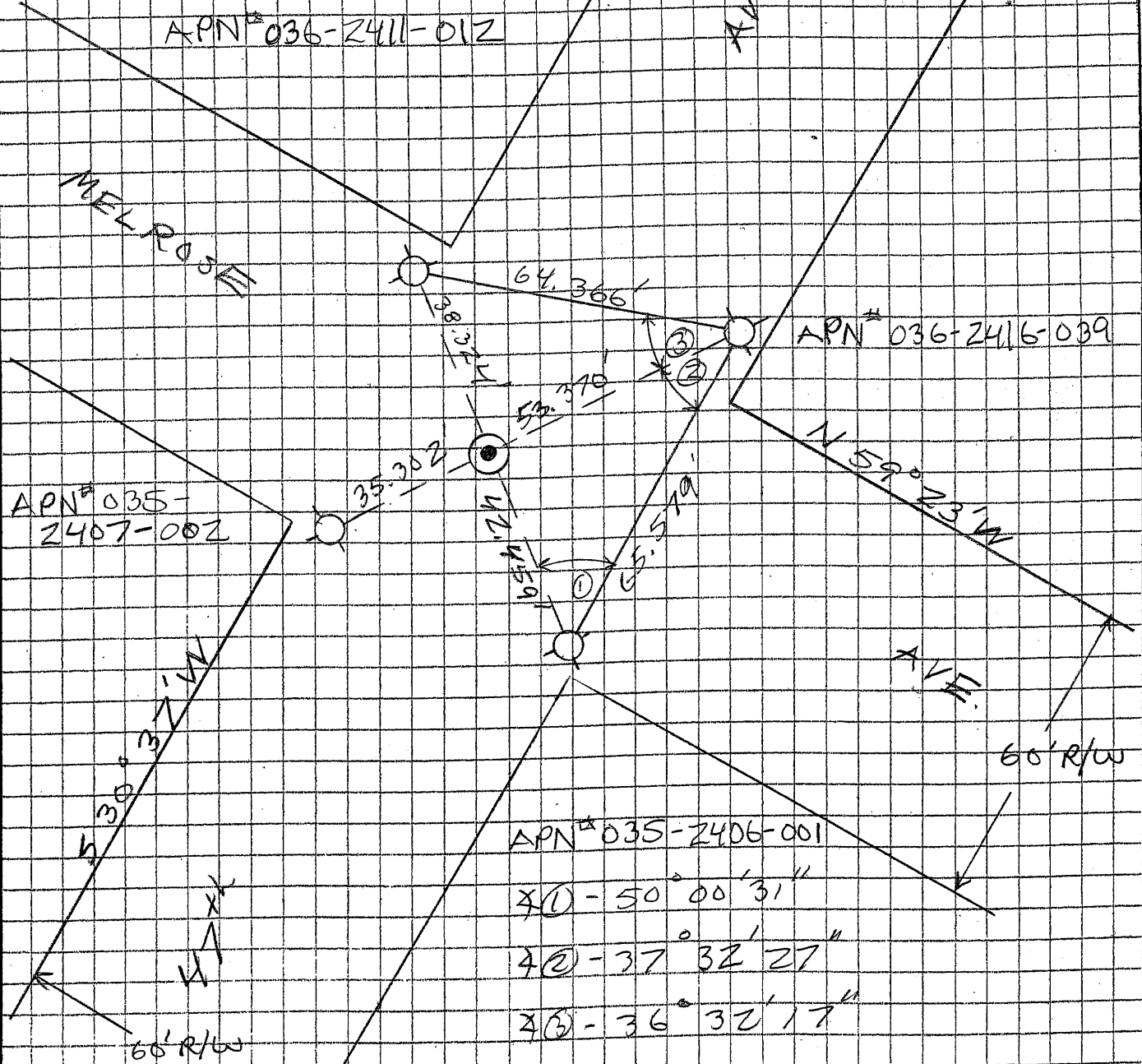
OAKLAND, ALAMEDA, Co.

N.T.S.

LEGEND

⊙ F.D. MONUMENT

○ SET NAIL & EDMUND MON. R.P. TAG



* REF EDMUND FB 4192; PG 26; 26 JULY 02; W. SUNG