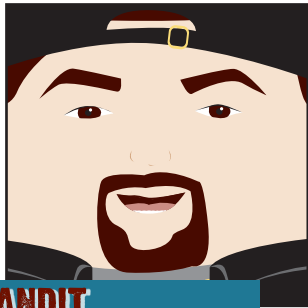
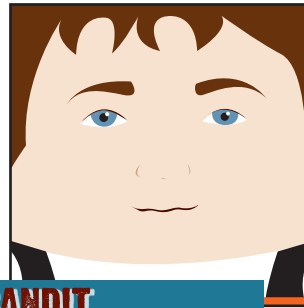


BUILD YOUR OWN DEADLIEST CATCH PLAYSET!

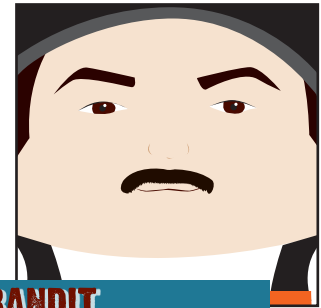
F/V TIME BANDIT



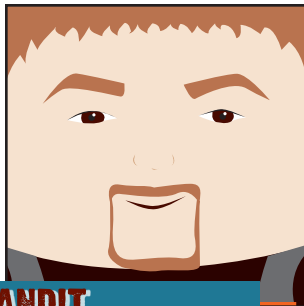
TIME BANDIT
JOHNATHAN HILLSTRAND
Captain



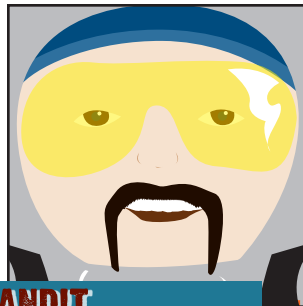
TIME BANDIT
ANDY HILLSTRAND
Co-Captain



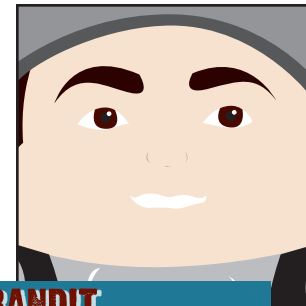
TIME BANDIT
NEAL HILLSTRAND
Deckhand



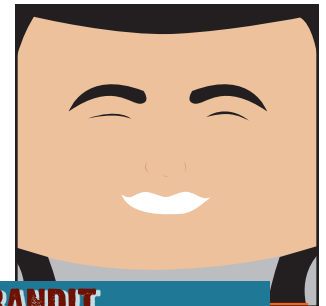
TIME BANDIT
SCOTT HILLSTRAND
Deckhand



TIME BANDIT
RUSS NEWBERRY
Deckhand



TIME BANDIT
SHEA LONG
Deckhand



TIME BANDIT
EDDIE UWEKOOLANI
Deckhand

This playset contains: (1) Time Bandit Ship, (1) Rusty Old Pickup Truck, (1) Captain Johnathan Hillstrand, (1) Co-Captain Andy Hilstrand, (1) Neal Hillstrand, (1) Scott Hillstrand, (1) Russ Newberry, (1) Shea Long, and (1) Eddie Uwekoolani. Some assembly required.

GETTING STARTED:

The following toys are considered “flat pack toys”, a PDF to be printed on 8 1/2” x 11” printer paper (preferably heavy weight matte paper or card stock). Then, by cutting the solid lines, folding the dotted lines, and adhering the designated tabs with tape or glue, you build all sorts of fun little objects.

YOU WILL NEED:

A printer, paper, scissors, glue and/or tape, and 5 - 15 minutes per toy of build time.

DISCLAIMER:

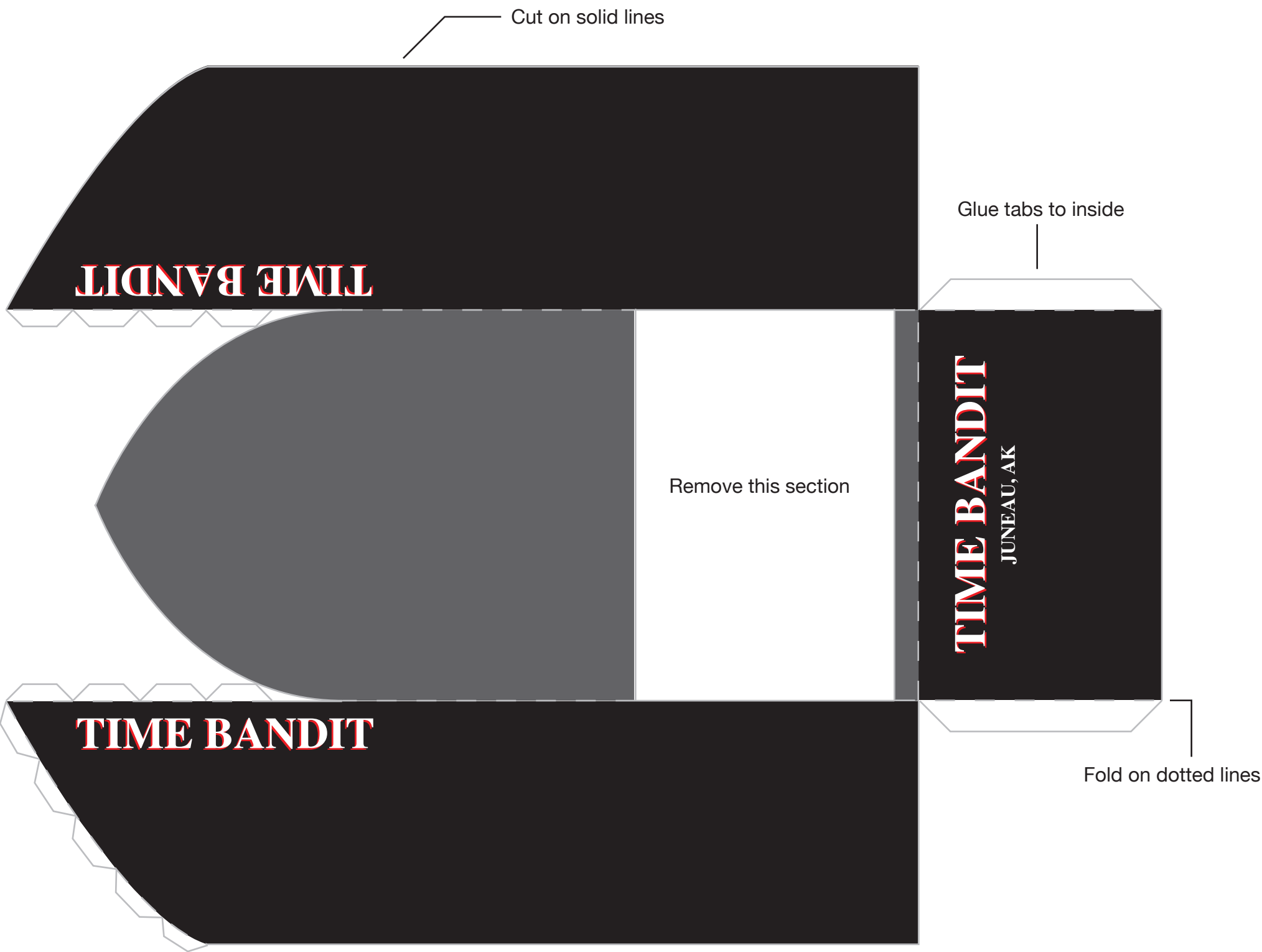
This is all in good fun, started for a giggle with my friends. It’s what designers do when they’re bored . . . *Deadliest Catch*, included personalities and trademarks are property of the appropriate owners (so, I’m not a legal copywriter). I don’t know anyone involved and this is just fun. Not to be used for sale or profit.

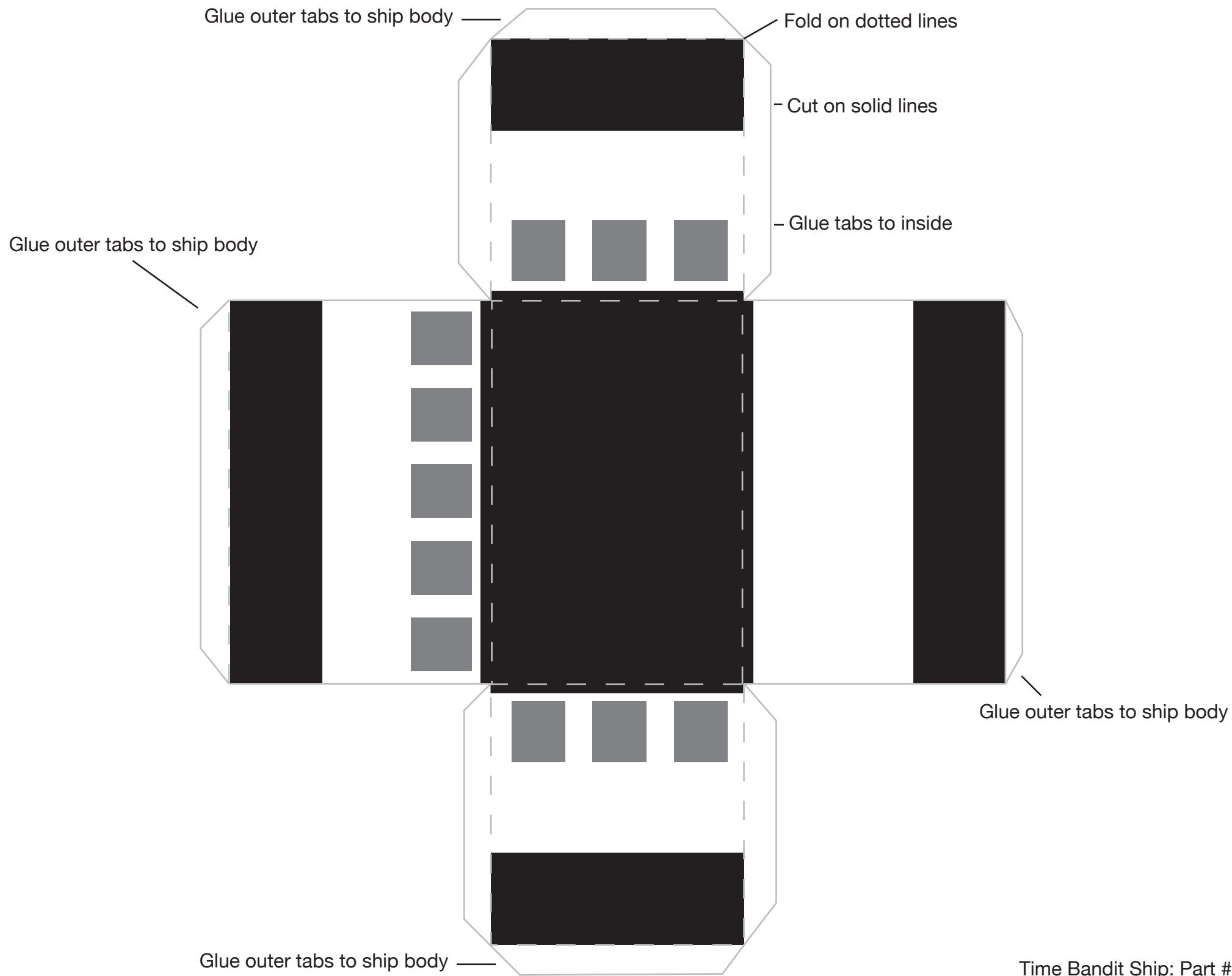


Truck detail



Completed playset

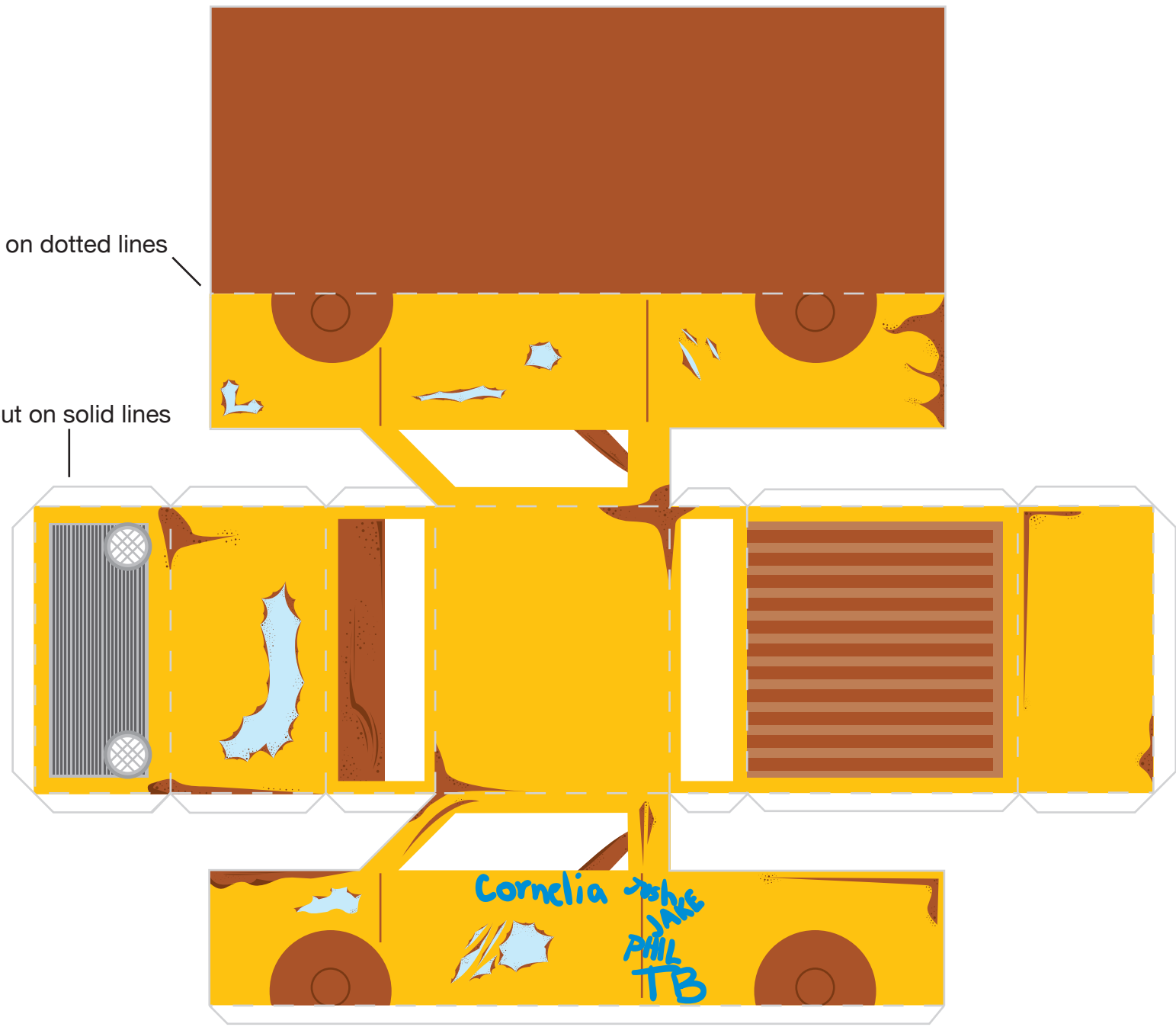


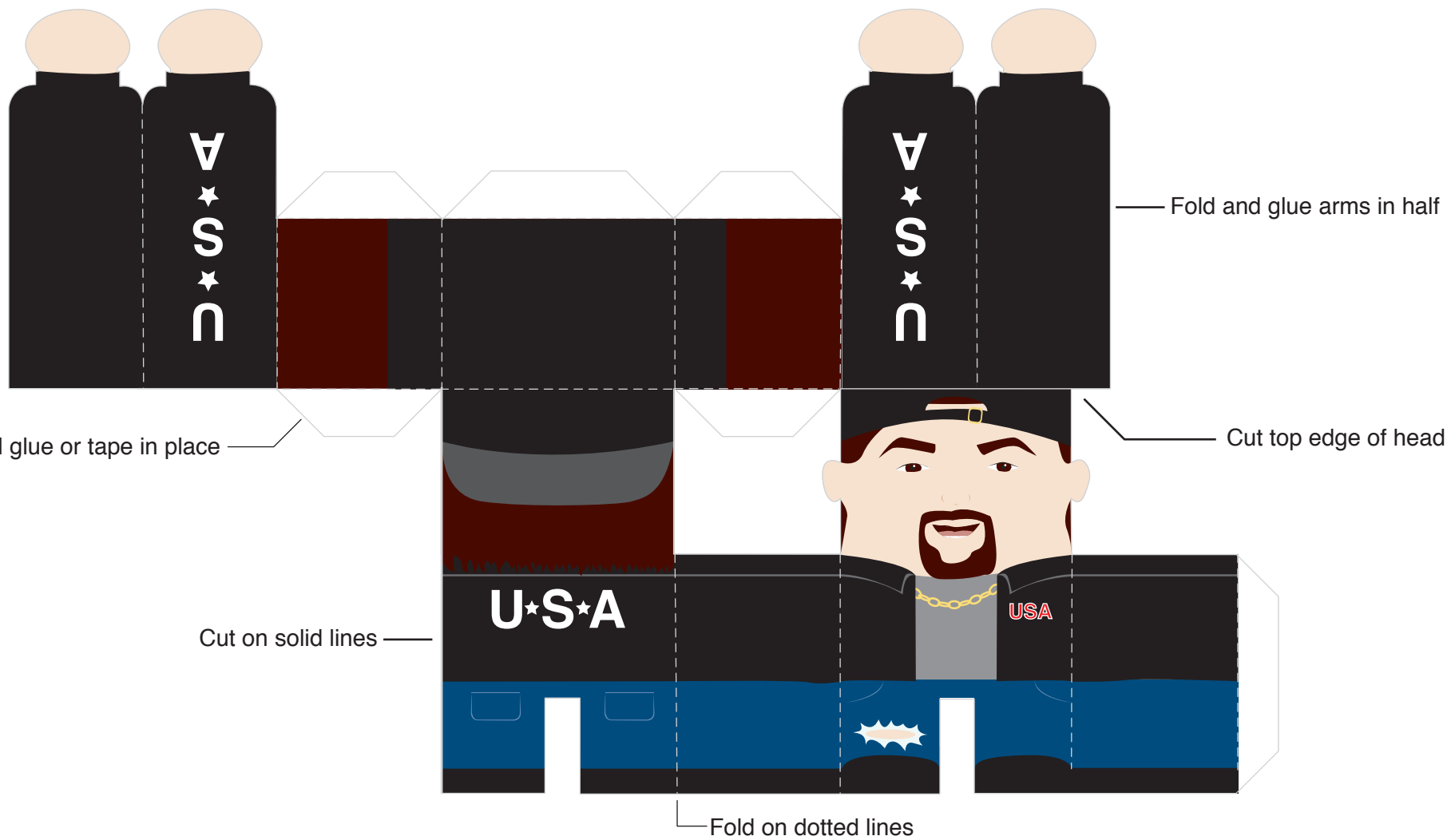


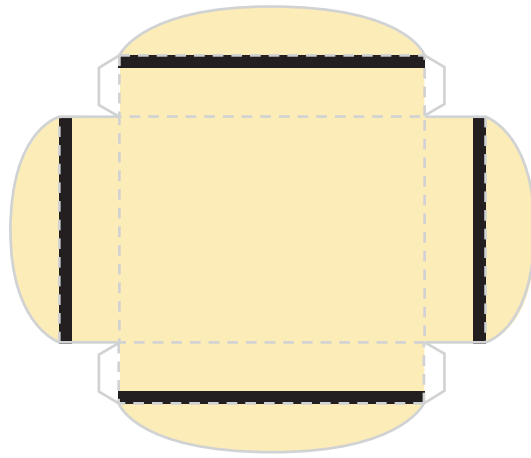
Once assembled, use palm of hand to smash for realistic effect.

Fold on dotted lines

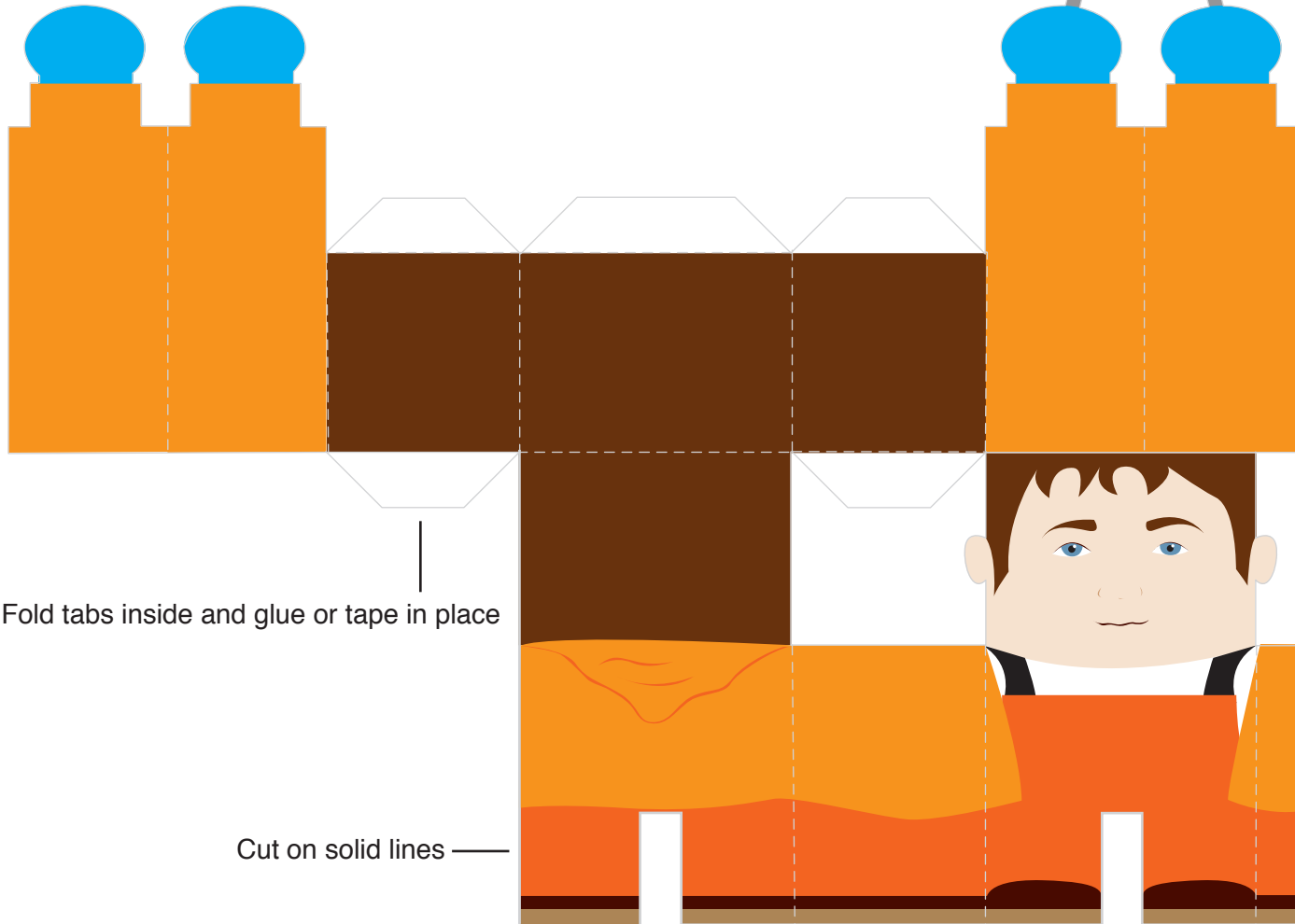
Cut on solid lines







— Construct hat separately and place on head



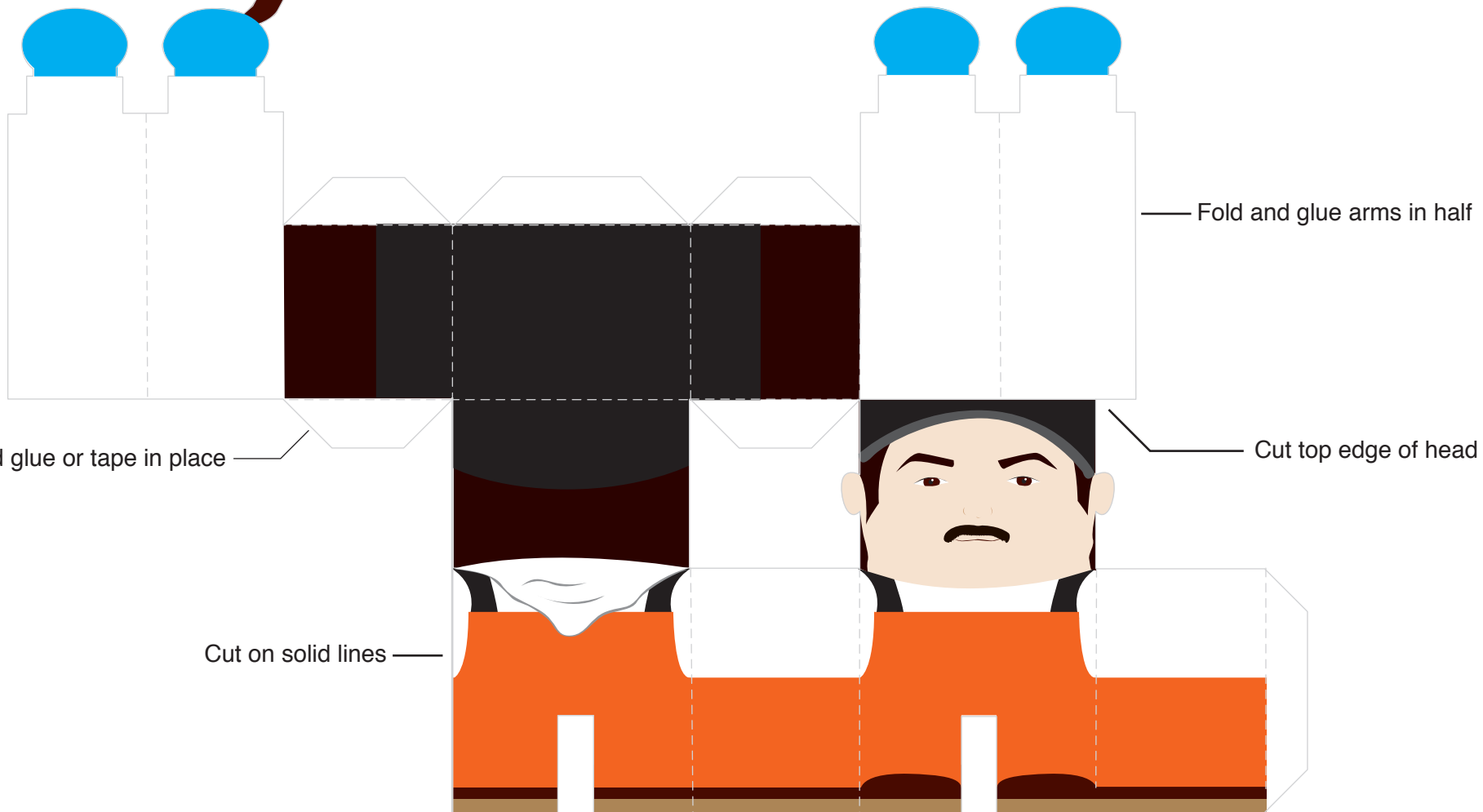
Fold and glue arms in half
/

Fold tabs inside and glue or tape in place
|

Cut on solid lines —

└ Fold on dotted lines

Co-Captain Andy Hillstrand



Fold tabs inside and glue or tape in place

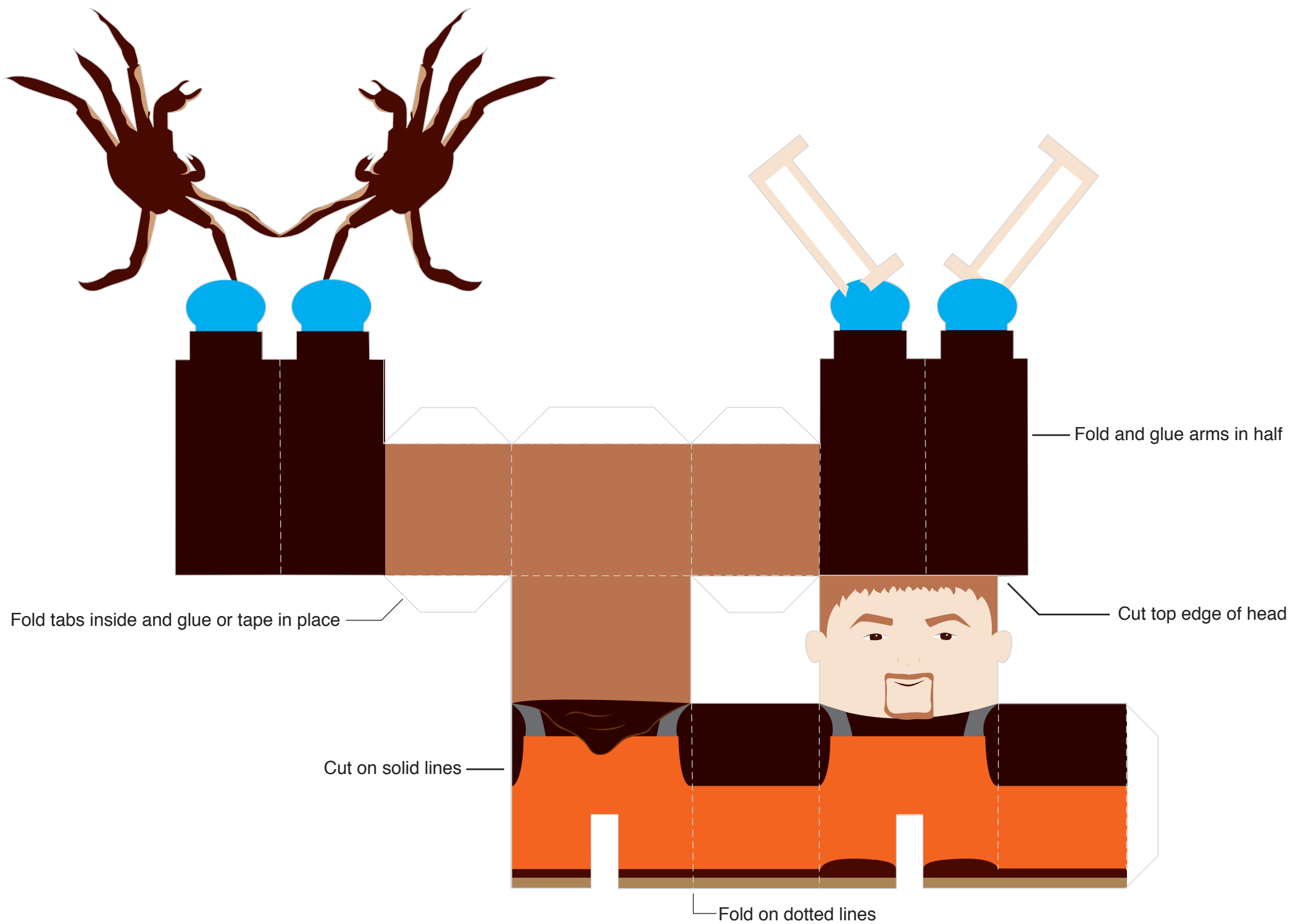
Cut on solid lines

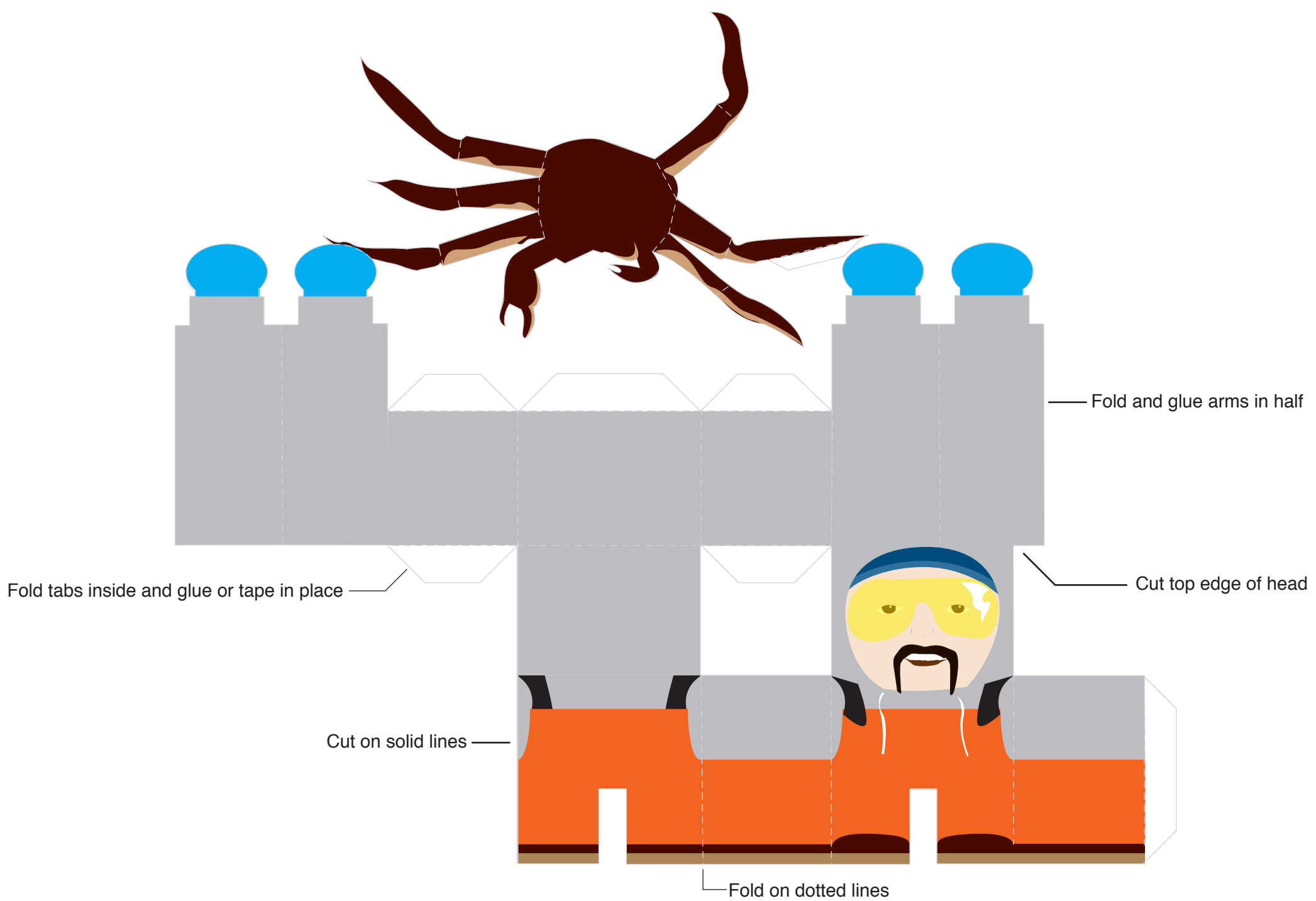
Fold on dotted lines

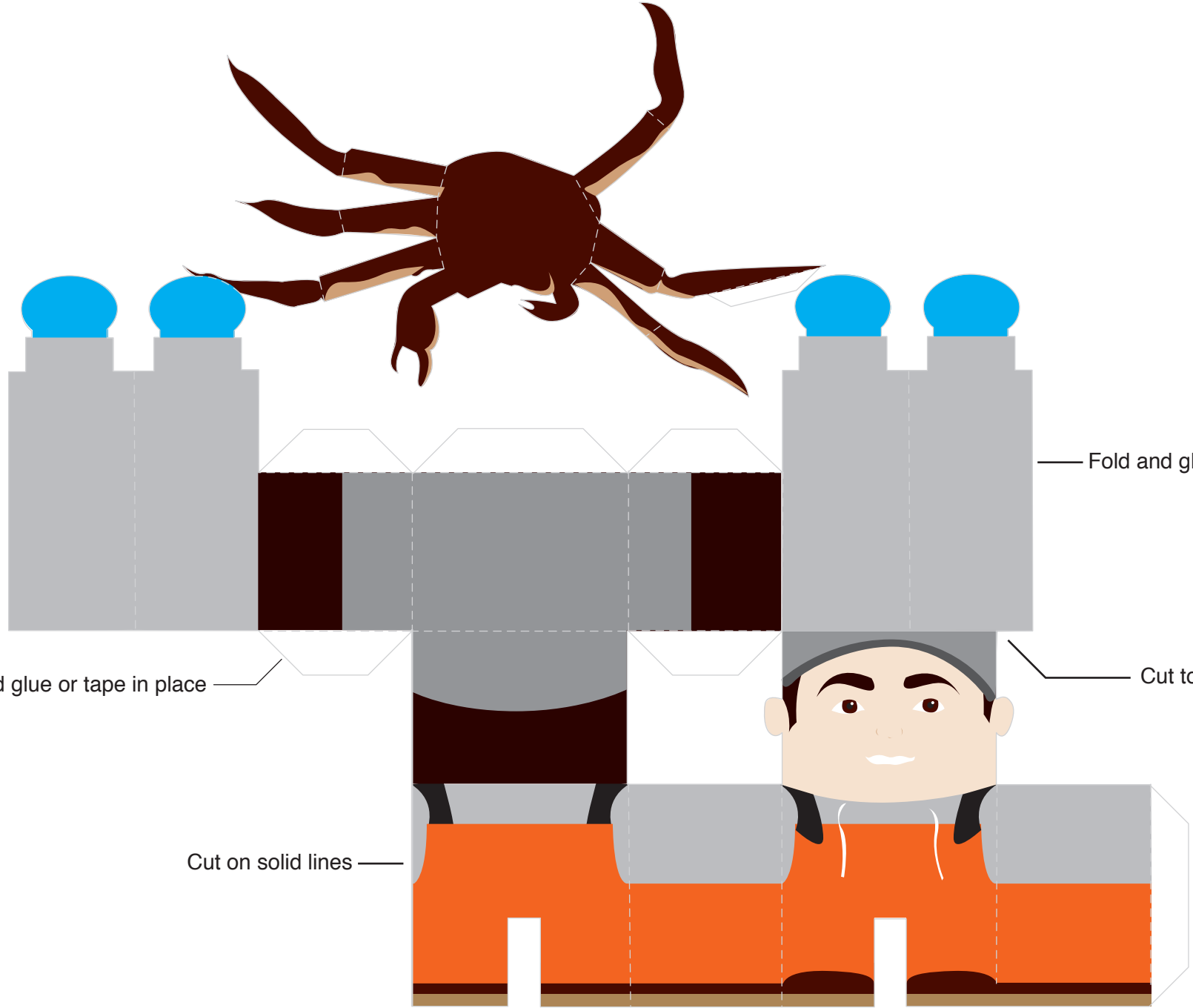
Fold and glue arms in half

Cut top edge of head

Neal Hillstrand





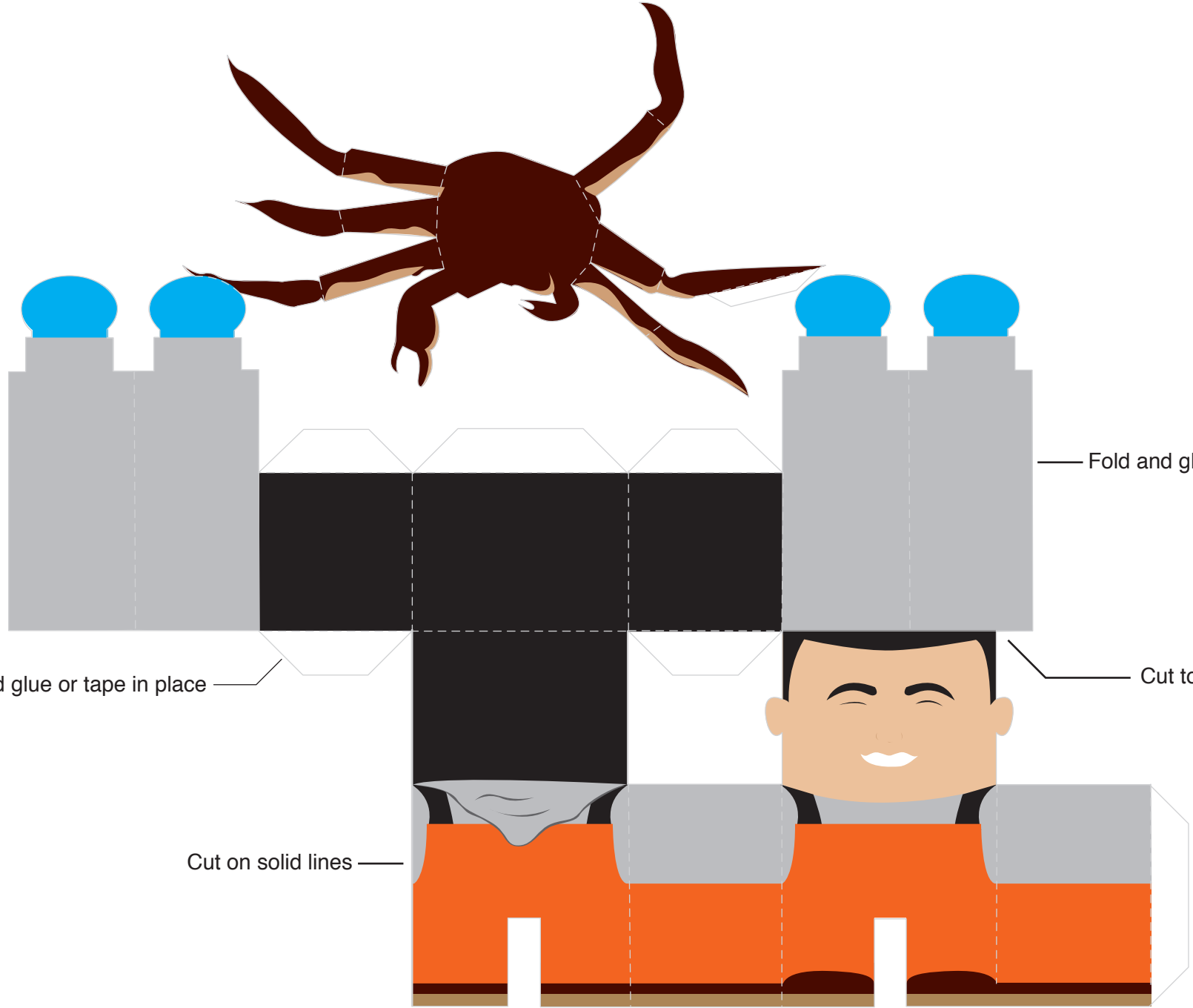


Fold and glue arms in half

Cut top edge of head

Cut on solid lines

Fold on dotted lines



Fold and glue arms in half

Cut top edge of head

Fold tabs inside and glue or tape in place

Cut on solid lines

Fold on dotted lines