

SHEET 1 OF 1 SHEET

IN THE COUNTY OF MONO
STATE OF CALIFORNIA

DIRECTOR OF PLANNING CERTIFICATE:

THE PLANNING COMMISSION OF THE COUNTY OF MONO,
STATE OF CALIFORNIA, DID ON THIS 2ND DAY OF JUNE
1977, ACKNOWLEDGE THAT THIS MAP IS IN ACCORD
WITH THE FILED AND APPROVED TENTATIVE PARCEL MAP

Robert Widomsky
DIRECTOR OF PLANNING

ENGINEER'S CERTIFICATE:

THIS MAP WAS PREPARED UNDER MY DIRECTION AND WAS COMPILED FROM RECORD DATA IN CONFORMANCE WITH THE REQUIREMENT OF THE SUBDIVISION MAP ACT AT THE REQUEST OF UPPER MAMMOTH DEVELOPMENT COMPANY IN MAY, 1971; I HEREBY CERTIFY ALL PROVISIONS OF APPLICABLE STATE LAW AND LOCAL ORDINANCES HAVE BEEN COMPLIED WITH.


DONALD MILLER
RCE. 15360

COUNTY SURVEYOR'S CERTIFICATE:

THIS MAP HAS BEEN EXAMINED THIS 27th DAY OF September 1971 FOR CONFORMANCE WITH THE REQUIREMENTS SECTION 11575 OF THE SUBDIVISION MAP ACT.

Richard L. God, Jr.
COUNTY SURVEYOR

BASIS OF BEARING:

THE BEARING N. 55° 41' 52" E., OF THE CENTERLINE OF CANYON BOULEVARD AS SHOWN ON THE MAP OF MAMMOTH SLOPES UNIT NO. 1, RECORDED IN BOOK 4, PAGES 17 THRU 19 INCLUSIVE, MAPS OF MONO COUNTY, WAS TAKEN AS THE BASIS OF BEARINGS SHOWN ON THIS MAP.

No. 1423

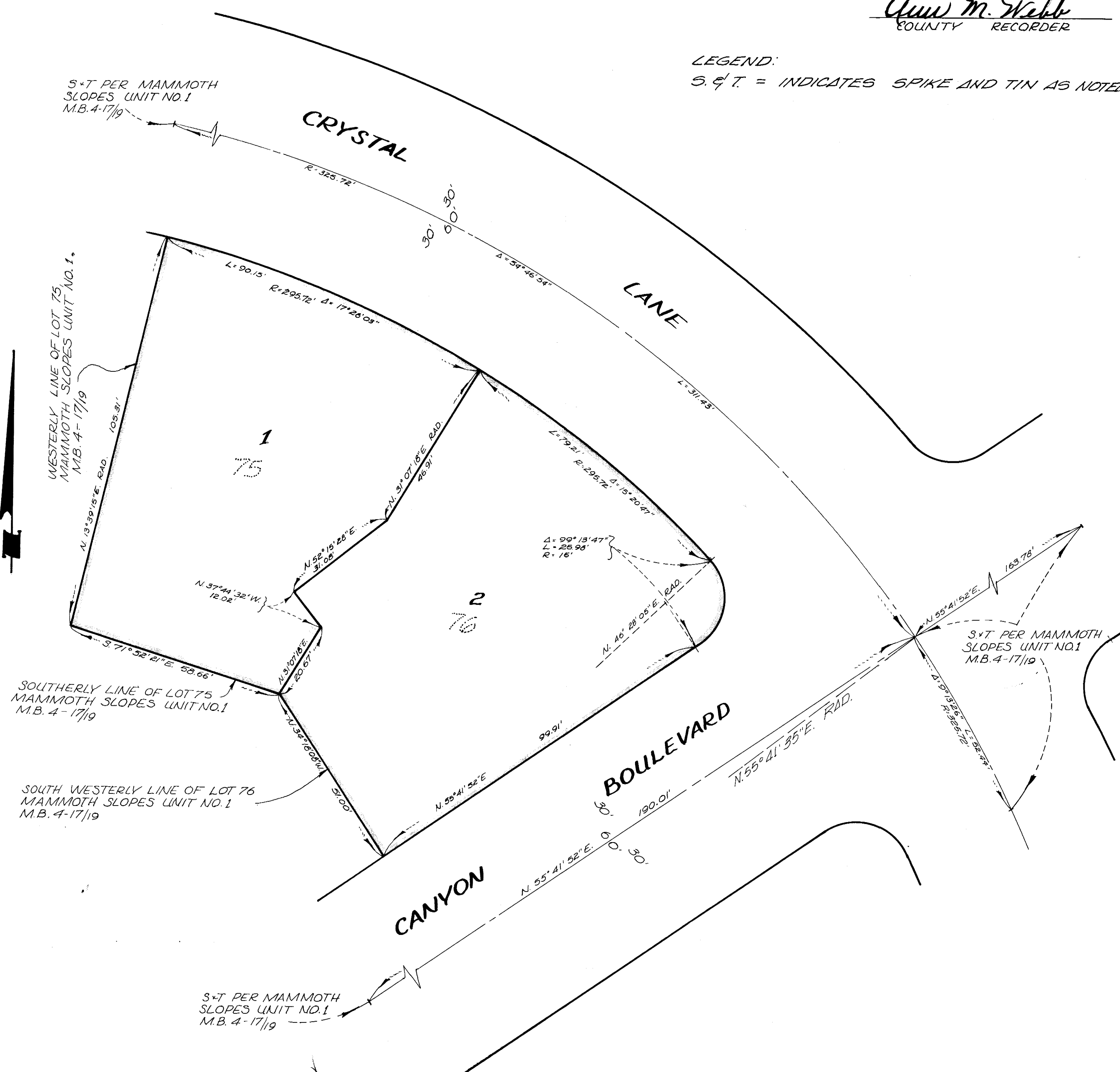
COUNTY RECORDER'S CERTIFICATE:

FILED FOR RECORD THIS 27th DAY OF Sept. 19: 71,
AT 11:00AM. IN BOOK 7- Maps, PAGE 52, AT THE
REQUEST OF Upper Mammoth Dev. Corp.

Ann M. Webb
COUNTY RECORDER

LEGEND:

S. & T. = INDICATES SPIKE AND TIN AS NOTED



Ud. 7 PAGE 52