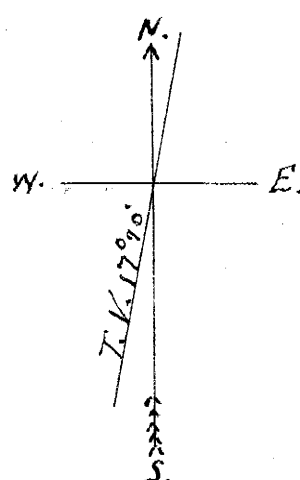


1/4 Corner 92 601' To Sec. Cor.

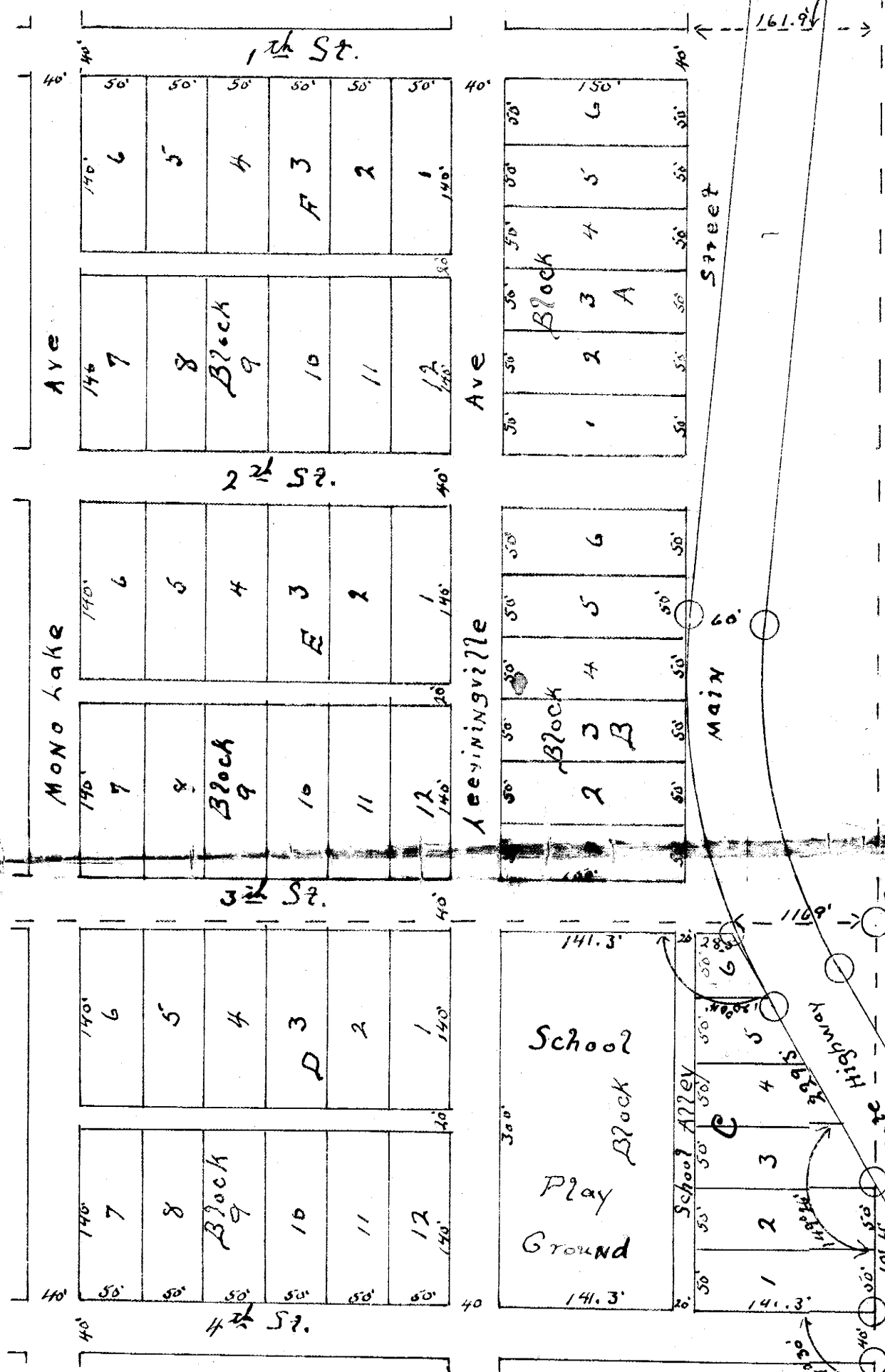
Leevining Town Site

W. 1/2 of
S. W. 1/4
Sec. 9
T. 1 N., R. 26 E.
M. D. M.



1/4 Corner 261'

Scale: one foot = 1320 feet



Charles W. Dutton

Chris. Moattly

Chas. L. Hayes

Chas. L. Hayes

Ruth Laughlin

Ruth Laughlin

Charles W. Dutton
James Borland

Filed
Oct. 6, 1926.
Ruth Laughlin
Clerk.

Ruth Laughlin

N. S. Sec. Corner

S 89° 27' E.

1379'

1/4 Corner

395' To Sec. Cor.

17

16