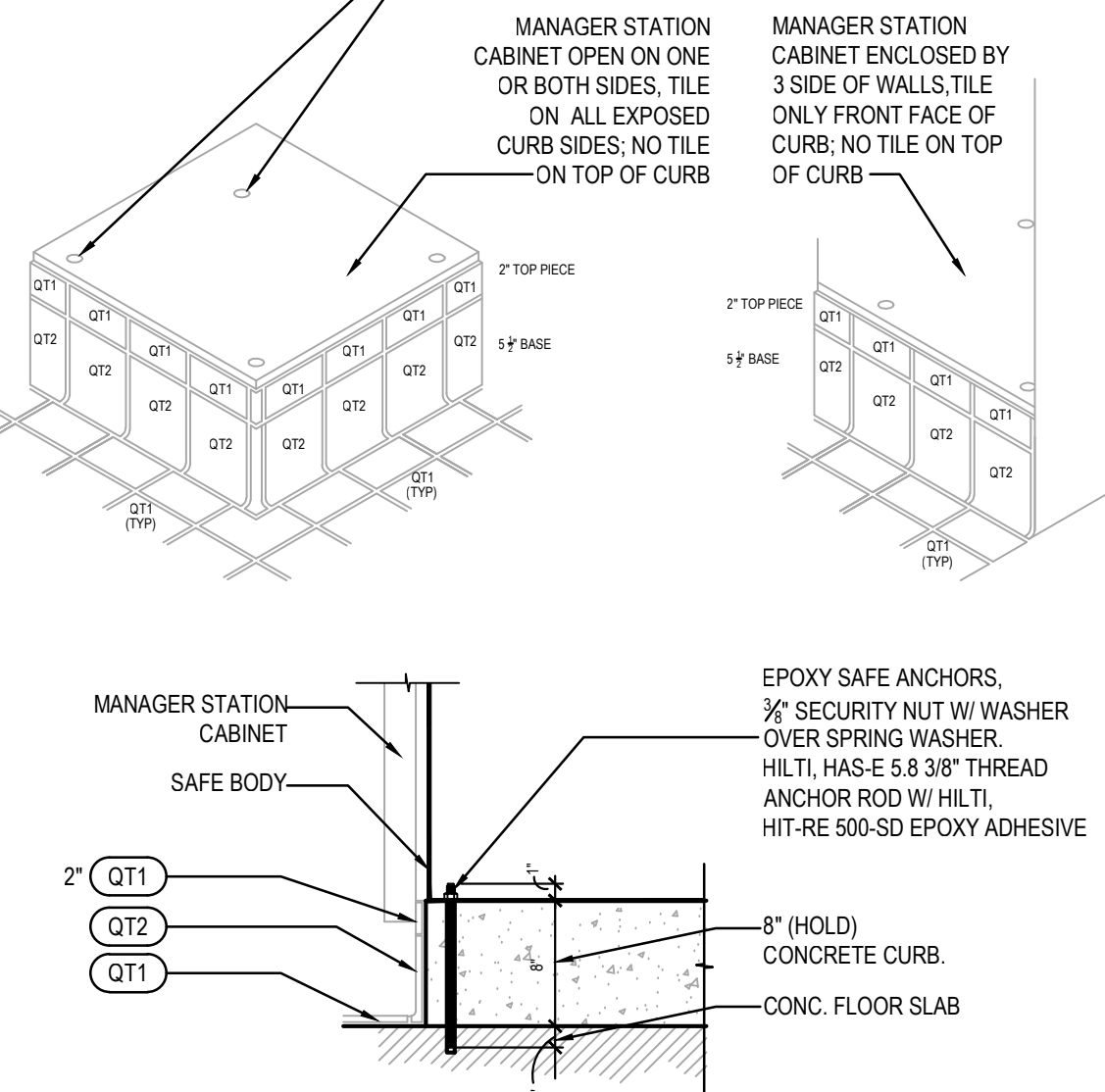


MANAGER CABINET STATION CURB SIZES REFER FLR. PLAN FOR LOCATION

- IF CABINET IS ENCLOSED BY 3 SIDE OF WALLS:
8" H X 24" W X 48-1/2" L (CONCRETE CURB ONLY, NOT INCLUDE TILE BASE)
TILE ONLY ON FRONT FACE (EXPOSED CURB), THIS APPLY TO PROTOTYPE BUILDING LAYOUTS.
- IF CABINET ENCLOSED BY ONLY (1) ONE WALL:
8" H X 24" W X 47" L (CONCRETE CURB ONLY, NOT INCLUDE TILE BASE)
TILE FRONT AND (1) SIDE FACE (EXPOSED CURB)
- IF CABINET OPEN WITH NO WALLS:
8" H X 24" W X 46" L (CONCRETE CURB ONLY, NOT INCLUDE TILE BASE)
TILE ALL 3 SIDES OF THE CURB

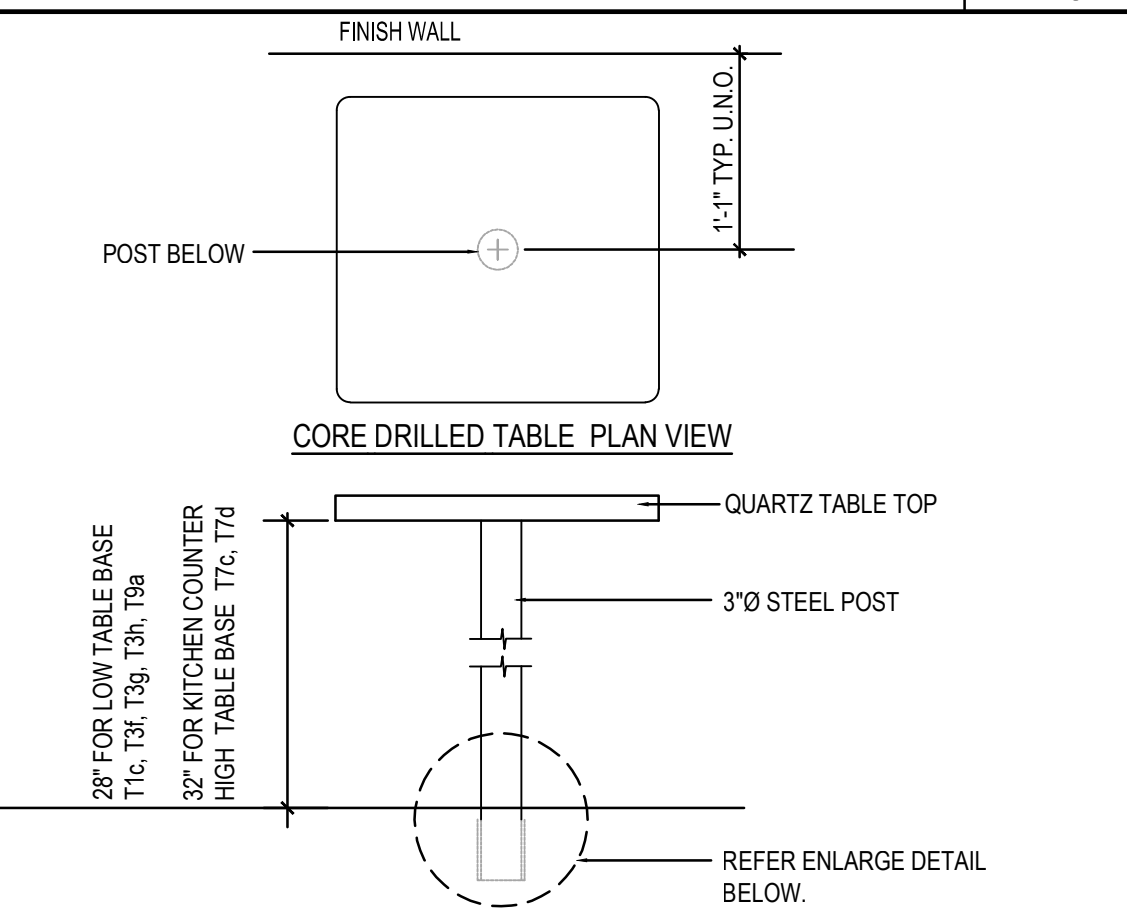
DRILL 1/2" HOLES THRU CURB INTO FLOOR SLAB. REFER SECTION
DETAIL BELOW. HOLE LOCATIONS VARIES DEPEND ON SAFE MODEL.
CHECK PANDA PM FOR SAFE MODEL.



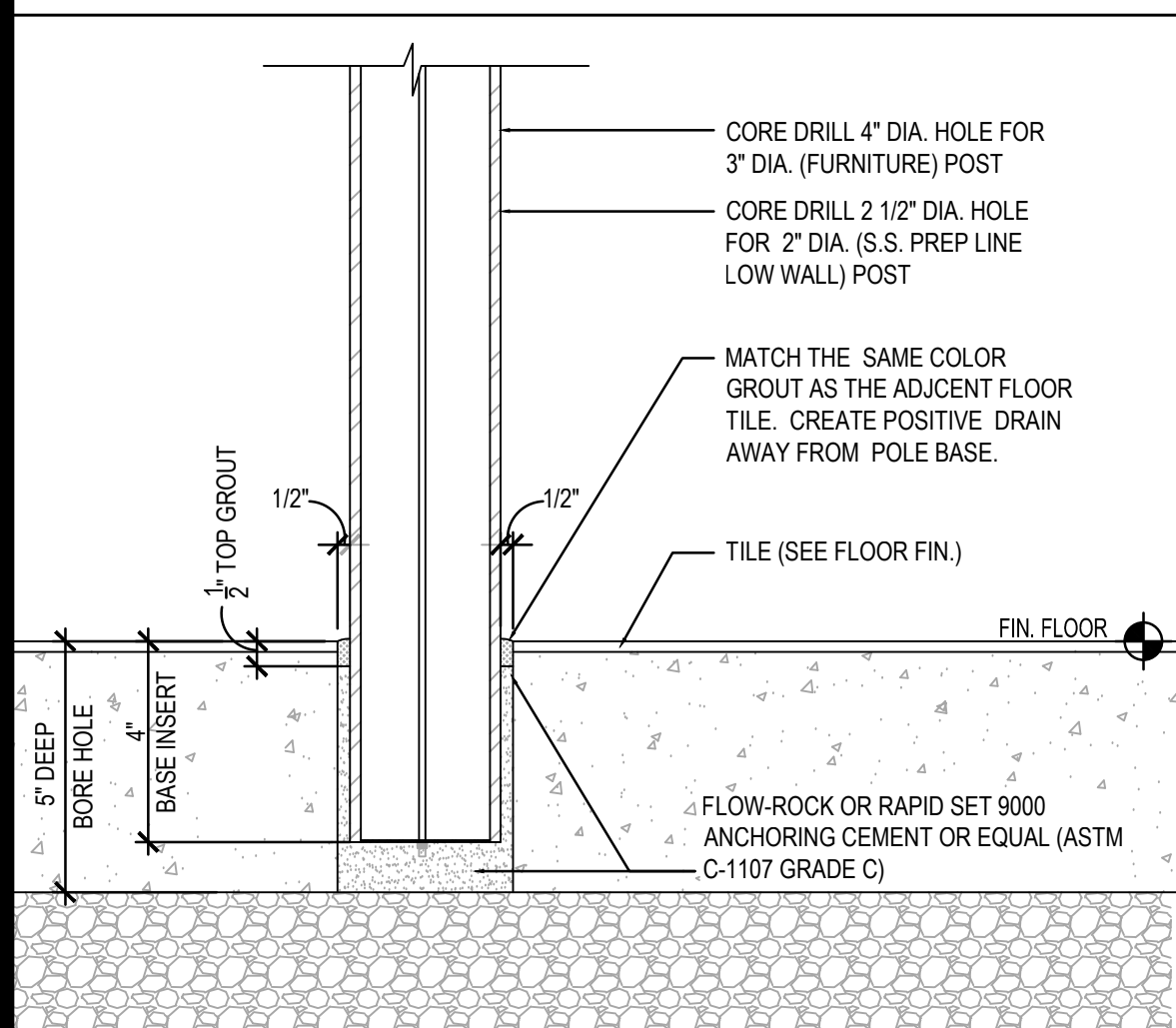
MGR. STATION & SAFE CURB

20

Scale= 1 1/2" = 1'-0" A-404



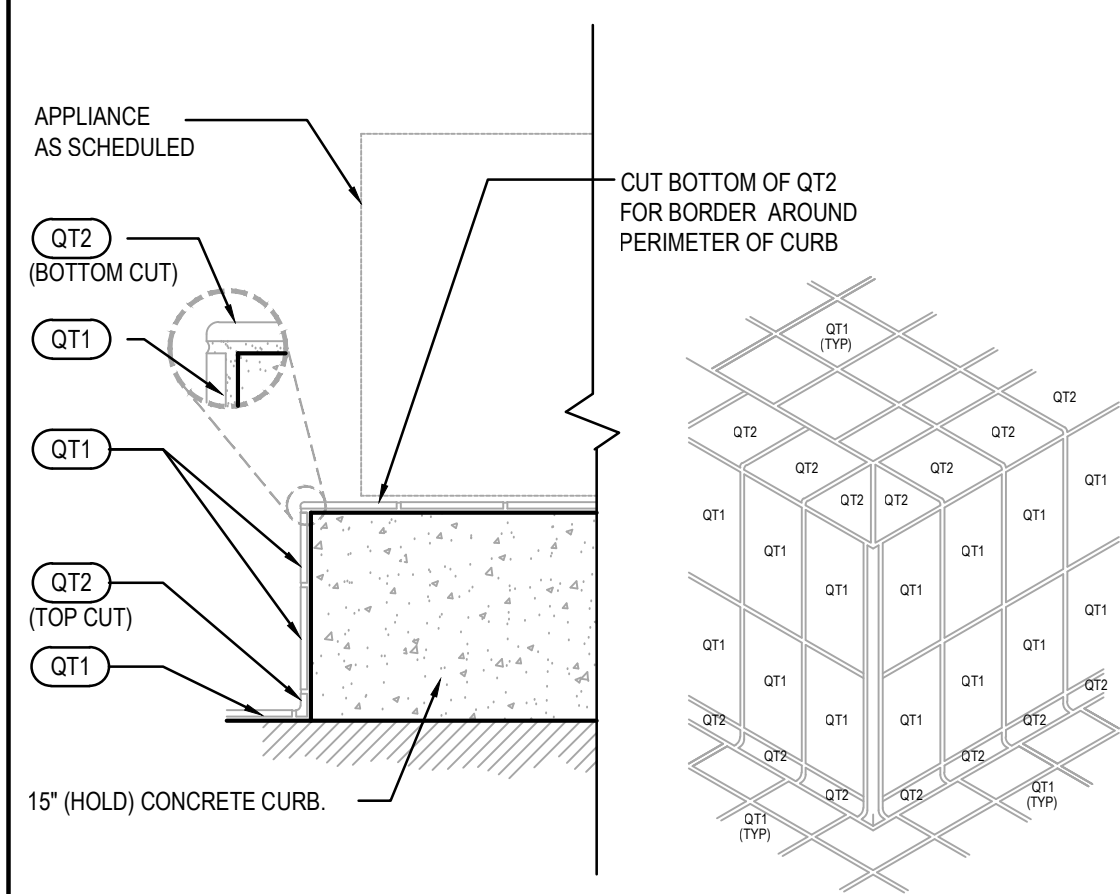
NOTE:
G.C. TO REFER CORE DRILL LOCATION ON SHEET A-109



STANDARD CORE DRILL TABLE

17

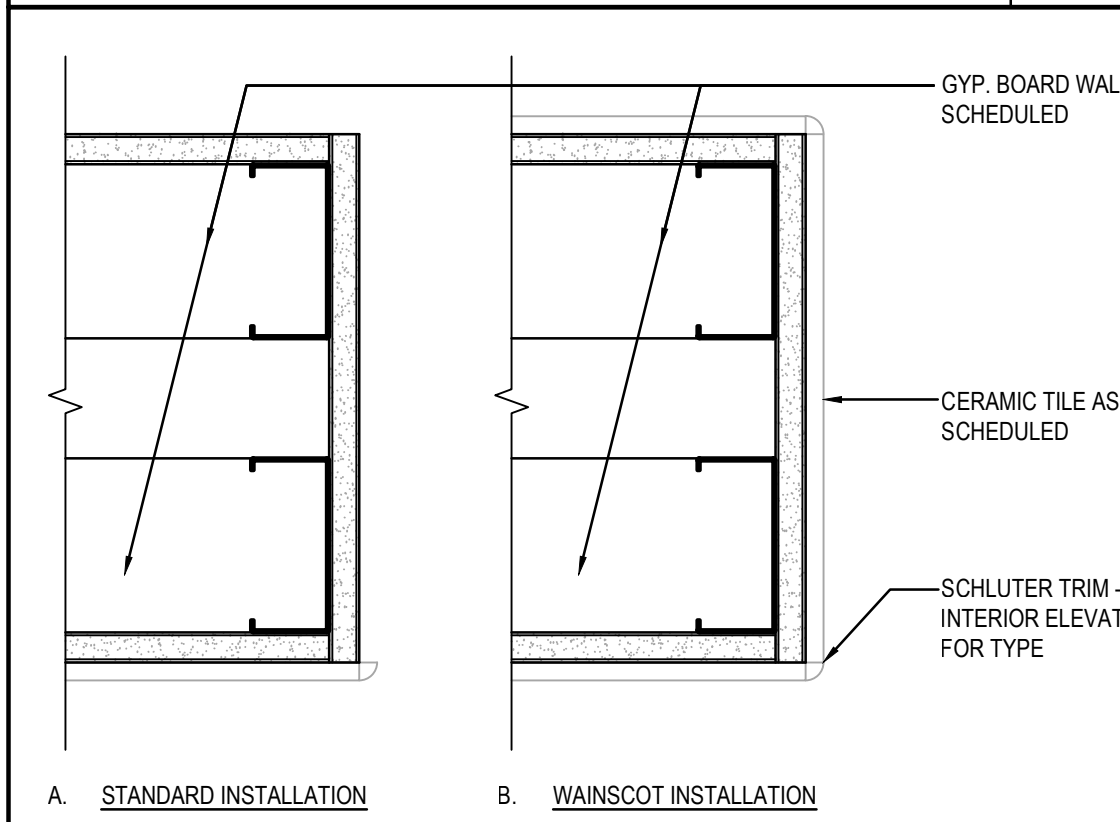
Scale= 1 1/2" = 1'-0" A-404



15" CURB DETAIL

12

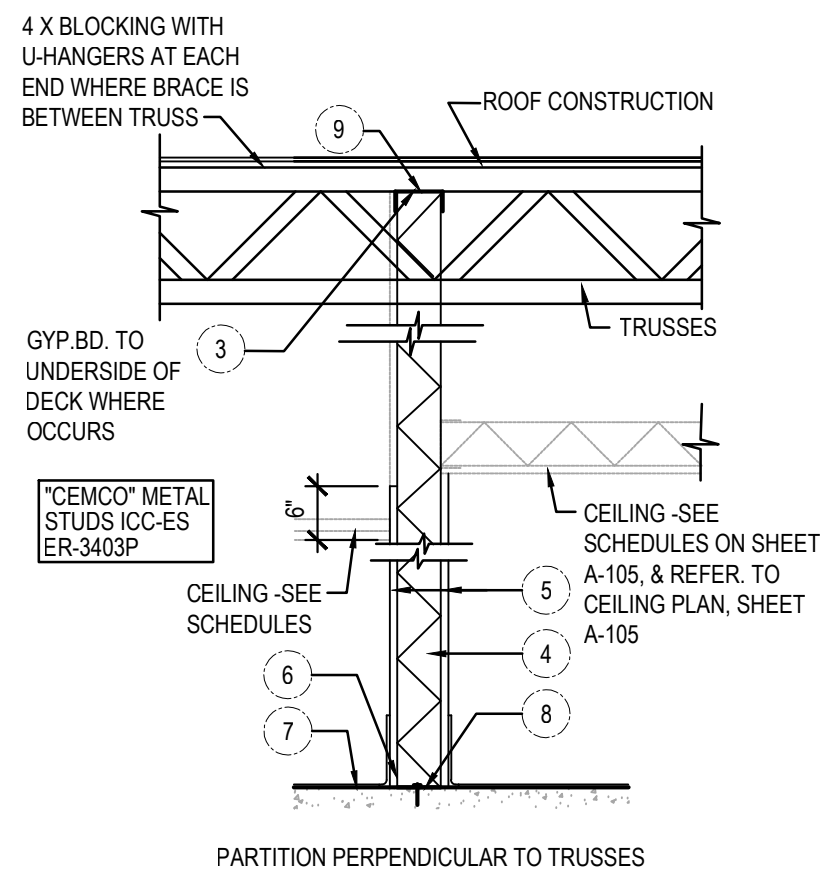
Scale= 1 1/2" = 1'-0" A-404



PLAN SECTION WALL DETAIL

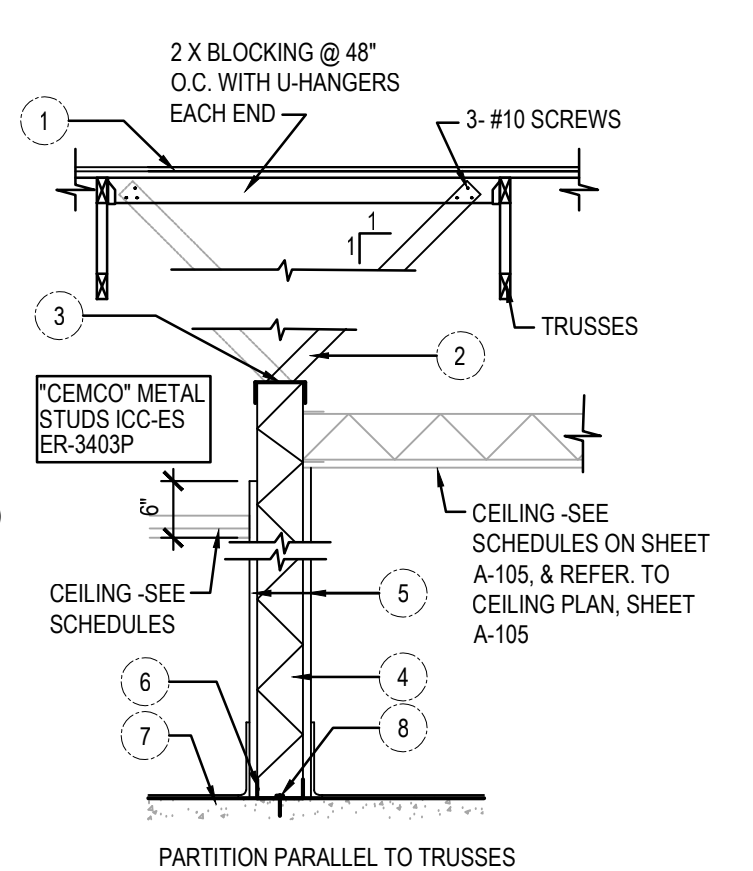
11

Scale= 3" = 1'-0" A-404



HEIGHT	METAL STUD SIZE & SPACING
UP TO 12'-0"	1 1/2" x 3 1/2" x 20Ga @ 24" O.C.
BRACING LENGTH	SIZE
6'-0" OR UNDER	3 1/2" x 20Ga
6'-1" TO 8'-0"	4" x 20Ga

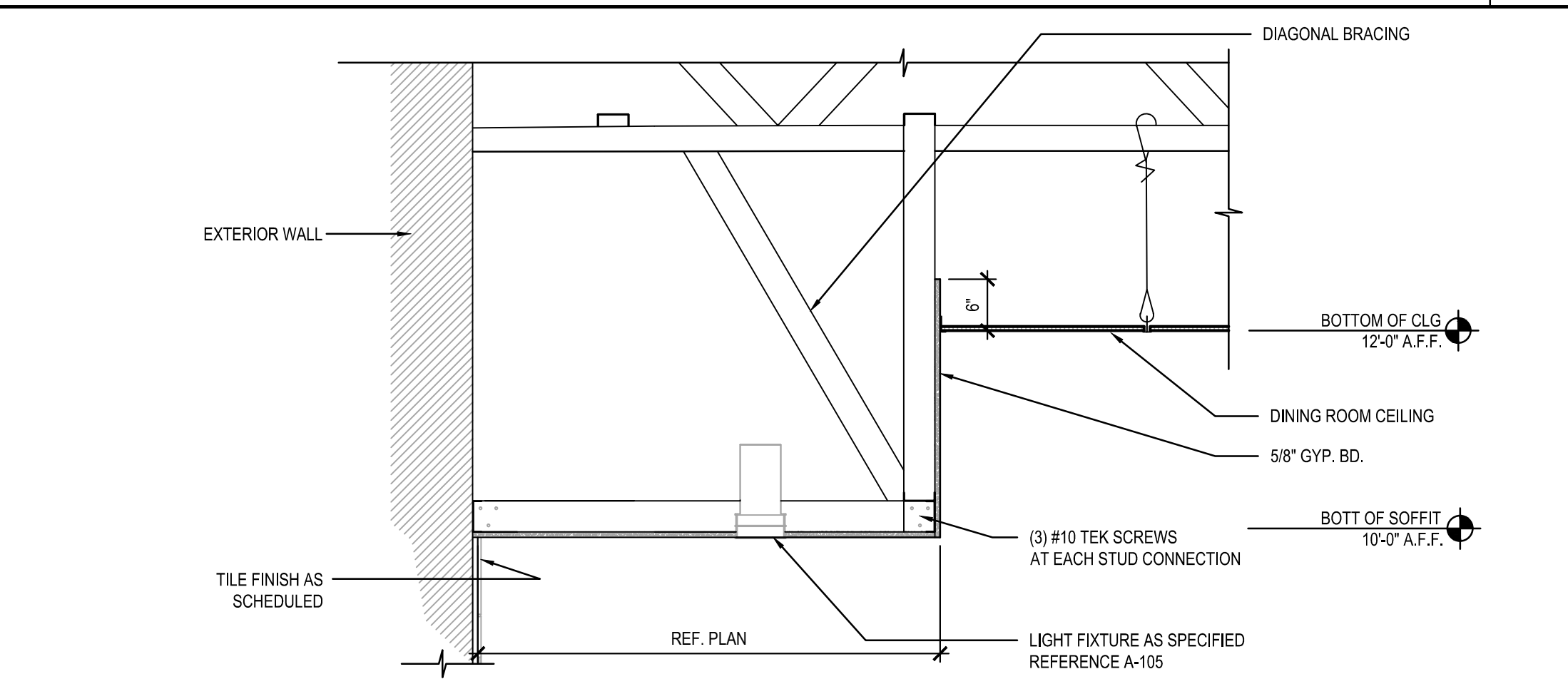
- STRUCTURAL MEMBER ABOVE
- BRACING @ 4'-0" O.C. STAGGERED W/ 3/10 EA. END
- 20 Ga. CONT. TRACK W/ 8# SCREW/STUD
- METAL STUDS (SEE SCHEDULE)
- SEE ARCHITECTURAL FOR FINISH
- CONT. 20 Ga. UNPUNCHED TRACK (1 1/16" FLANGE)
- CONCRETE SLAB
- HILTI POWDER ACTUATED FASTENER .145 Ø x 1 1/2" PENETRATION @ 32" O.C. OR EQUAL
- 18 Ga. UNPUNCHED 3" DEEP LEG TRACK W/ 3 #10 SCREWS
- #8 SCREW PER STUD TYPICAL CONNECTION EA. FLANGE OF STUD TO STEEL TRACK (TOP & BOTT. TRACK)



PARTITION DETAILS

10

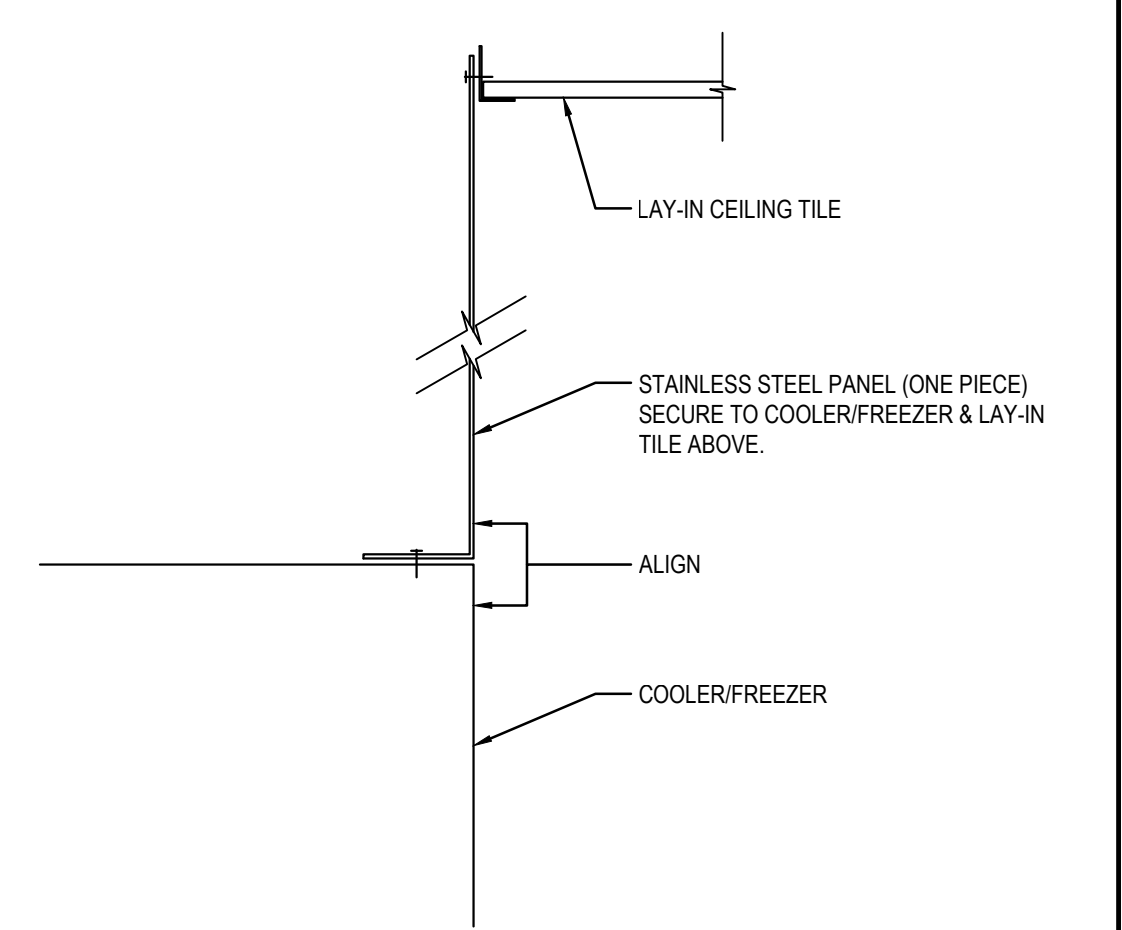
Scale= 3/4" = 1'-0" A-404



SOFFIT @ BEVERAGE COUNTER

9

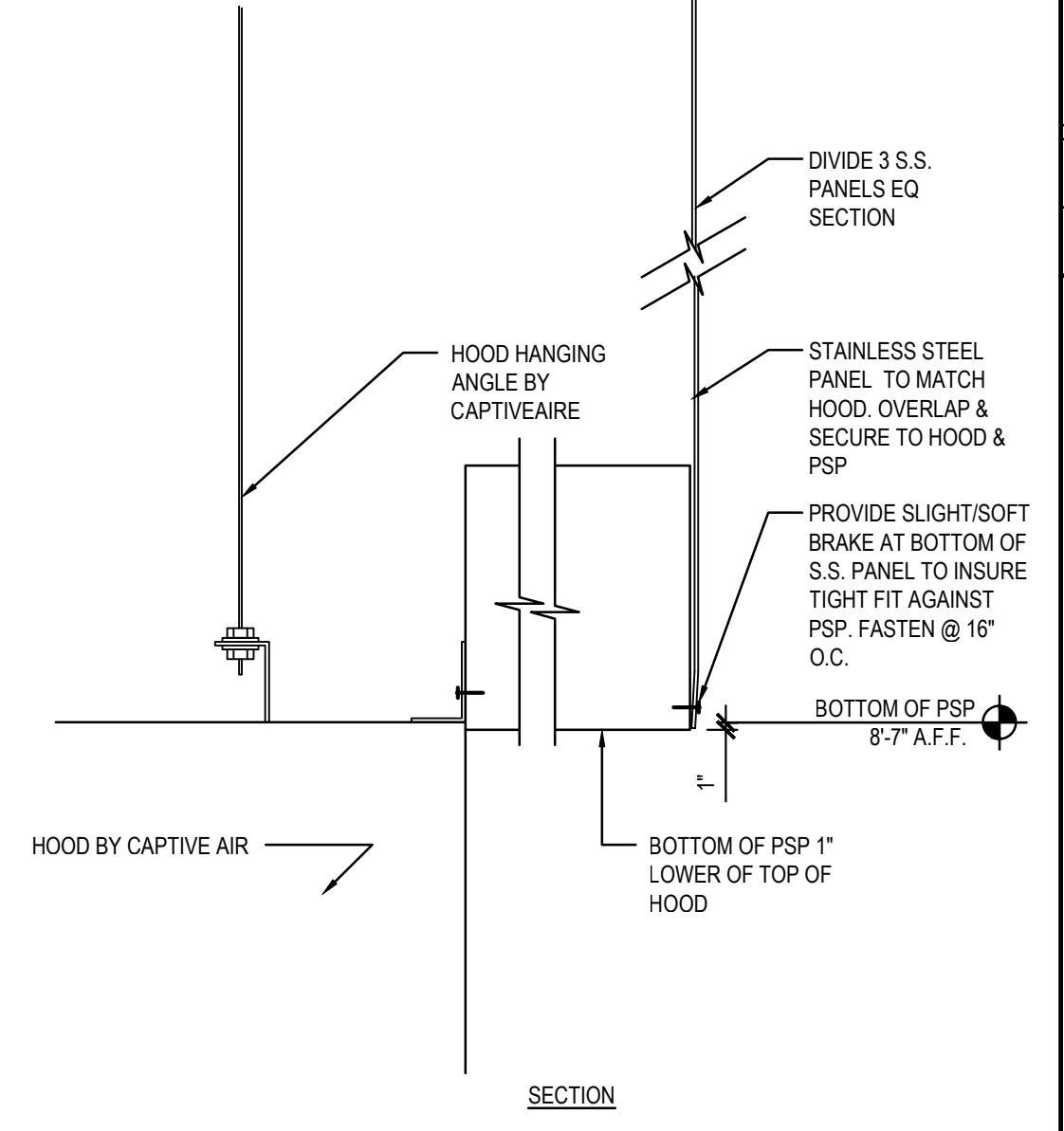
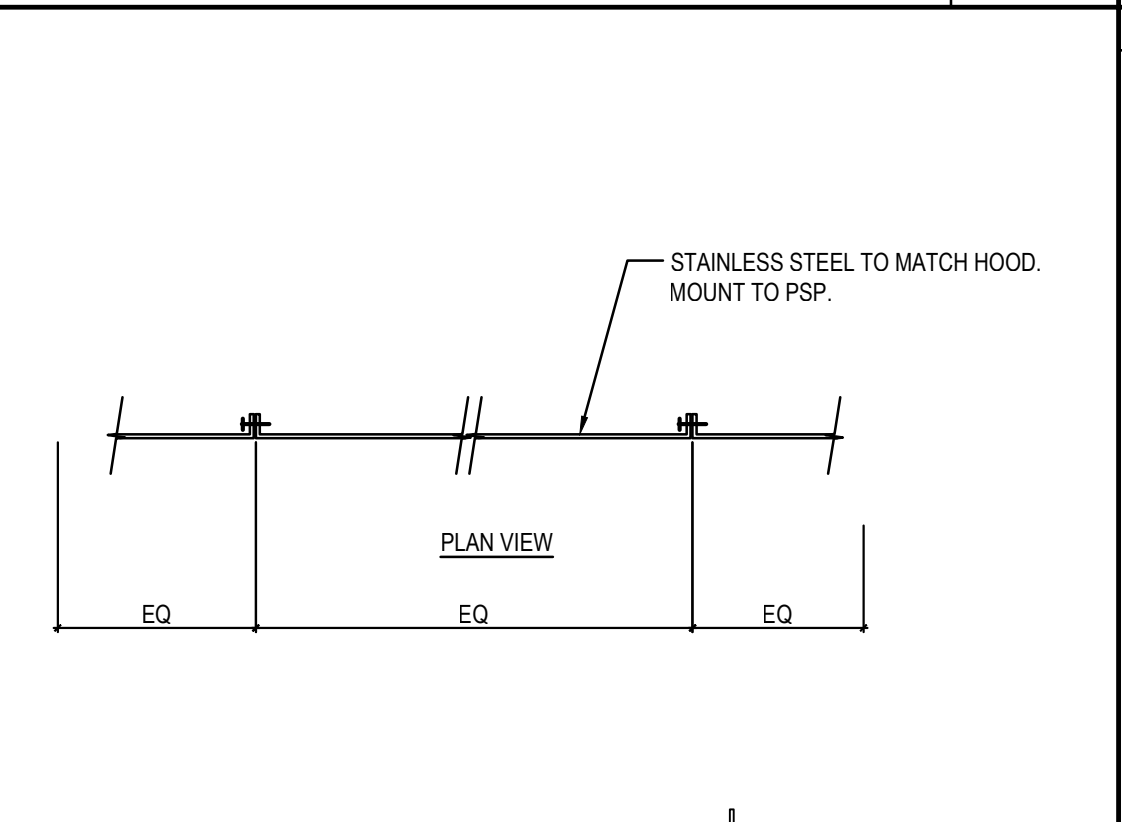
Scale= 3/4" = 1'-0" A-404



S.S. DETAIL @ COOLER / FREEZER

8

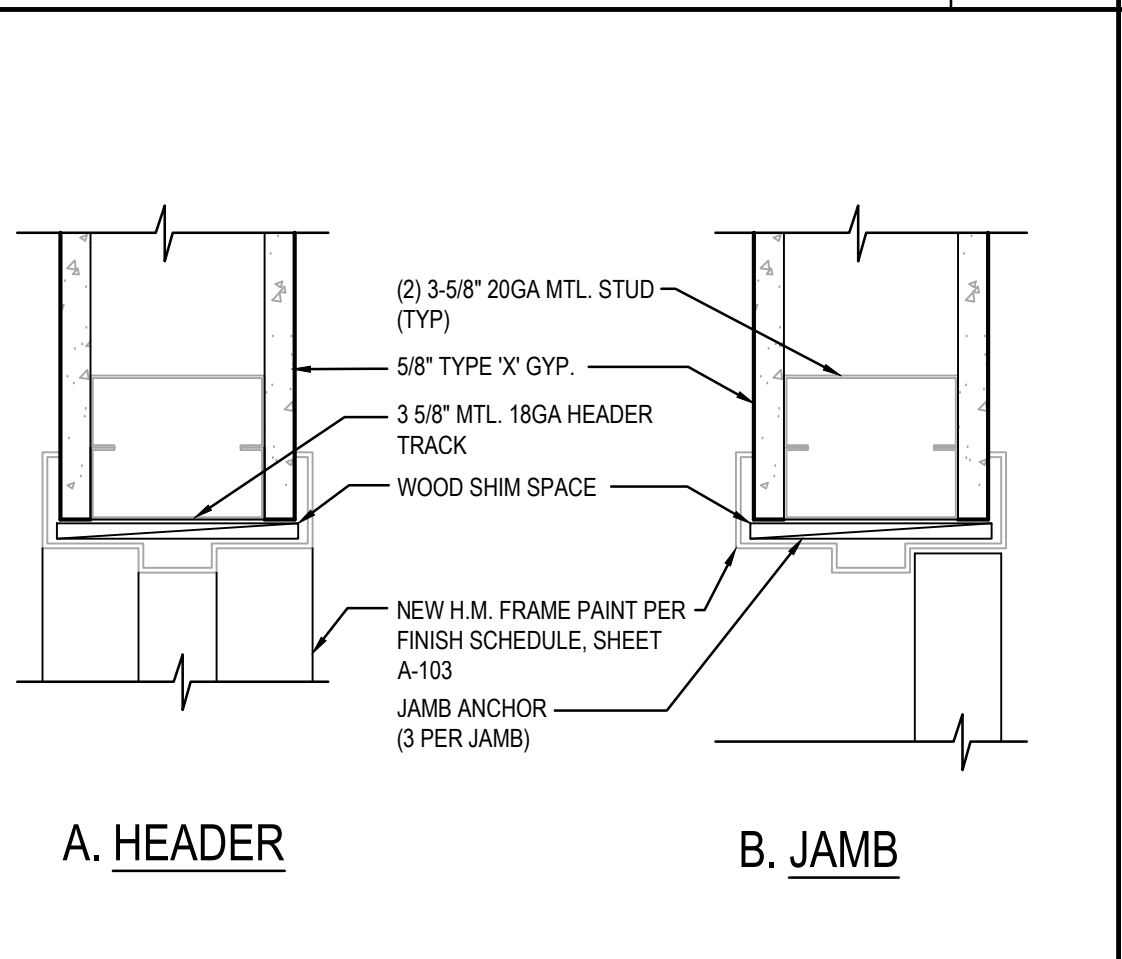
Scale= 1/2" = 1'-0" A-404



S.S. DETAIL @ EXHAUST HOOD

6

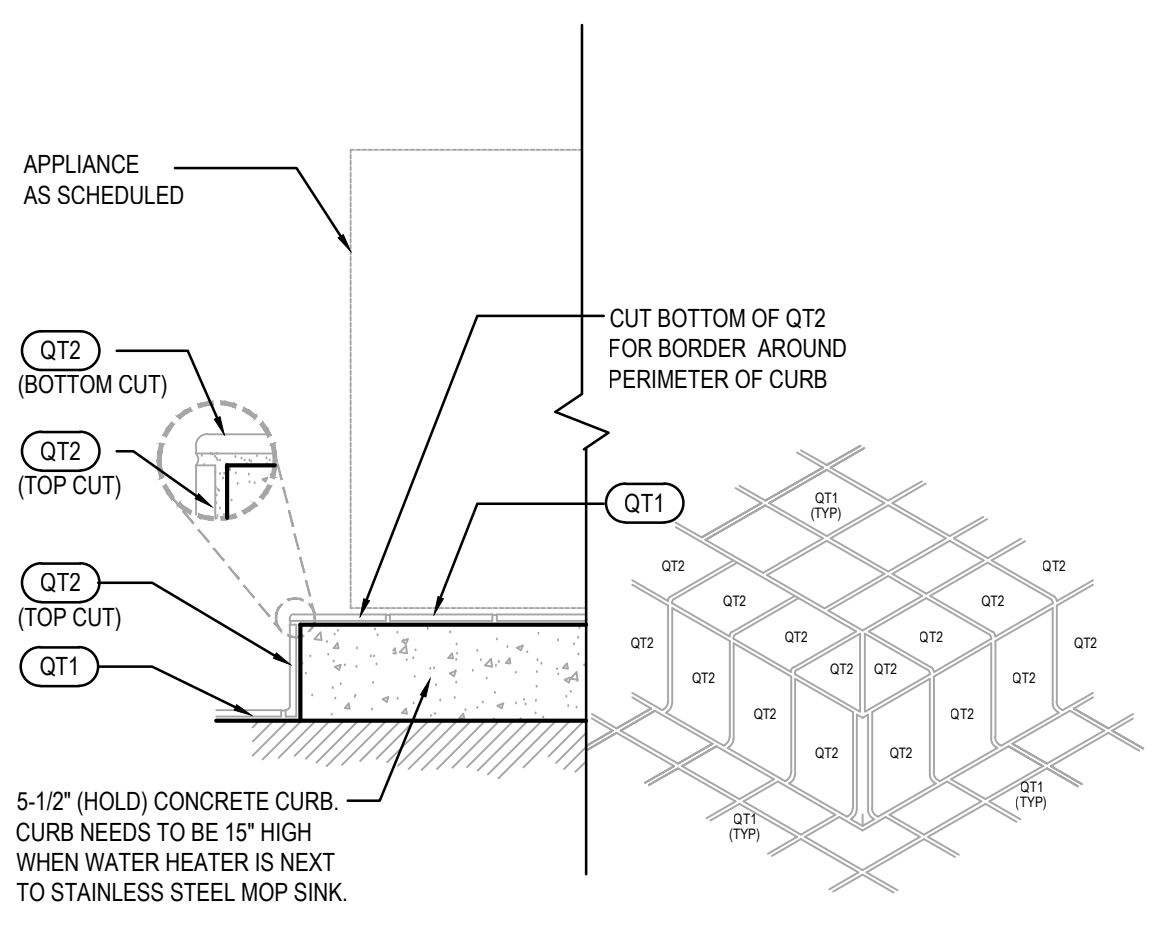
Scale= 1/2" = 1'-0" A-404



INTERIOR DOOR HEADER/JAMB

5

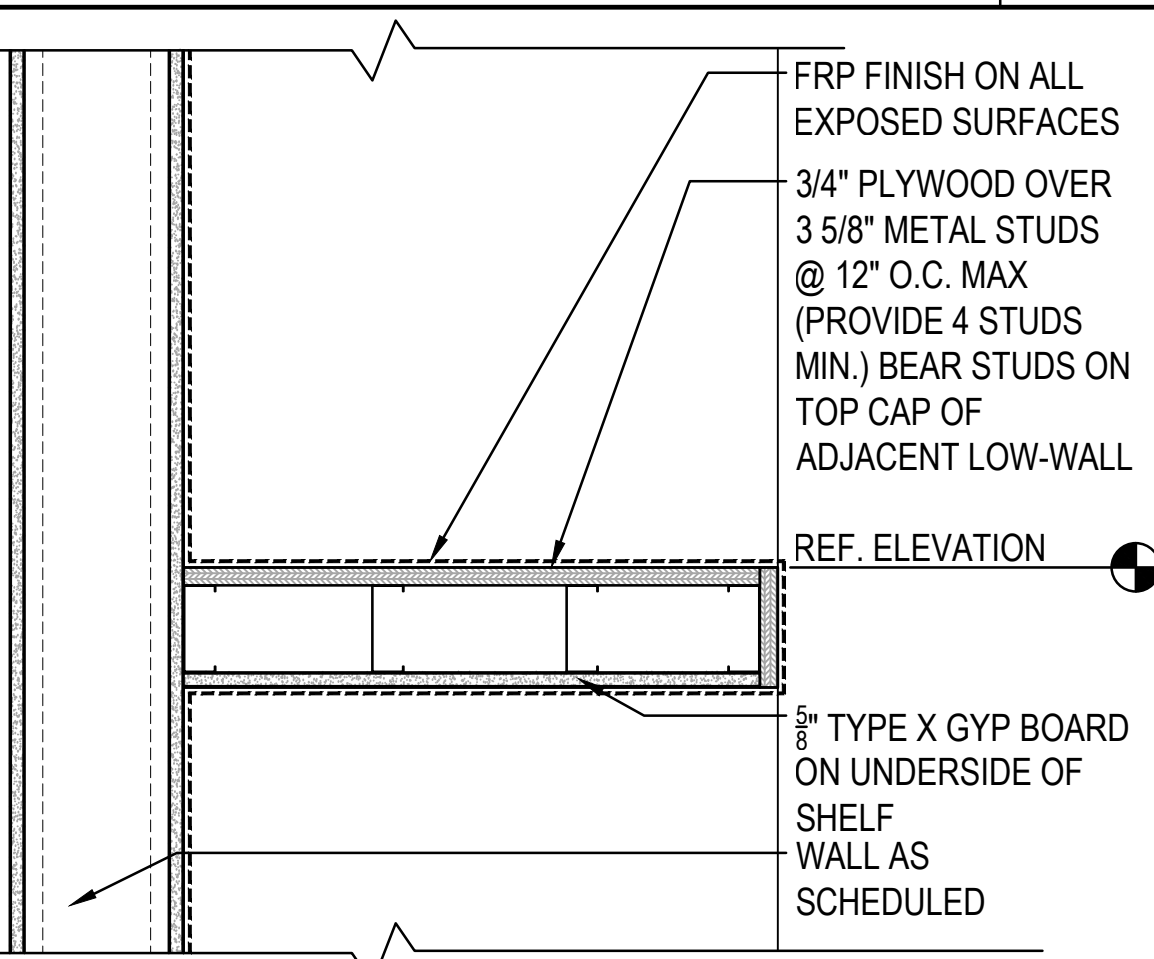
Scale= 3" = 1'-0" A-404



5 1/2" CURB DETAIL

4

Scale= 1 1/2" = 1'-0" A-404



WATER HEATER SHELF

3

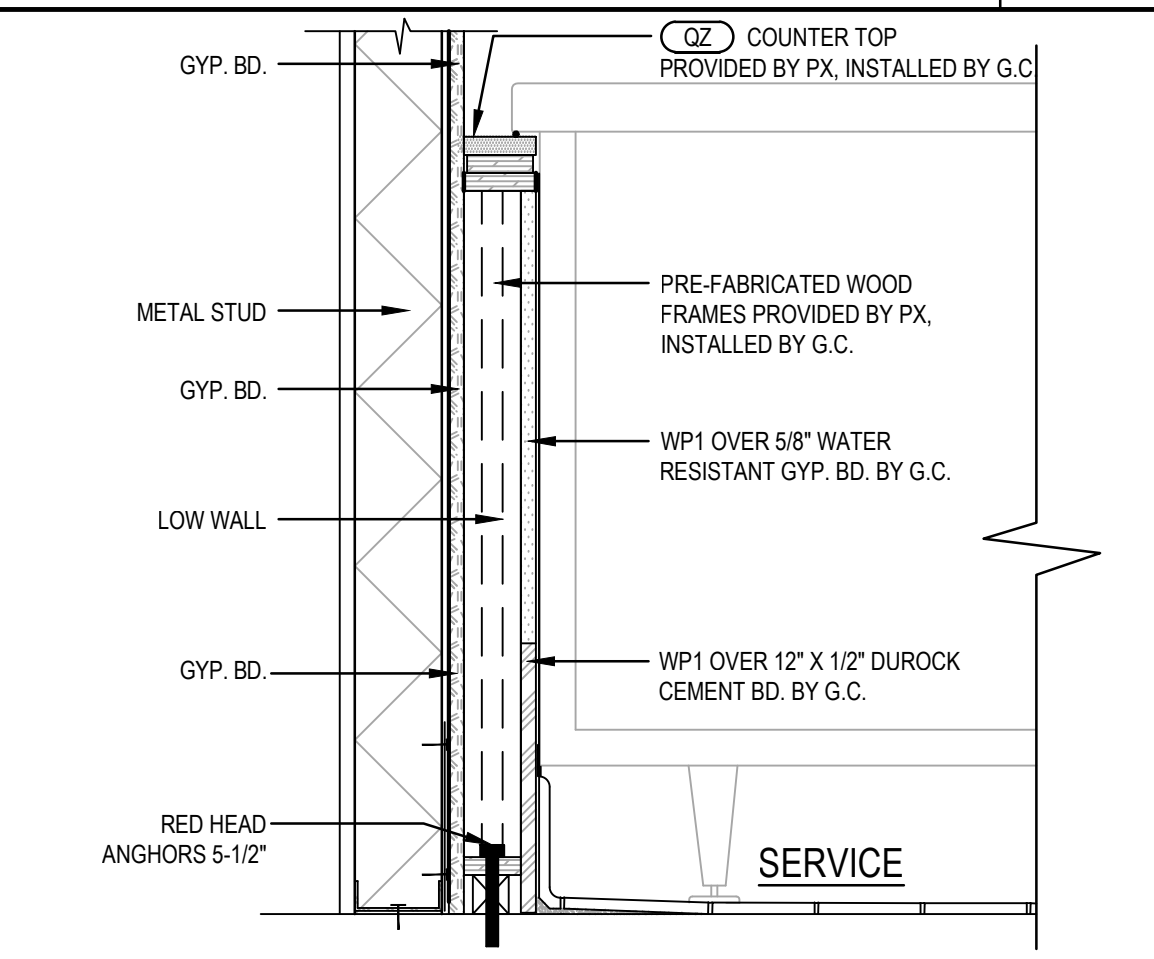
Scale= 3" = 1'-0" A-404



NOT USED

2

Scale= 3" = 1'-0" A-404



SERVICE COUNTER END DETAIL

1

Scale= 1 1/2" = 1'-0" A-404



PANDA RESTAURANT GROUP INC.

1683 Walnut Grove Ave.
Rosemead, California
91770

Telephone: 626.799.9898
Facsimile: 626.372.8288

All ideas, designs, arrangement and plans indicated or represented by this drawing are the property of Panda Express Inc. and were created for use on this specific project. None of these ideas, designs, arrangements or plans may be used by or disclosed to any person, firm, or corporation without the written permission of Panda Express Inc.

REVISIONS:

NO.	DESCRIPTION	DATE
1st	ISSUE FOR BID & PERMIT	01-11-17

ISSUE DATE:

NO.	DESCRIPTION	DATE
1st	ISSUE FOR BID & PERMIT	01-11-17

DRAWN BY: RR

PANDA PROJECT #: S8-17-D5197

ARCH PROJECT #: 1701



1702 MILDARE COURT, THOMPSONS STATION, TN 37179
PHONE (615) 591-0675 FAX (666) 594-1225

PANDA EXPRESS
HIGHWAY 90 AT SHADOW OAK DRIVE
4890 HIGHWAY 90
PACE (MILTON), FL 32571

2200 TRUE WARM & WELCOME

A-404

ARCHITECTURAL
DETAILS