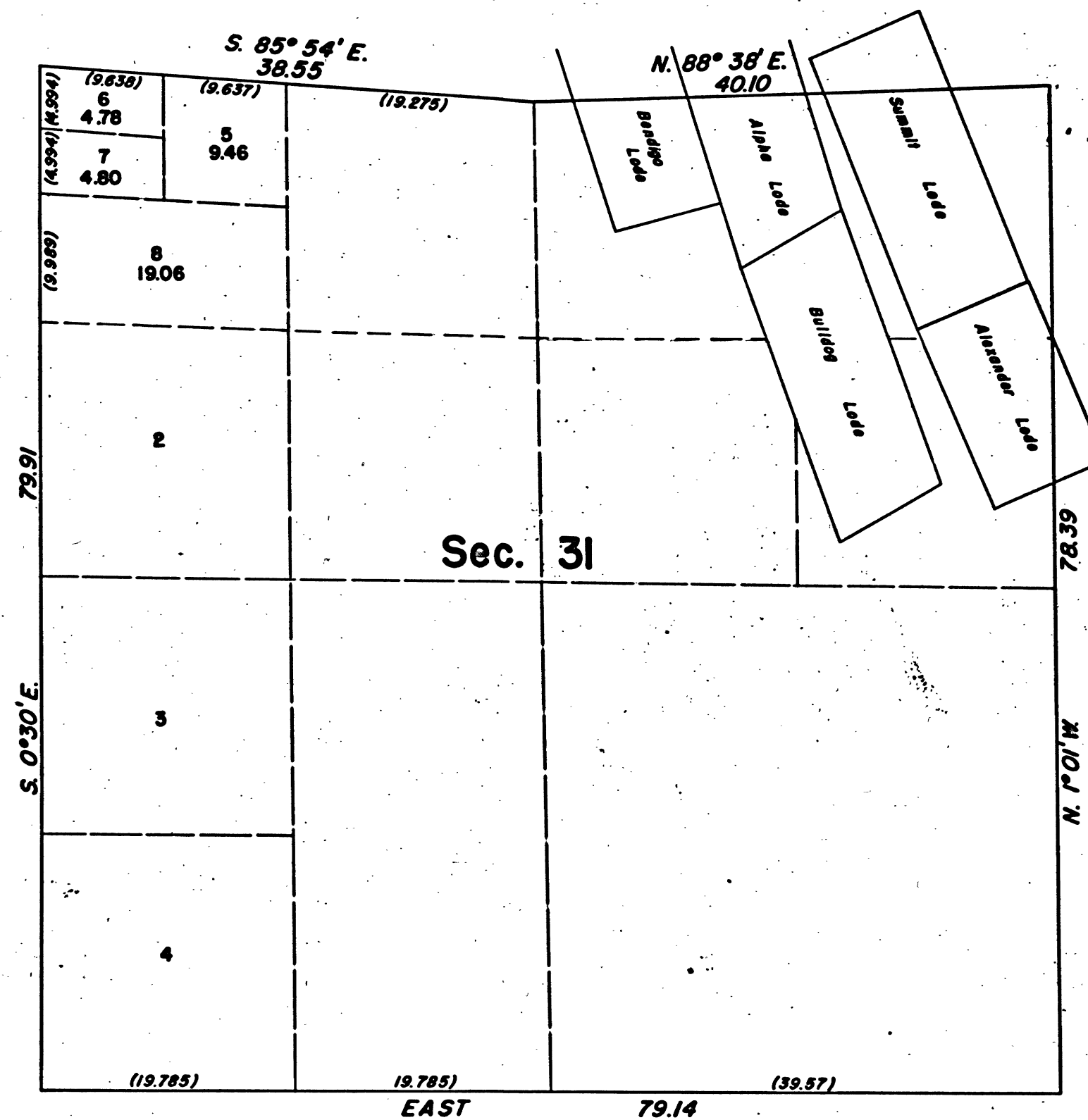


TOWNSHIP 6 NORTH, RANGE 13 EAST, MOUNT DIABLO MERIDIAN, CALIFORNIA

SUPPLEMENTAL PLAT OF SECTION 31



This plat, showing amended lottings, is based upon plats approved October 15, 1875 and January 29, 1920.

UNITED STATES DEPARTMENT OF THE INTERIOR
BUREAU OF LAND MANAGEMENT
Washington, D. C., January 20, 1954

This plat, showing amended lottings, having been correctly prepared in accordance with the regulations, is hereby accepted.

For the Director

James B. Clement

Assistant Chief, Division of
Cadastral Engineering

41 531-C

T. 6N. R. 13E. MD

BLM 286