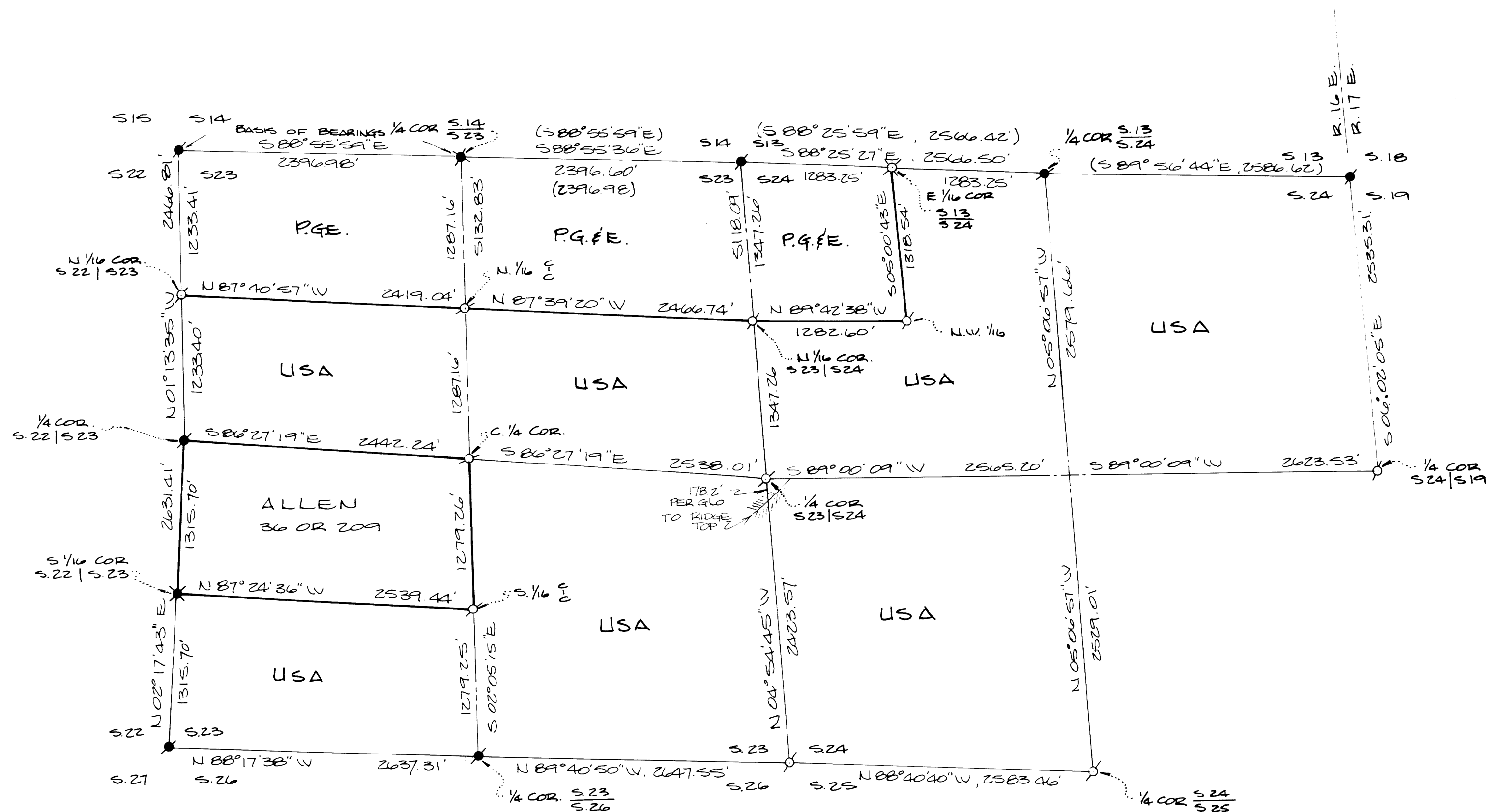


# RECORD OF SURVEY

OF  
PORTIONS OF SECTION'S 23 & 24,  
T.8N., R.16E., M.D.M.

— AMADOR COUNTY - CALIF. —

FOR  
U.S. FOREST SERVICE



SCALE: 1"=200'

## LEGEND

- FUD. U.S.B.L.M. MONUMENT
- SET 2" OPEN IRON PIPE W/ BRASS CAP STAMPED APPROPRIATELY
- ✱ FUD. BERNTSEN MONUMENT (3X30" CAPPED ALUMINUM PIPE)
- ✱ SET BRASS CAP IN ROCK
- ( ) RECORD PER 30 R.S. 67
- [ ] RECORD PER ORIGINAL GOVERNMENT MEASURE
- +--- CALCULATED PT. ~ NOTHING FUD. OR SET.

BEARINGS ON THIS SURVEY  
BASED UPON 30 R.S. 67

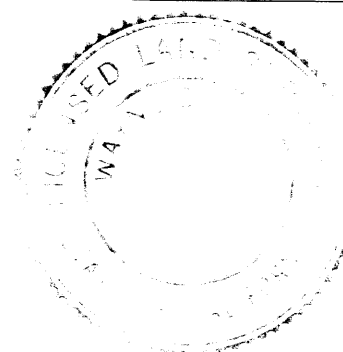
## NOTE:

DESCRIPTION OF MONUMENTS  
SHOWN ON PAGE 2.

## SURVEYOR'S CERTIFICATE

THIS MAP CORRECTLY REPRESENTS A SURVEY MADE  
BY ME OR UNDER MY DIRECTION IN CONFORMANCE  
WITH THE REQUIREMENTS OF THE LAND SURVEYORS  
ACT AT THE REQUEST OF U.S. FOREST SERVICE  
IN MAY, 1979.

Wayne C. Swart  
WAYNE C. SWART L.S. 4130.



## COUNTY SURVEYOR'S CERTIFICATE

THIS MAP HAS BEEN EXAMINED FOR CONFORMANCE  
WITH THE REQUIREMENTS OF THE LAND SURVEYORS  
ACT THIS 1 DAY OF October, 1979.

By Deputy C. Lee DeRango L.S. 4066  
JOHN CARSTENSEN R.E. 22323  
COUNTY SURVEYOR

## RECORDER'S CERTIFICATE

FILED THIS 1st DAY OF October, 1979  
AT 4:27 P.M. IN BOOK 32 OF RECORD OF  
SURVEYS AT PAGE 62 AT THE REQUEST OF  
Amador County Surveyor

DOCUMENT NO. 7282 FEE: \$7.00 pd.

Sheldon D. Johnson  
SHELDON JOHNSON  
AMADOR COUNTY RECORDER

By: Marlene Grets  
DEPUTY

SHEET 1 OF 2 SHEETS